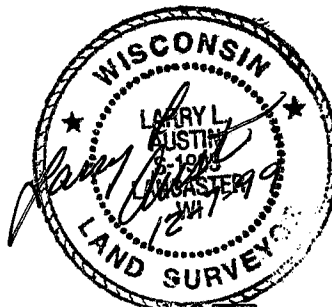
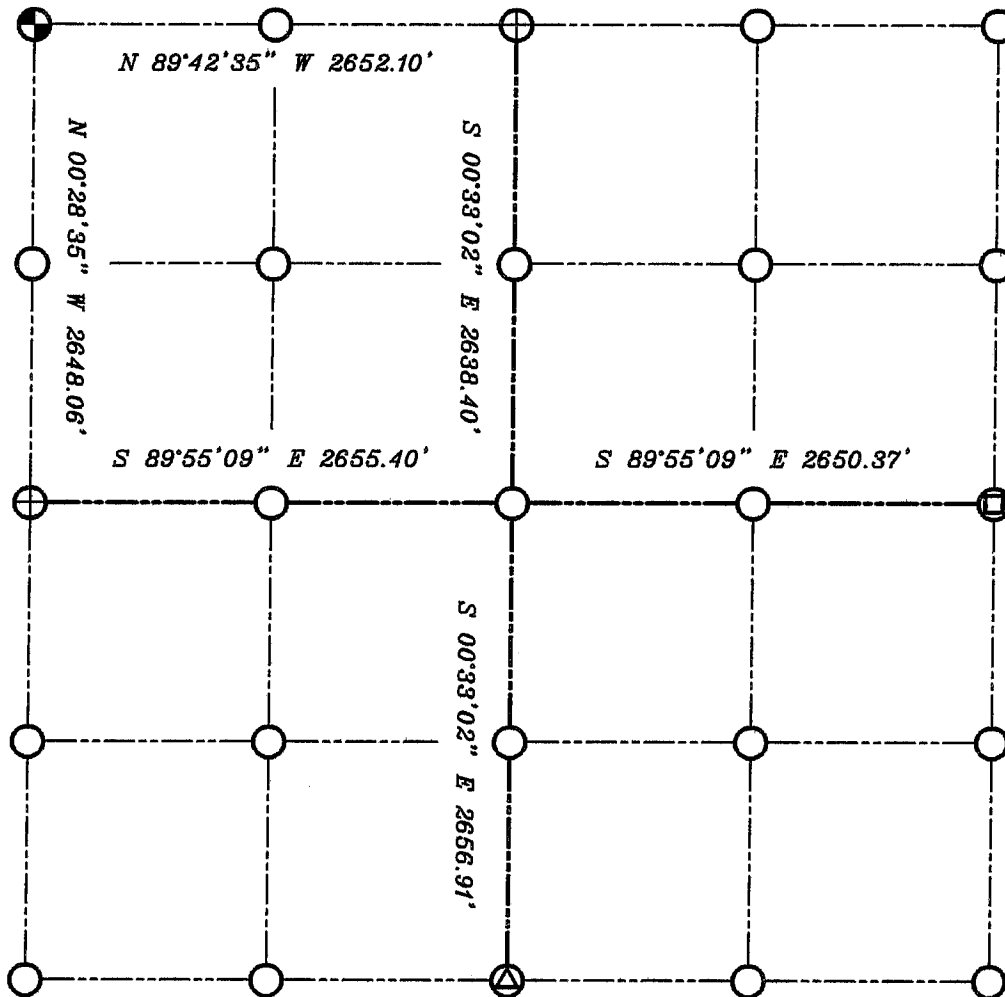






# GRANT COUNTY

## SECTION SUMMARY

$\frac{33}{\text{SECTION}} - \frac{6}{\text{TOWN}} - \frac{4}{\text{RANGE}}$



### LEGEND

-  NO. 8 X 30" REBAR SET WITH GRANT COUNTY ALUMINUM CAP
-  ALUMINUM MONUMENT FOUND
-  3/4" REBAR FOUND
-  RAILROAD SPIKE FOUND

### NOTE:

Relationships of all section corners to other section corners shall be shown hereon by bearing and distance or grid coordinates  
 Show or describe bearing reference



BEARINGS REFERENCED TO THE NORTH LINE OF THE NORTHWEST 1/4 OF SECTION 33, WHICH IS ASSUMED TO BEAR N 89°42'35" W.