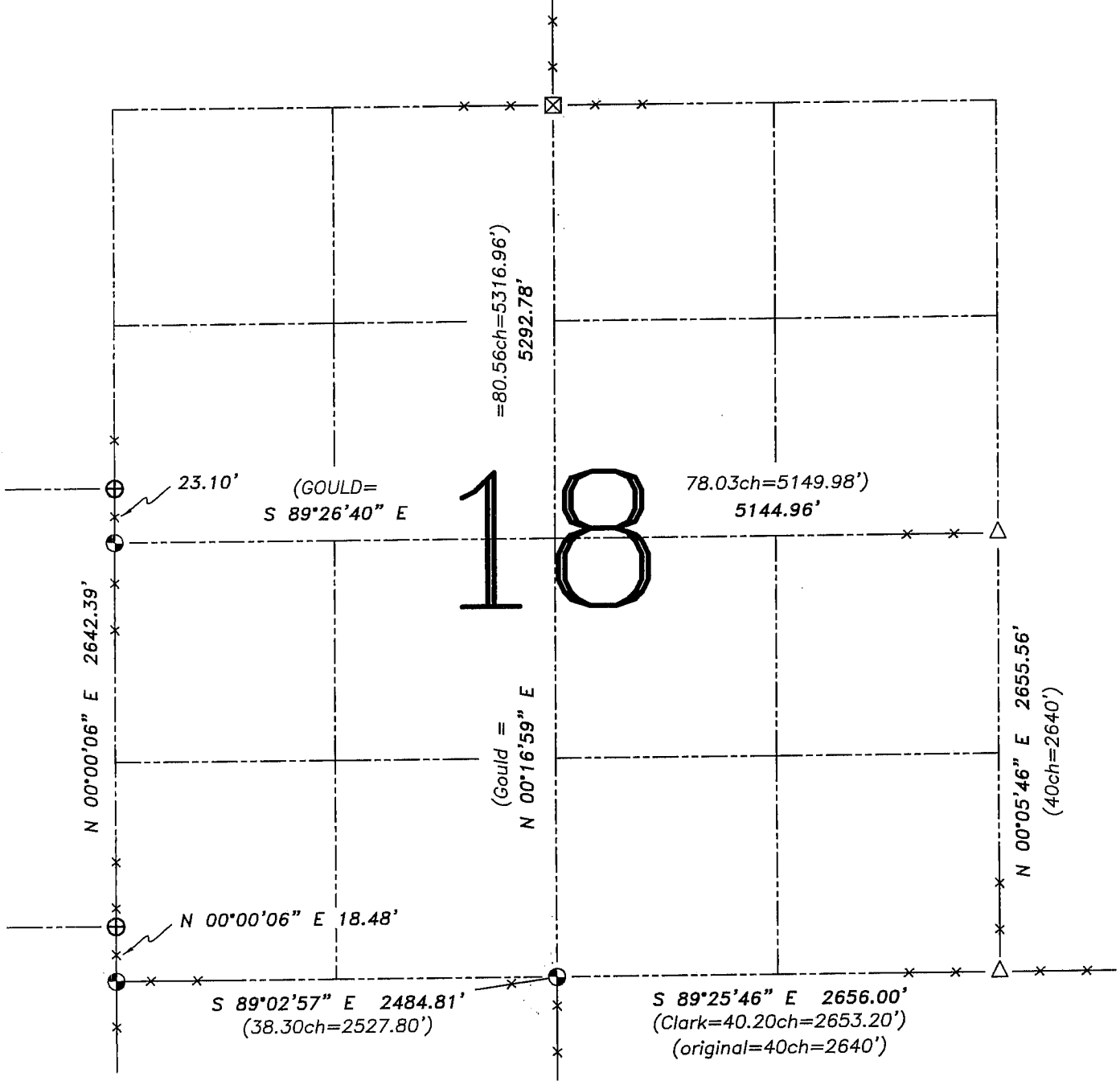


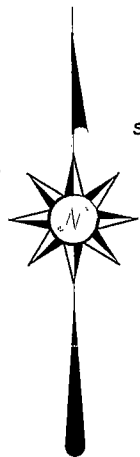
U.S. PUBLIC LAND SURVEY MONUMENT RECORD – GRANT COUNTY, WI

Summary of Section 18, Town 6 North, Range 4 West, Town of Mount Hope



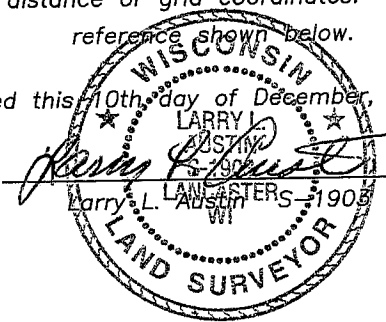
LEGEND

- ⊕ No. 8 rebar found with Grant County Aluminum Cap
- ⊙ No. 8 x 30" rebar set with Grant County Aluminum Cap – wt=2.67#/l.f.
- △ 1" diameter iron pipe found
- ⊠ Stone monument found
- () Recorded as
- *— Approximate location of existing fence



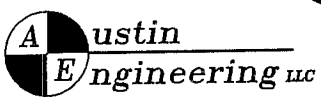
Relationship of all section corners to other section corners shall be shown hereon by bearing and distance or grid coordinates. Bearing reference shown below.

Dated this 10th day of December, 2005



Bearings referenced to the South line of the Southwest Quarter of Section 18, which is assumed to bear S 89°02'57" E.

SKETCH NOT TO SCALE



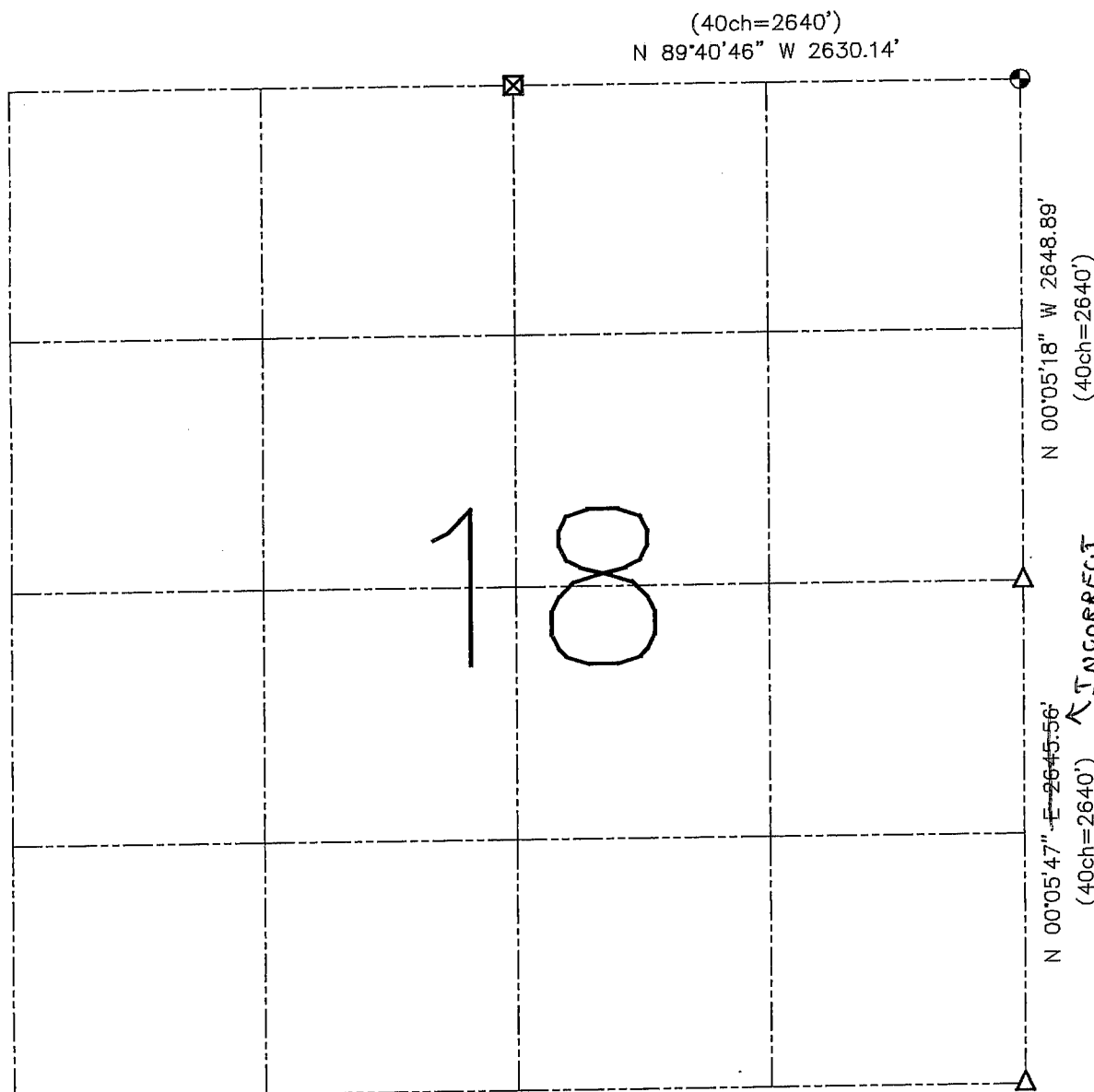
4211 HWY 81 E, LANCASTER, WI 53813
PHONE 608-723-6363 FAX 608-723-6702

JOB NUMBER: 05S207
FIELDBOOK: 2517
G:\T6NR5W\13
H:\TIE\T6NR4W\18ASUM

DRAWN BY: ML DIGMAN
APPROVED: LL AUSTIN

U.S. PUBLIC LAND SURVEY MONUMENT RECORD – GRANT COUNTY, WI

Summary of Section 18, Town 6 North, Range 4 West, Town of Mount Hope

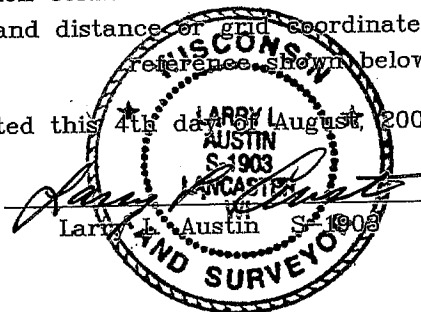


LEGEND

- No. 8 x 30" rebar set with Grant County Aluminum Cap – wt=2.67#/l.f.
- ⊠ Stone monument found
- x— Approximate location of existing fence
- △ 1" diameter iron pipe found

Relationship of all section corners to other section corners shall be shown hereon by bearing and distance or grid coordinates. Bearing reference shown below.

Dated this 4th day of August, 2003



Bearings referenced to the North line of the Northeast Quarter of this Section, which is assumed to bear N 89° 40' 46" W.

SKETCH NOT TO SCALE

AUSTIN ENGINEERING, LLC

4211 HWY 81 EAST, LANCASTER, WI 53813
PHONE 608-723-6363 FAX 608-723-6702

FIELDBOOK: TDSR, 2317
G: \T6NR5W\13
C: \SWA\TIE\T6NR4W\18SUM

CREW: BS-SB-SA-BD
DRAWN BY: SW AUSTIN
APPROVED: LL AUSTIN