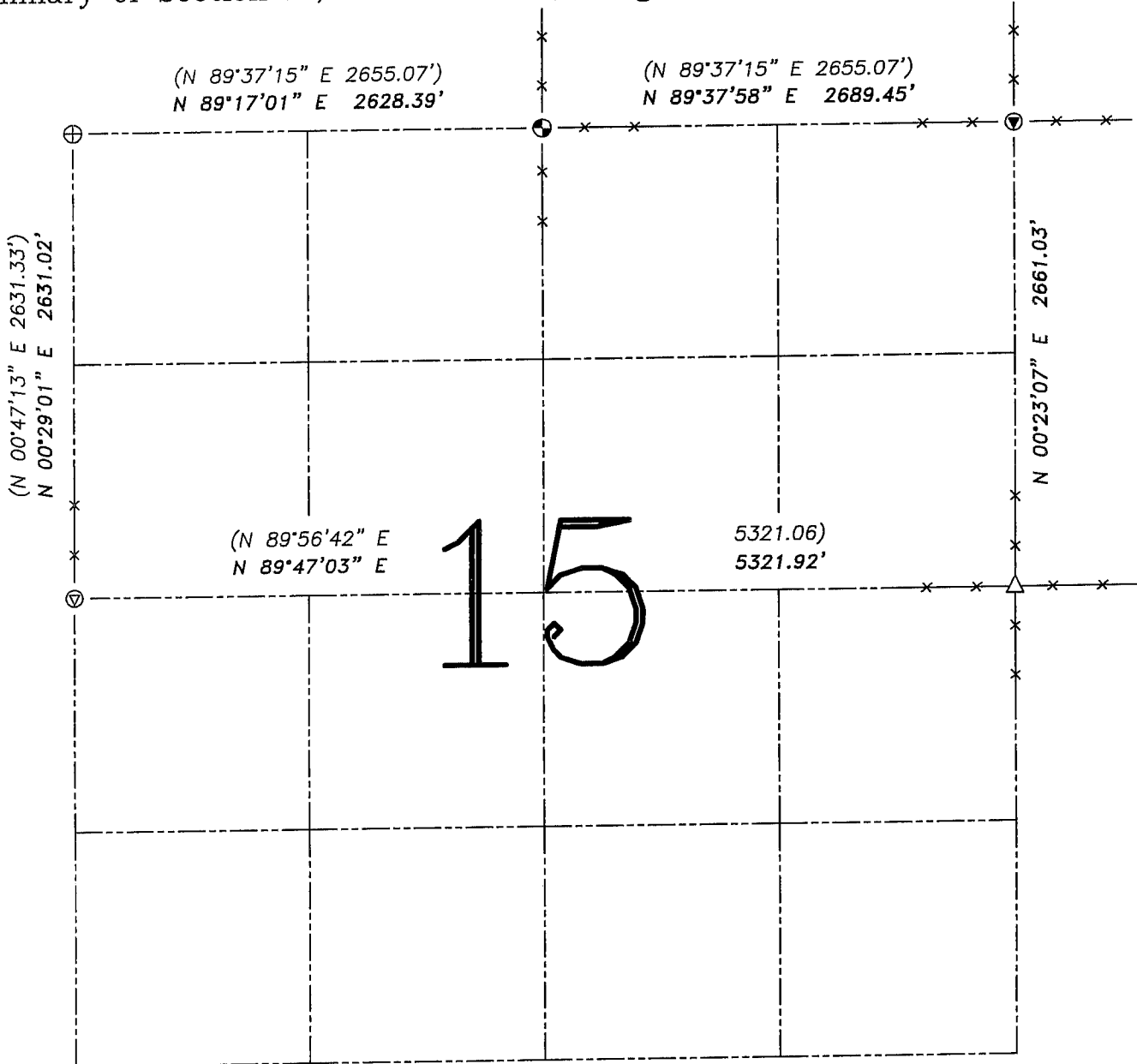


U.S. PUBLIC LAND SURVEY MONUMENT RECORD – GRANT COUNTY, WI

Summary of Section 15, Town 6 North, Range 4 West, Town of Mount Hope



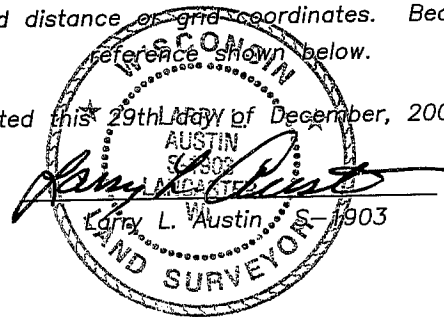
LEGEND

- ⊕ No. 8 rebar found with Grant County Aluminum Cap
- ⊙ No. 8 x 30" rebar set with Grant County Aluminum Cap – wt=2.67#/l.f.
- △ 1" diameter iron pipe found
- ⊖ Railroad spike found
- ⊙ Railroad spike set
- () Recorded as
- x— Approximate location of existing fence



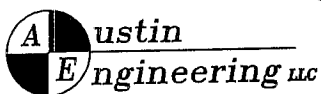
Relationship of all section corners to other section corners shall be shown hereon by bearing and distance or grid coordinates. Bearing reference shown below.

Dated this 29th day of December, 2005



Bearings referenced to the West line of the NW 1/4 Section 15, which is assumed to bear N 00°29'01" E.

SKETCH NOT TO SCALE



4211 HWY 81 E, LANCASTER, WI 53813
 PHONE 608-723-6363 FAX 608-723-6702

JOB NUMBER: 05S298
 FIELDBOOK: TDSR, 2516
 G:\T7NR4W\133
 H:\TIE\T6NR4W\15SUM

DRAWN BY: ML DIGMAN
 APPROVED: LL AUSTIN