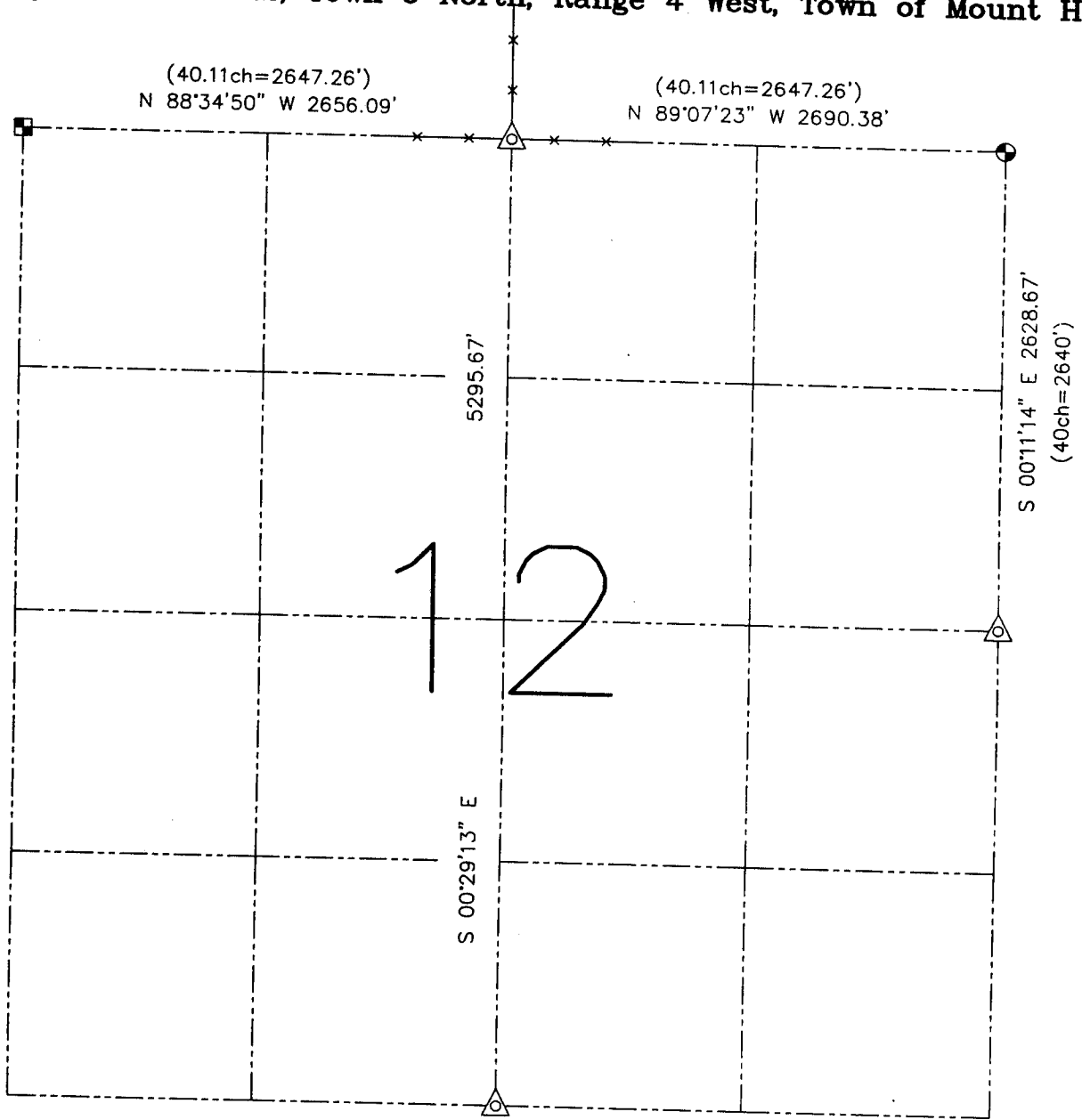


U.S. PUBLIC LAND SURVEY MONUMENT RECORD – GRANT COUNTY, WI
Summary of Section 12, Town 6 North, Range 4 West, Town of Mount Hope



LEGEND

- ⊙ No. 8 x 30" rebar set with Grant County Aluminum Cap – wt=2.67#/l.f.
- ⊠ Aluminum Monument found with Grant County Aluminum Cap
- △ 1 1/2" diameter iron pipe found
- () Recorded as
- *— Approximate location of existing fence

Relationship of all section corners to other section corners shall be shown hereon by bearing and distance or grid coordinates. Bearing reference shown below

Dated this 1st day of November 2002

Larry L. Austin
 Larry L. Austin



Bearings referenced to the North line of the Northeast Quarter of this Section, which is assumed to bear N 89°07'23" W

SKETCH NOT TO SCALE

AUSTIN ENGINEERING, LLC

4211 HWY 81 EAST, LANCASTER, WI 53813
 PHONE 608-723-6363 FAX 608-723-6702

FIELDBOOK: SDR33, 2209

G: \T6NR2W\12

C: \SWA\TIE\T6NR2W\12SUM

JOB # 02S284

DRAWN BY: SW AUSTIN

APPROVED: LL AUSTIN