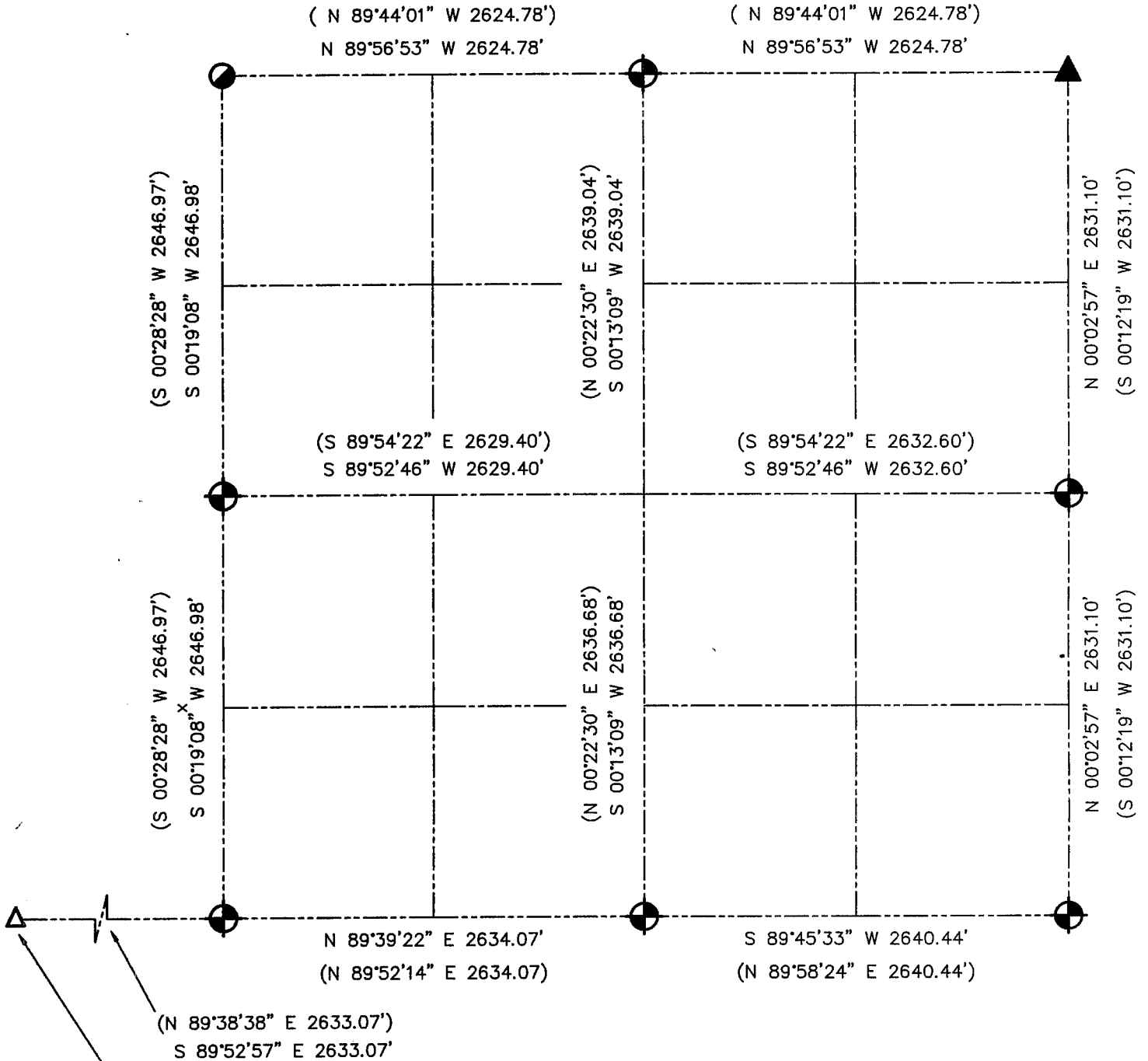





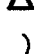
U.S. PUBLIC LAND SURVEY MONUMENT RECORD - GRANT COUNTY, WI

Summary of Section 09, Town 6 North Range 4 West, Town of Mount Hope



SOUTH 1/4 SECTION 8

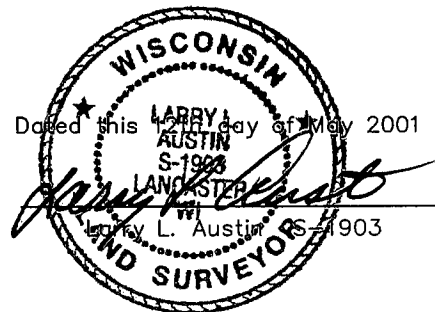
LEGEND

-  NUMBER 8 x 30" REBAR SET WITH GRANT COUNTY ALUMINUM CAP
-  ANGLE IRON POST FOUND IN CONCRETE
-  2" IRON PIPE FOUND (1.5" I.D.)
-  1" IRON PIPE FOUND
- () RECORDED AS

Bearings referenced to the South line of Southwest 1/4 of Section 9, which is assumed to bear S 89°39'22" W.



Relationship of all section corners to other section corners shall be shown hereon by bearing and distance or grid coordinates. Bearing reference shown below.



SKETCH NOT TO SCALE

AUSTIN ENGINEERING, LLC

4211 HWY 81 EAST, LANCASTER, WI 53813
PHONE 608-723-6363 FAX 608-723-6702

FIELDBOOK: SDR33, 2007, 2009
G:\T6NR4W\09 & G:\T7NR4W\133
C:\SWA\TIE\T6NR4W\09SUM

CREW: BS-SB-SA-TF
DRAWN BY: SW AUSTIN
APPROVED: LL AUSTIN