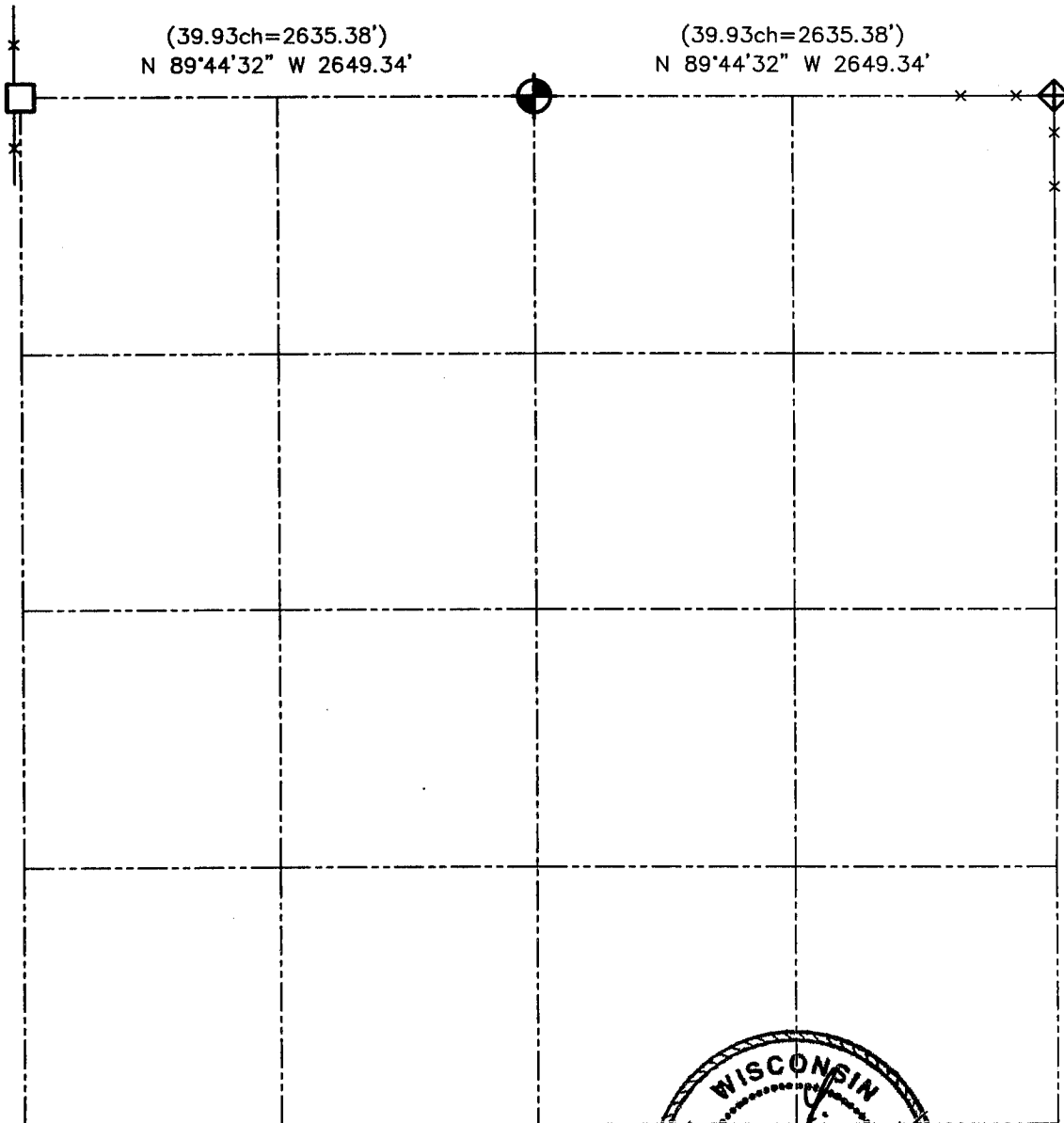






U.S. PUBLIC LAND SURVEY MONUMENT RECORD - GRANT COUNTY, WI

Summary of Section 8, Town 6 North Range 4 West, Town of Mount Hope



LEGEND

-  NUMBER 8 x 30" REBAR SET WITH GRANT COUNTY ALUMINUM CAP
-  ANGLE IRON CORNER POST IN CONCRETE FOUND
-  NUMBER 10 IRON BAR FOUND
-  () RECORDED AS



Relationship of all section corners to other section corners shall be shown hereon by bearing and distance or grid coordinates. Bearing reference shown below.

Dated this 15th day of June, 2001

Larry L. Austin
Larry L. Austin S-1903

Bearings referenced to the North line of the Northeast 1/4 of Section 8, which is assumed to bear N 89°44'32" W.

SKETCH NOT TO SCALE

AUSTIN ENGINEERING, LLC

4211 HWY 81 EAST, LANCASTER, WI 53813
PHONE 608-723-6363 FAX 608-723-6702

FIELDBOOK: SDR33, 9801

G: \T7NR4W\32A

C: \SWA\TIE\T6NR4W\08SUM

CREW: BS-SB-SA-TF

DRAWN BY: SW AUSTIN

APPROVED: LL AUSTIN