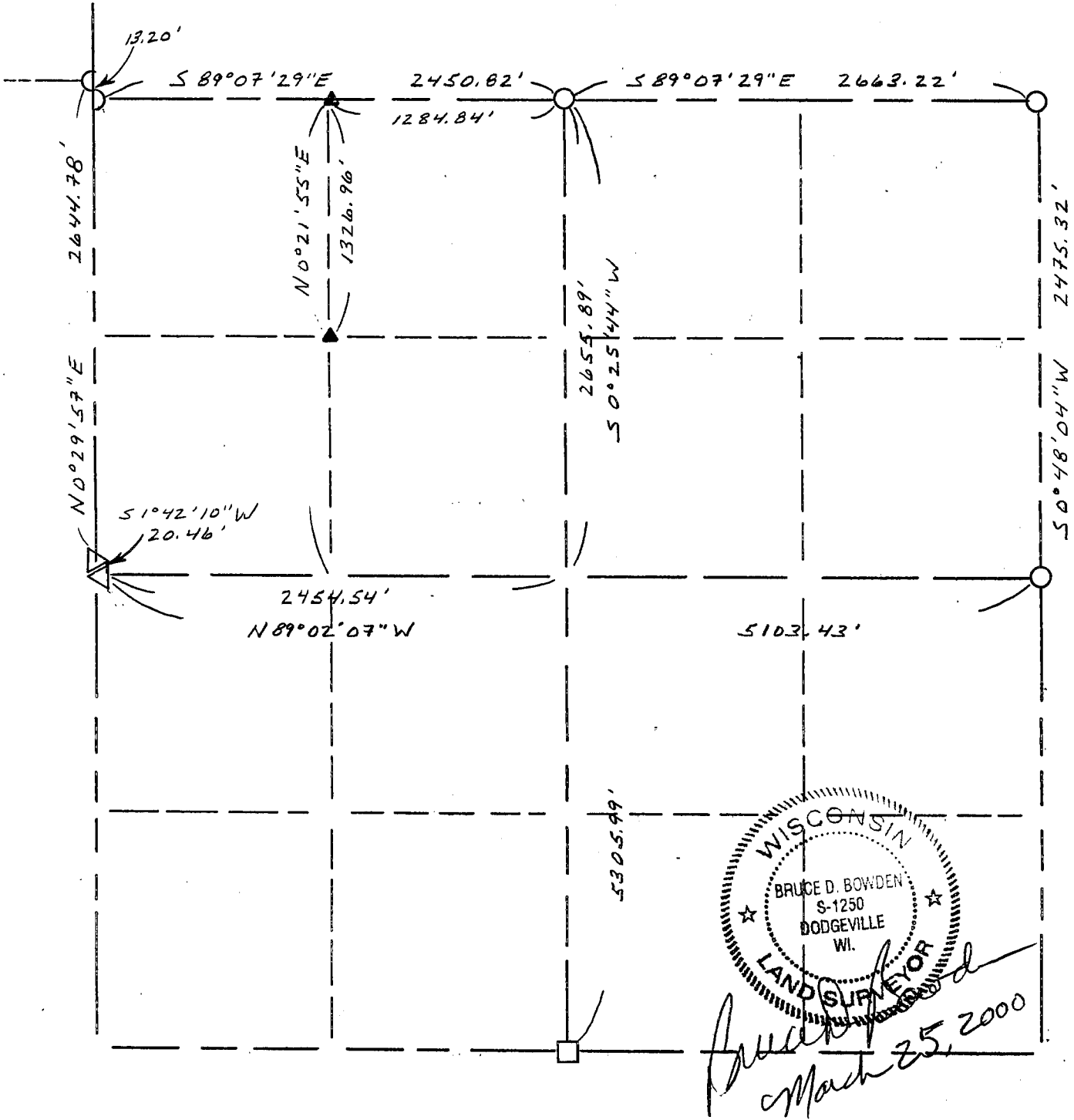


GRANT COUNTY

Section Summary

$\frac{7}{SECTION} - \frac{6N}{TOWN} - \frac{4W}{RANGE}$



LEGEND

- △ COUNTY MONUMENT
- STONE OR CONCRETE MONUMENT
- OTHER (specify) 1/4" x 30" REBAR
- ▲ #6 (3/4" dia.) REBAR

NOTE:

Relationships of all section corners to other section corners shall be shown hereon by bearing and distance or grid coordinates

Show or describe bearing reference -
 GRANT COUNTY COORDINATE SYSTEM
 AS DEFINED BY WISC. DEPT. OF TRANS.
 AND DETERMINED BY GPS OBSERVATIONS.