

64132

# U.S. PUBLIC LAND SURVEY MONUMENT RECORD - GRANT COUNTY, WI

Section 31, Town 6 North Range 4 West, Town of Mount Hope (a)

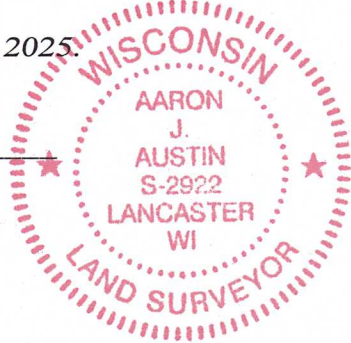
NOTE: This form is intended and designed to fulfill all requirements of the Wisconsin Administrative Code Chapter A-E 7.08, U.S. Public Land Survey Monument Record (3) (a) (b) (c) (d) (e) (f) (g) (h) (i).

### CERTIFICATE: (i)

I, Aaron J. Austin, Wisconsin Professional Land Surveyor, do hereby certify that the corner location on this record was determined by me and/or under my direct supervision and that this U.S. Public Land Survey Monument Record is correct and complete to the best of my knowledge and belief.

Dated this 5th day of September, 2025.

*Aaron J. Austin*  
Aaron J. Austin, PLS-2922



Grant County Coordinates:  
NAD 83 (2011)  
Northing: 559,096.75  
Easting: 770,000.35

### HISTORY OF CORNER ESTABLISHMENT:

Original corner was set in 1832 by Sibley.  
Overton tied to the corner on a Survey Filed in Book B Page 284 dated 10-17-1857.

### DESCRIPTION OF CORNER EVIDENCE FOUND: (b) (f) (g) (h)

I set a 1" x 24" Rebar at an occupied fence corner. The fence corner matched well to the occupied Center of Section 31 in refrence to Overtons survey. I set four witness corners and verified the Monument's location with G.P.S. and E.D.M. methods.

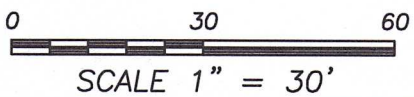
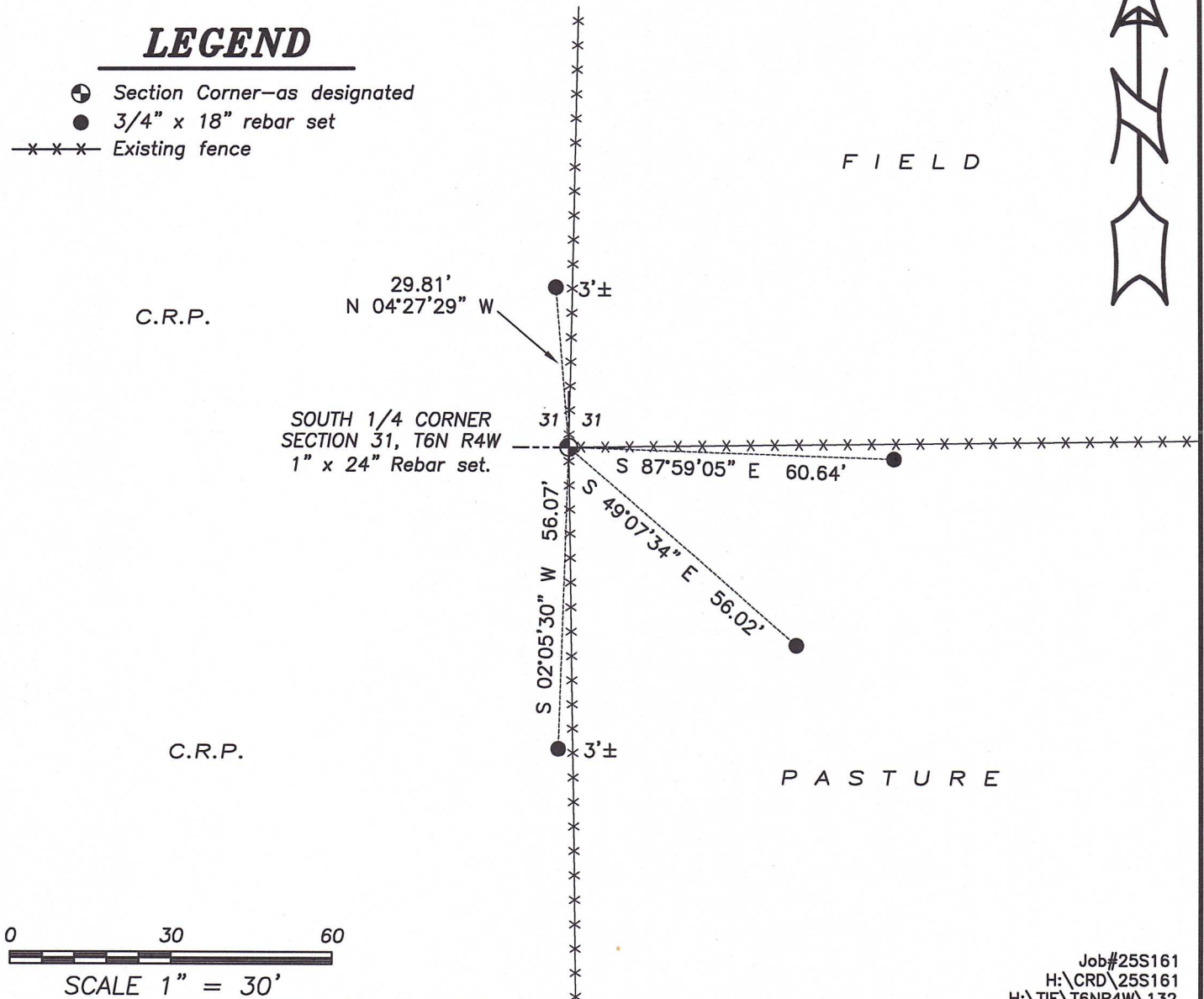
### DESCRIPTION OF CORNER AND WITNESS MONUMENTS, references and accessories used to perpetuate the original or re-established location of this corner. (c) (d) (e)

Witnesses to corner location Shane Austin, Owen Austin.  
Drawn by: Owen Austin.

SKETCH:

## LEGEND

- ⊕ Section Corner—as designated
- 3/4" x 18" rebar set
- x-x-x- Existing fence



Job#25S161  
H:\CRD\25S161  
H:\TIE\T6NR4W\132