

U.S. PUBLIC LAND SURVEY MONUMENT RECORD - GRANT COUNTY, WI

Section 33, Town 6 North Range 4 West, Town of Mount Hope (a)

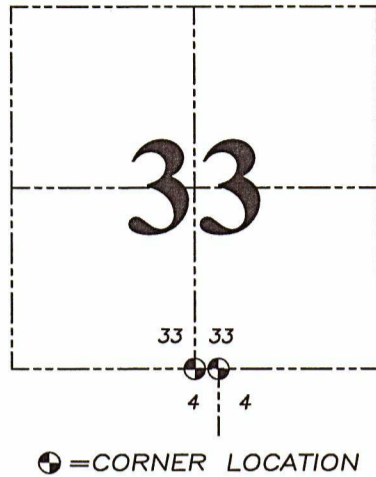
NOTE: This form is intended and designed to fulfill all requirements of the Wisconsin Administrative Code Chapter A-E 7.08, U.S. Public Land Survey Monument Record (3) (a) (b) (c) (d) (e) (f) (g) (h) (i).

CERTIFICATE: (i)

I, Aaron J. Austin, Wisconsin Professional Land Surveyor, do hereby certify that the corner location on this record was determined by me and/or under my direct supervision and that this U.S. Public Land Survey Monument Record is correct and complete to the best of my knowledge and belief.

Dated this 20th day of October, 2022.

Aaron J. Austin
Aaron J. Austin, S-2922



Grant County Coordinates:
NAD 83 (2011)
Northing: 559,045.61
Easting: 780,595.85

HISTORY OF CORNER ESTABLISHMENT:

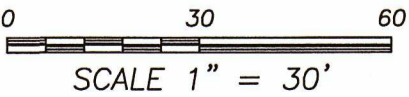
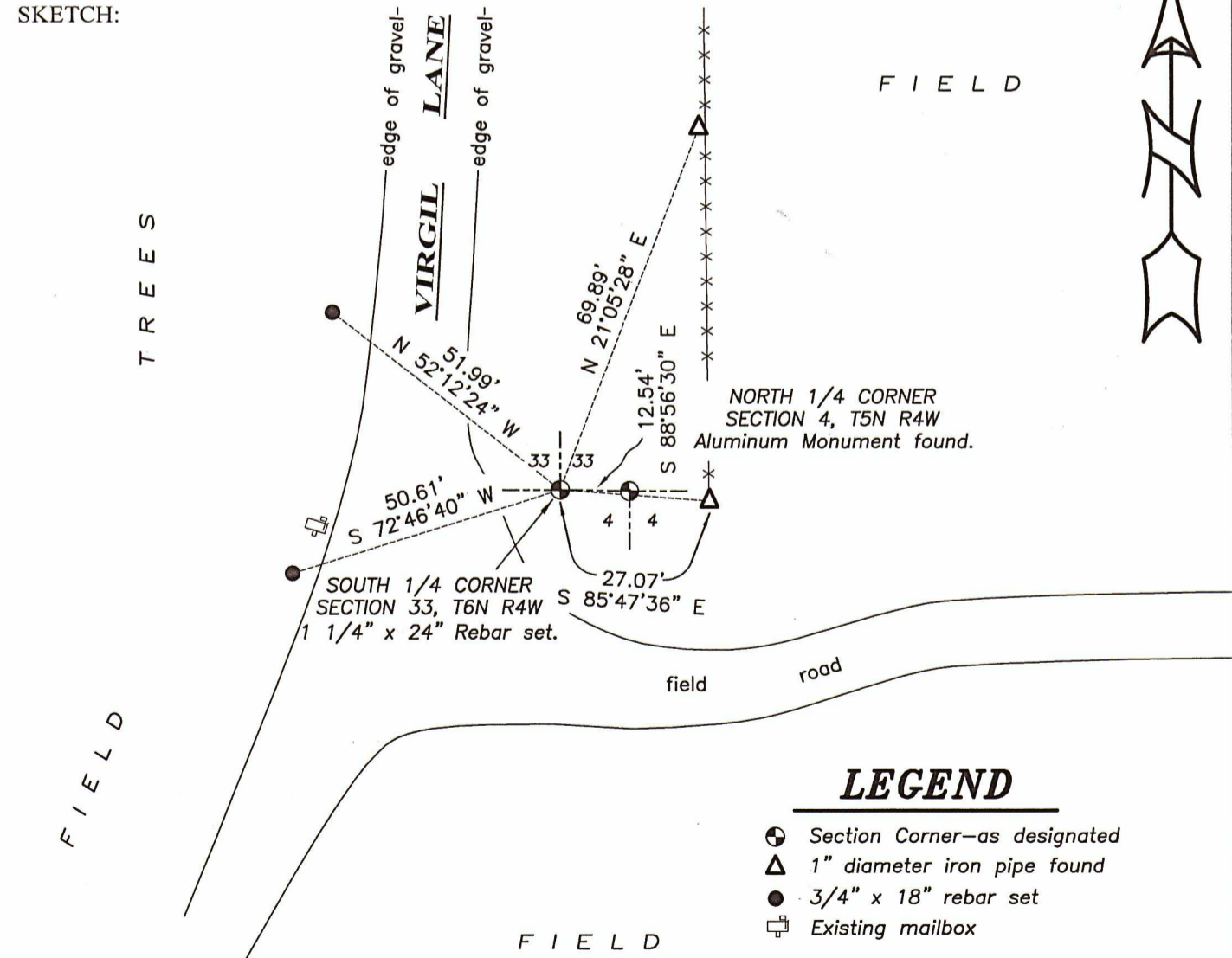
Original corner was set in 1832 by Sibley.
Larry Austin set a Railroad Spike and prepared a Survey Monument Record dated 7/15/1995.

DESCRIPTION OF CORNER EVIDENCE FOUND: (b) (f) (g) (h)

I set a 1 1/4" x 24" Rebar from the existing two witness corners Larry set. I set two additional witness corners after I verified the Monument's location with G.P.S. and E.D.M. methods.

DESCRIPTION OF CORNER AND WITNESS MONUMENTS, references and accessories used to perpetuate the original or re-established location of this corner: (c) (d) (e)

Witnesses to corner location Shane Austin, Owen Austin, Tanner Austin.
Drawn by: Owen Austin
SKETCH:

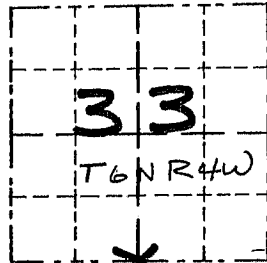


GRANT COUNTY

Survey Monument Record

TYPE OF MONUMENT RAILROAD SPIKE SET
 STATE PLANE COORDINATES: N _____
 E _____
 ELEVATION — M.S.L. DATUM: _____
 THETA ANGLE: _____
 FIELD BOOK: 95-03
 PAGE: 19

CORNER NO. 128
 SECTION 33
 TOWN 6N
 RANGE 4W



LOCATION
 (Indicated by "X")

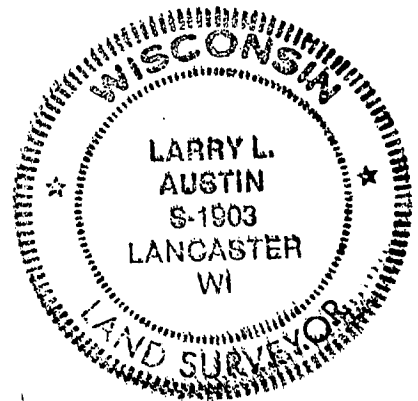
BASIS FOR MONUMENT LOCATION

(Use reverse side if necessary)

Show info such as: History of corner, with reference to Vol. and pg., dates, surveyor; exact description of monument replaced; if location computed, by taped or EDM traverse; landowner, remarks, etc.

CORNER WAS SET AT
 OCCUPATION AND
 VERIFIED BY EDM.
 TRAVERSE OF THE
 AREA.

SEAL:



CERTIFIED CORRECT

Larry L. Austin
 Registered Land Surveyor

DATE: 7/15/95

TIE SKETCH

Show at least three (3) ties and monument

LEGEND

- ▲ RAILROAD SPIKE SET
- ⊕ ALUM. MON.
- 1"X12" IRON PIPES SET
- xx EXISTING FENCE

