

64127

**U.S. PUBLIC LAND SURVEY MONUMENT RECORD - GRANT COUNTY, WI**

Section 34, Town 6 North Range 4 West, Town of Mount Hope (a)

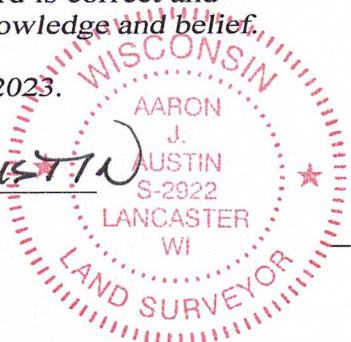
NOTE: This form is intended and designed to fulfill all requirements of the Wisconsin Administrative Code Chapter A-E 7.08, U.S. Public Land Survey Monument Record (3) (a) (b) (c) (d) (e) (f) (g) (h) (i).

**CERTIFICATE: (i)**

I, Aaron J. Austin, Wisconsin Professional Land Surveyor, do hereby certify that the corner location on this record was determined by me and/or under my direct supervision and that this U.S. Public Land Survey Monument Record is correct and complete to the best of my knowledge and belief.

Dated this 20th day of April, 2023.

*Aaron J. Austin*  
 Aaron J. Austin, S-2922



⊙ = CORNER LOCATION

Grant County Coordinates:  
 NAD 83 (2011)  
 Northing: 559,048.14  
 Easting: 783,254.83

**HISTORY OF CORNER ESTABLISHMENT:**

Original corner was set in 1832 by Sibley.  
 Larry Austin set a Grant County Aluminum Monument and prepared a Survey Monument Record dated 7-15-1995.

**DESCRIPTION OF CORNER EVIDENCE FOUND: (b) (f) (g) (h)**

I found the Aluminum Monument and four witness corners Larry set. I verified the Monument's location with G.P.S. and E.D.M. methods.

**DESCRIPTION OF CORNER AND WITNESS MONUMENTS, references and accessories used to perpetuate the original or re-established location of this corner. (c) (d) (e)**

Witnesses to corner location Owen Austin, Tanner Austin.  
 Drawn by: Owen Austin.

SKETCH:

**LEGEND**

- ⊙ Section Corner—as designated
- △ 1" diameter iron pipe found
- x-x-x- Existing fence
- ( ) Recorded as



LINE	BEARING	DISTANCE	RECORDED
B-A	S 89°42'47" E	13.20'	20 LINKS
B-C	N 87°04'07" W	13.56'	13.56'
B-D	N 89°17'20" W	31.05'	31.37'

P A S T U R E

SOUTHWEST CORNER  
 SECTION 34, T6N R4W  
 Aluminum Monument found.

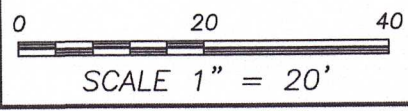
(75.75')  
 N 87°00'22" E 75.65'

NORTHWEST CORNER  
 SECTION 3, T5N R4W  
 2" Iron pipe reset.

S 38°23'30" E  
 12.99'  
 (12.89')

W O O D S

P A S T U R E



# GRANT COUNTY

## Survey Monument Record

TYPE OF MONUMENT GRANT COUNTY Alum. Mon.

STATE PLANE COORDINATES: N \_\_\_\_\_  
E \_\_\_\_\_

ELEVATION — M.S.L. DATUM: \_\_\_\_\_

THETA ANGLE: \_\_\_\_\_

FIELD BOOK: 95-03

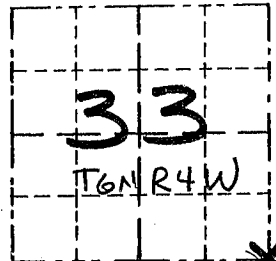
PAGE (18)

CORNER NO. 127

SECTION 33

TOWN 6N

RANGE 4W



LOCATION  
(Indicated by "X")

### BASIS FOR MONUMENT LOCATION

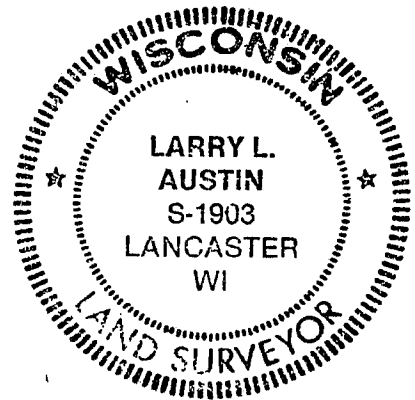
(Use reverse side if necessary)

Show info such as: History of corner, with reference to Vol. and pg., dates, surveyor; exact description of monument replaced; if location computed, by taped or EDM traverse; landowner, remarks, etc.

ORIGINAL CORNER SET  
IN 1832 BY SIBLEY

CORNER WAS RESET USING  
EAST-WEST FENCE FOR  
NORTH-SOUTH LOCATION, AND  
AT RECORDED DISTANCE  
WEST OF FENCE TO THE  
SOUTH AND VERIFIED BY  
EDM TRAVERSE OF  
THE AREA

SEAL:



CERTIFIED CORRECT

Registered Land Surveyor

DATE: 2/15/95

### TIE SKETCH

Show at least three (3) ties and monument

#### LEGEND

- GRANT COUNTY Alum. Mon.
- 1" x 12" IRON PIPE SET
- EXISTING FENCE

