

04122

# U.S. PUBLIC LAND SURVEY MONUMENT RECORD - GRANT COUNTY, WI

Section 36, Town 6 North Range 4 West, Town of Mount Hope (a)

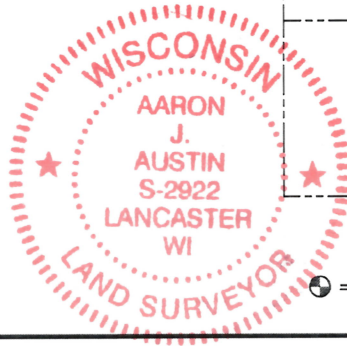
NOTE: This form is intended and designed to fulfill all requirements of the Wisconsin Administrative Code Chapter A-E 7.08, U.S. Public Land Survey Monument Record (3) (a) (b) (c) (d) (e) (f) (g) (h) (i).

**CERTIFICATE:** (i)

I, Aaron J. Austin, Wisconsin Professional Land Surveyor, do hereby certify that the corner location on this record was determined by me and/or under my direct supervision and that this U.S. Public Land Survey Monument Record is correct and complete to the best of my knowledge and belief.

Dated this 3rd day of June, 2024.

*Aaron J. Austin*  
Aaron J. Austin, S-2922



Grant County Coordinates:  
NAD 83 (2011)  
Northing: 559,016.38  
Easting: 796,499.90

**HISTORY OF CORNER ESTABLISHMENT:**

Original corner was set in 1832 by Sibley.  
Larry Austin set a 1" Rebar with a Grant County Aluminum Cap and prepared a Survey Monument Record dated 3-21-2003.

**DESCRIPTION OF CORNER EVIDENCE FOUND:** (b) (f) (g) (h)

I found the Aluminum Capped Rebar and three witness corners Larry set. I set one additional witness corner after I verified the Monument's location with G.P.S. and E.D.M. methods.

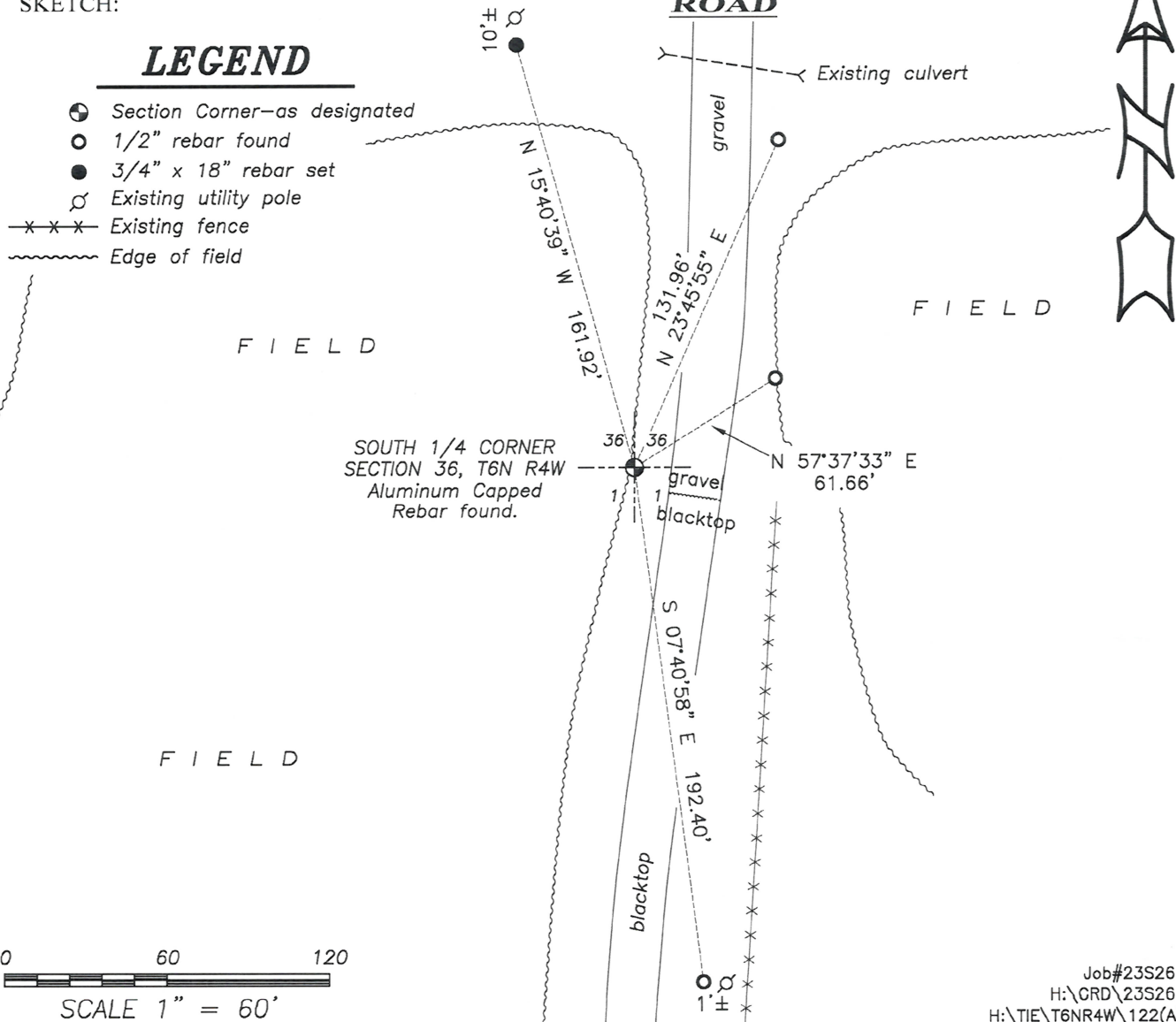
**DESCRIPTION OF CORNER AND WITNESS MONUMENTS,** references and accessories used to perpetuate the original or re-established location of this corner. (c) (d) (e)  
Witnesses to corner location Owen Austin, Tanner Austin.  
Drawn by: Owen Austin.

SKETCH:

## LEGEND

- Section Corner-as designated
- 1/2" rebar found
- 3/4" x 18" rebar set
- Existing utility pole
- Existing fence
- Edge of field

## SHADY DELL ROAD



**U.S. PUBLIC LAND SURVEY MONUMENT RECORD – GRANT COUNTY, WI**

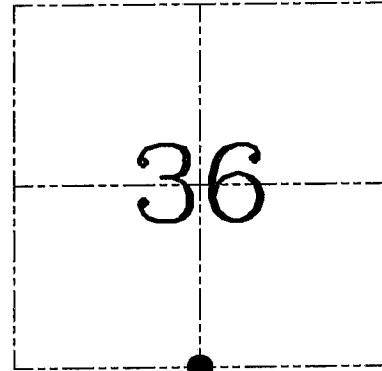
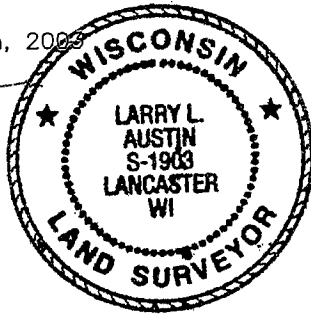
**Section 36, Town 6 North Range 4 West, Town of Mount Hope**

**CERTIFICATE**

I, Larry L. Austin, do hereby certify that the corner location on this record was determined by me and/or under my direct supervision and that this U.S. public land survey monument record is correct and complete to the best of my knowledge and belief.

Dated this 21st day of March, 2009

*Larry L. Austin*  
Larry L. Austin S-1903



● = CORNER LOCATION

**HISTORY OF CORNER ESTABLISHMENT**

Corner was originally set in 1832 by Sibley.  
No other record of the corner was found.

**DESCRIPTION OF CORNER EVIDENCE FOUND**

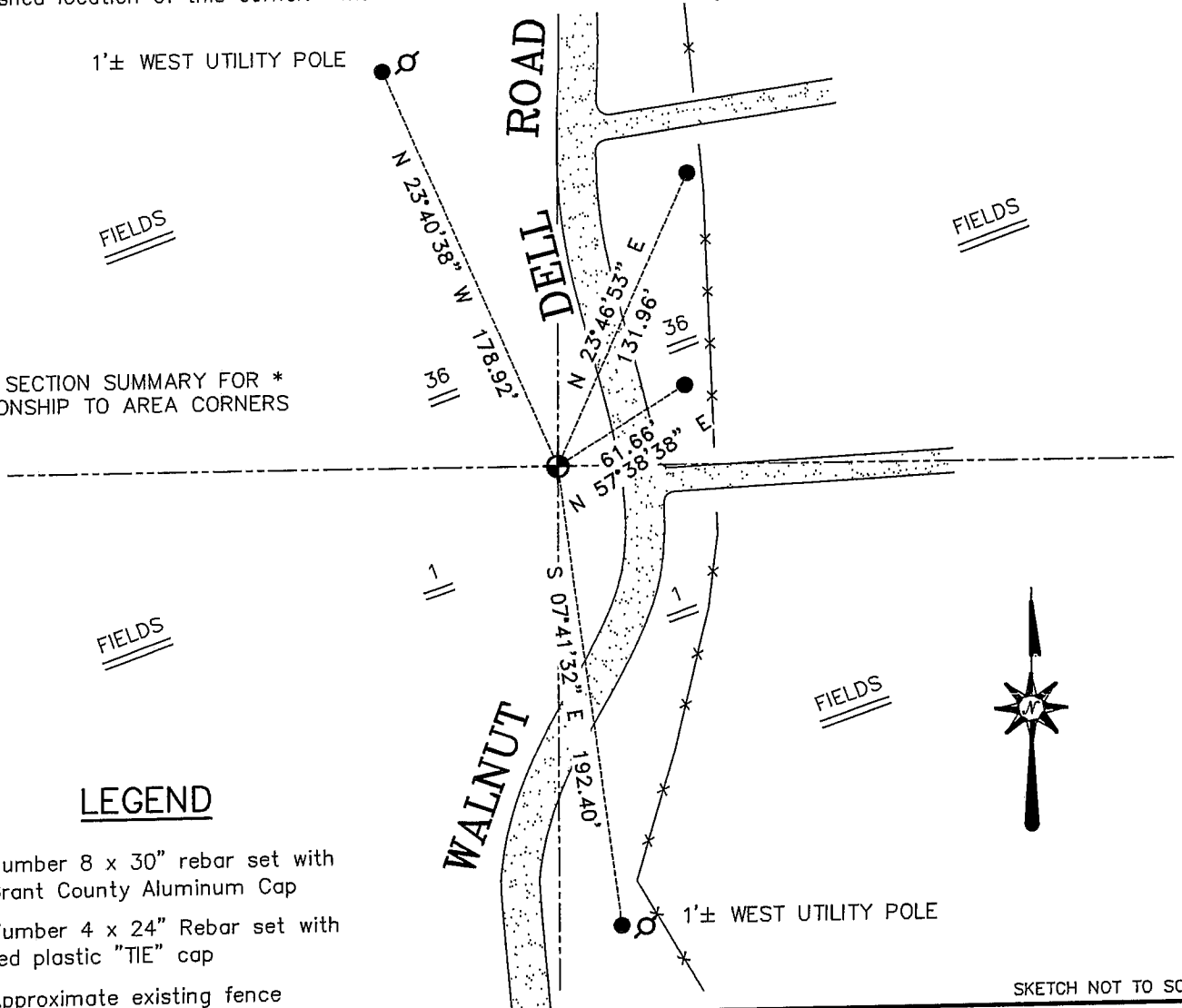
I reset the corner proportionately between the Southwest and Southeast corners of Section 36. Verified this location using EDM & GPS methods.

**DESCRIPTION OF CORNER AND WITNESS MONUMENTS**, references and accessories used to perpetuate the original or re-established location of this corner. Witnesses to corner location Bobby Sedgwick & Shelby Blindert & Brad Digman

**SKETCH:**

1'± WEST UTILITY POLE

\* SEE SECTION SUMMARY FOR \*  
RELATIONSHIP TO AREA CORNERS



**LEGEND**

- Number 8 x 30" rebar set with Grant County Aluminum Cap
- Number 4 x 24" Rebar set with red plastic "TIE" cap
- X— Approximate existing fence

SKETCH NOT TO SCALE

**AUSTIN ENGINEERING, LLC**

4211 HWY 81 EAST, LANCASTER, WI 53813  
PHONE 608-723-6363 FAX 608-723-6702

FIELDBOOK: SDR33, 23-01  
G: \T5NR4W\02  
C: \SWA\TIE\T6NR4W\122  
JOB NUMBER 03S013

DRAWN BY: SW AUSTIN  
APPROVED: LL AUSTIN

**CORNER NUMBER 122**