

64117

U.S. PUBLIC LAND SURVEY MONUMENT RECORD - GRANT COUNTY, WI

Section 33, Town 6 North Range 4 West, Town of Mount Hope (a)

NOTE: This form is intended and designed to fulfill all requirements of the Wisconsin Administrative Code Chapter A-E 7.08, U.S. Public Land Survey Monument Record (3) (a) (b) (c) (d) (e) (f) (g) (h) (i).

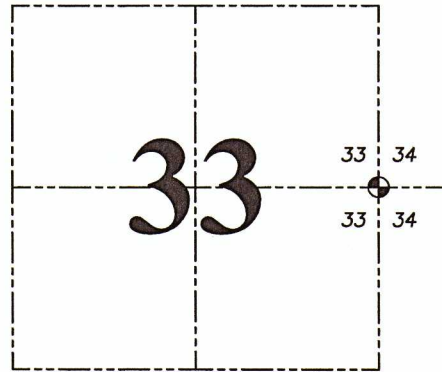
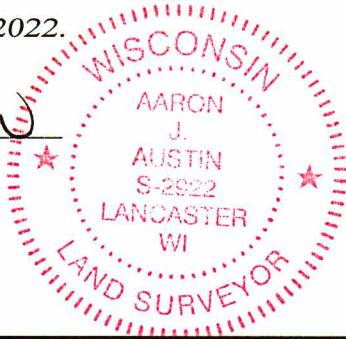
CERTIFICATE: (i)

I, Aaron J. Austin, Wisconsin Professional Land Surveyor, do hereby certify that the corner location on this record was determined by me and/or under my direct supervision and that this U.S. Public Land Survey Monument Record is correct and complete to the best of my knowledge and belief.

Dated this 20th day of October, 2022.

Aaron J. Austin

Aaron J. Austin, S-2922



⊕ = CORNER LOCATION

Grant County Coordinates:
NAD 83 (2011)
Northing: 561,690.05
Easting: 783,229.98

HISTORY OF CORNER ESTABLISHMENT:

Original corner was set in 1833 by Harvey Parke.
Larry Austin set a 3/4" Rebar and prepared a Survey Monument Record dated 7/15/1995.

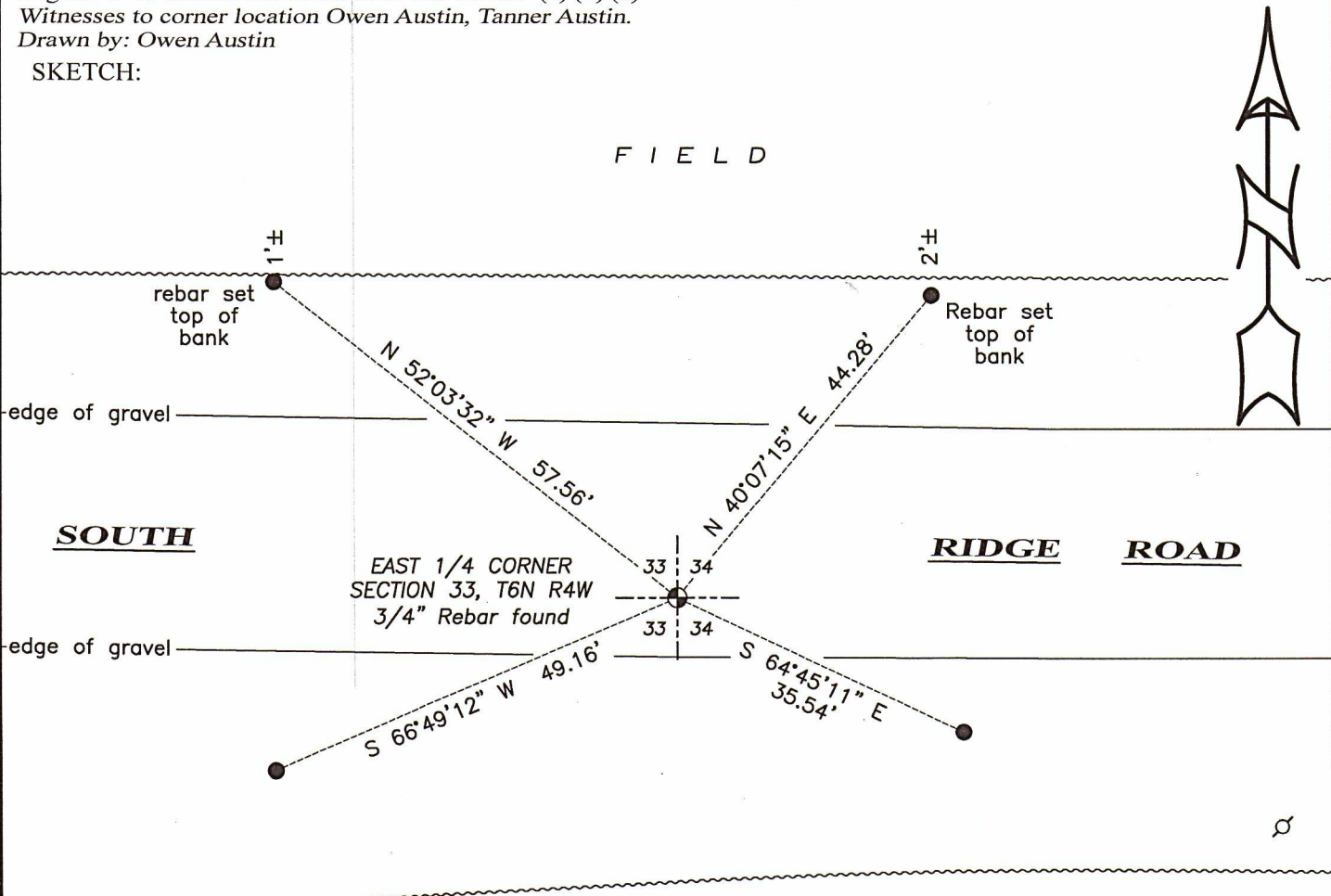
DESCRIPTION OF CORNER EVIDENCE FOUND: (b) (f) (g) (h)

I found the 3/4" Rebar Larry set. I set four witness corners after I verified the Monument's location with G.P.S. and E.D.M. methods.

DESCRIPTION OF CORNER AND WITNESS MONUMENTS, references and accessories used to perpetuate the original or re-established location of this corner. (c) (d) (e)

Witnesses to corner location Owen Austin, Tanner Austin.
Drawn by: Owen Austin

SKETCH:

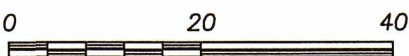


LEGEND

- ⊕ Section Corner—as designated
- 5/8" x 18" rebar set
- ⊘ Existing utility pole
- ~~~~~ Edge of field

FIELD

FIELD



SCALE 1" = 20'

GRANT COUNTY

Survey Monument Record

TYPE OF MONUMENT 3/4" X 24" IRON ROD SET

STATE PLANE COORDINATES: N _____
E _____

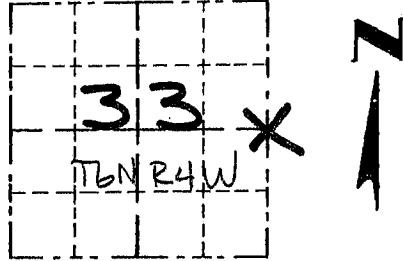
ELEVATION — M.S.L. DATUM: _____

THETA ANGLE: _____

FIELD BOOK: 95-03

PAGE (19)

CORNER NO. 117
SECTION 33
TOWN 6N
RANGE 4W
E 1/4 COR.



LOCATION
(Indicated by "X")

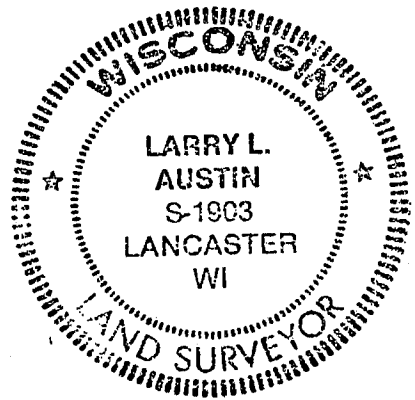
BASIS FOR MONUMENT LOCATION

(Use reverse side if necessary)

Show info such as: History of corner, with reference to Vol. and pg., dates, surveyor; exact description of monument replaced; if location computed, by taped or EDM traverse; landowner, remarks, etc.

SEAL:

ORIGINAL CORNER SET
IN 1833 BY HARVEY
PARKE



CORNER WAS RESET ON-
LINE AND MIDWAY BETWEEN
THE NORTHEAST CORNER AND
THE SOUTH EAST CORNER OF
SECTION, AND VERIFIED BY
EDM TRAVERSE OF THE AREA

CERTIFIED CORRECT

Larry L. Austin
Registered Land Surveyor

DATE: 7/15/95

TIE SKETCH

Show at least three (3) ties and monument

