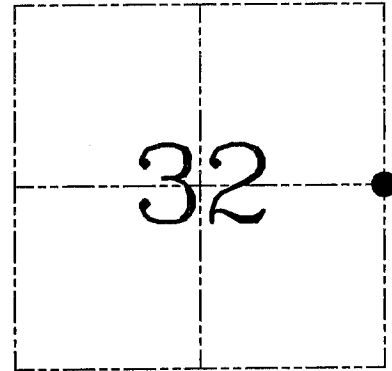
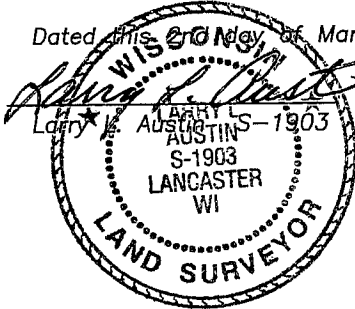


**U.S. PUBLIC LAND SURVEY MONUMENT RECORD – GRANT COUNTY, WI**  
**Section 32, Town 6 North Range 4 West, Town of Mount Hope**

CERTIFICATE

I, Larry L. Austin, do hereby certify that the corner location on this record was determined by me and/or under my direct supervision and that this U.S. public land survey monument record is correct and complete to the best of my knowledge and belief.

Dated this 20<sup>th</sup> day of March, 2004



● = CORNER LOCATION

HISTORY OF CORNER ESTABLISHMENT

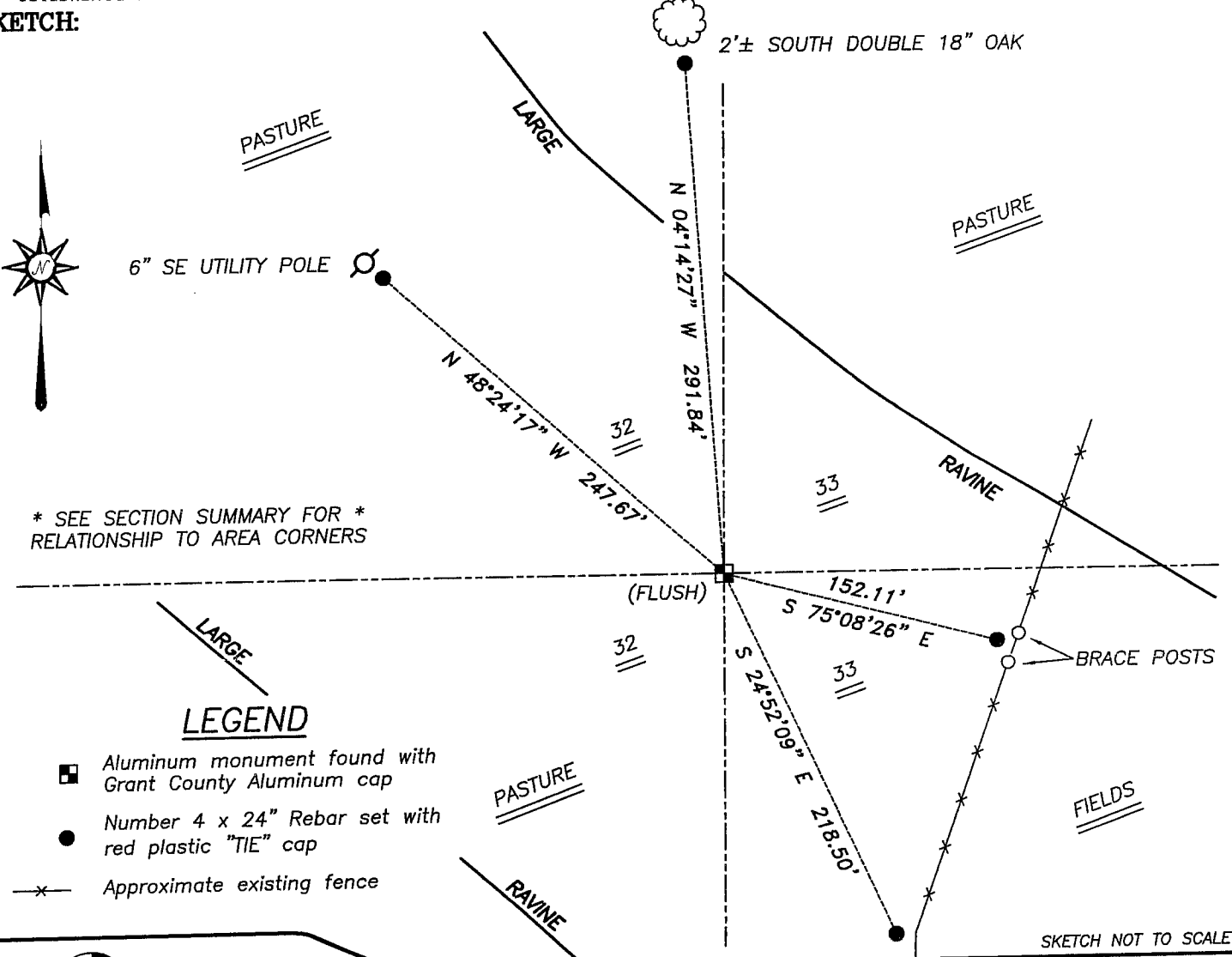
Corner was originally set in 1833 by Parke. In 1995 I set an Aluminum monument with a cap. No other record of the corner was found.

DESCRIPTION OF CORNER EVIDENCE FOUND

I found the existing Aluminum monument and accepted it's location. I set new ties as shown below. Verified this location using EDM & GPS methods.

DESCRIPTION OF CORNER AND WITNESS MONUMENTS, references and accessories used to perpetuate the original or re-established location of this corner. Witnesses to corner location Bobby Sedgwick & Shane Austin & Brad Digman

**SKETCH:**

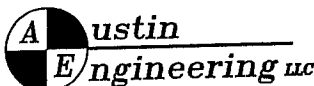


\* SEE SECTION SUMMARY FOR \*  
RELATIONSHIP TO AREA CORNERS

**LEGEND**

- Aluminum monument found with Grant County Aluminum cap
- Number 4 x 24" Rebar set with red plastic "TIE" cap
- \*— Approximate existing fence

SKETCH NOT TO SCALE



4211 HWY 81 E, LANCASTER, WI 53813  
 PHONE 608-723-6363 FAX 608-723-6702

JOB NUMBER 03S326  
 FIELDBOOK: TSDR, 2326  
 G:\T6NR4W\32  
 H:\TIE\T6NR4W\116

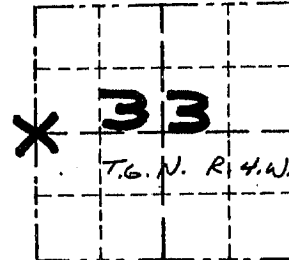
DRAWN BY: SW AUSTIN  
 APPROVED: LL AUSTIN

# GRANT COUNTY

## Survey Monument Record

TYPE OF MONUMENT GRANT COUNTY Alum. Mon. SET  
 STATE PLANE COORDINATES: N \_\_\_\_\_  
 E \_\_\_\_\_  
 ELEVATION — M.S.L. DATUM: \_\_\_\_\_  
 THETA ANGLE: \_\_\_\_\_  
 FIELD BOOK: 95-03  
 PAGE 20

CORNER NO. 116  
 SECTION 33  
 TOWN 6N  
 RANGE 4W  
W 1/4 COR.



LOCATION  
(Indicated by "X")

### BASIS FOR MONUMENT LOCATION

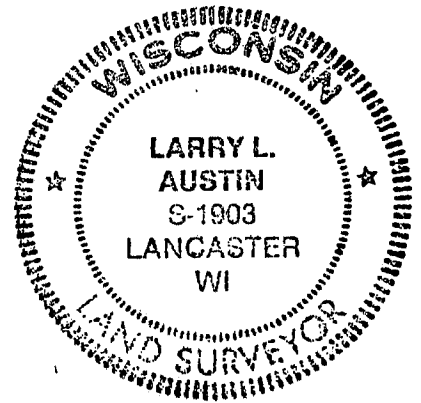
(Use reverse side if necessary)

Show info such as: History of corner, with reference to Vol. and pg., dates, surveyor; exact description of monument replaced; if location computed, by taped or EDM traverse; landowner, remarks, etc.

SEAL:

CORNER ORIGINALLY SET  
 IN 1833 BY HARVEY  
 PARKE.

CORNER WAS RESET AT  
 PROPORTIONAL MEASUREMENTS  
 FROM WEST 1/4 CORNER  
 SECTION 28, AND THE  
 SOUTHWEST CORNER OF  
 SECTION 33, VERIFIED  
 BY EDM TRAVERSE OF  
 AREA



CERTIFIED CORRECT

*Larry L. Austin*  
 Registered Land Surveyor

DATE: 7/15/95

### TIE SKETCH

Show at least three (3) ties and monument

