

04109

# U.S. PUBLIC LAND SURVEY MONUMENT RECORD - GRANT COUNTY, WI

Section 33, Town 6 North Range 4 West, Town of Mount Hope (a)

NOTE: This form is intended and designed to fulfill all requirements of the Wisconsin Administrative Code Chapter A-E 7.08, U.S. Public Land Survey Monument Record (3) (a) (b) (c) (d) (e) (f) (g) (h) (i).

### CERTIFICATE: (i)

I, Aaron J. Austin, Wisconsin Professional Land Surveyor, do hereby certify that the corner location on this record was determined by me and/or under my direct supervision and that this U.S. Public Land Survey Monument Record is correct and complete to the best of my knowledge and belief.

Dated this 20th day of October, 2022.

*Aaron J. Austin*

Aaron J. Austin, S-2922



⊙ = CORNER LOCATION

Grant County Coordinates:  
NAD 83 (2011)  
Northing: 564,362.96  
Easting: 777,910.08

### HISTORY OF CORNER ESTABLISHMENT:

Original corner was set in 1833 by Harvey Parke.  
Larry Austin set a 3/4" Rebar and prepared a Survey Monument Record dated 7/15/1995.  
Larry Austin set a 1" Rebar with a Grant County Aluminum Cap and prepared a Survey Monument Record dated 12/7/1999.

### DESCRIPTION OF CORNER EVIDENCE FOUND: (b) (f) (g) (h)

I found an 1" Rebar and three witness corners Larry set. I set one additional witness corner after I verified the Monument's location with G.P.S. and E.D.M. methods.

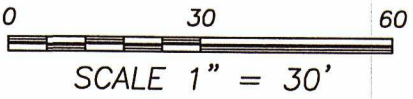
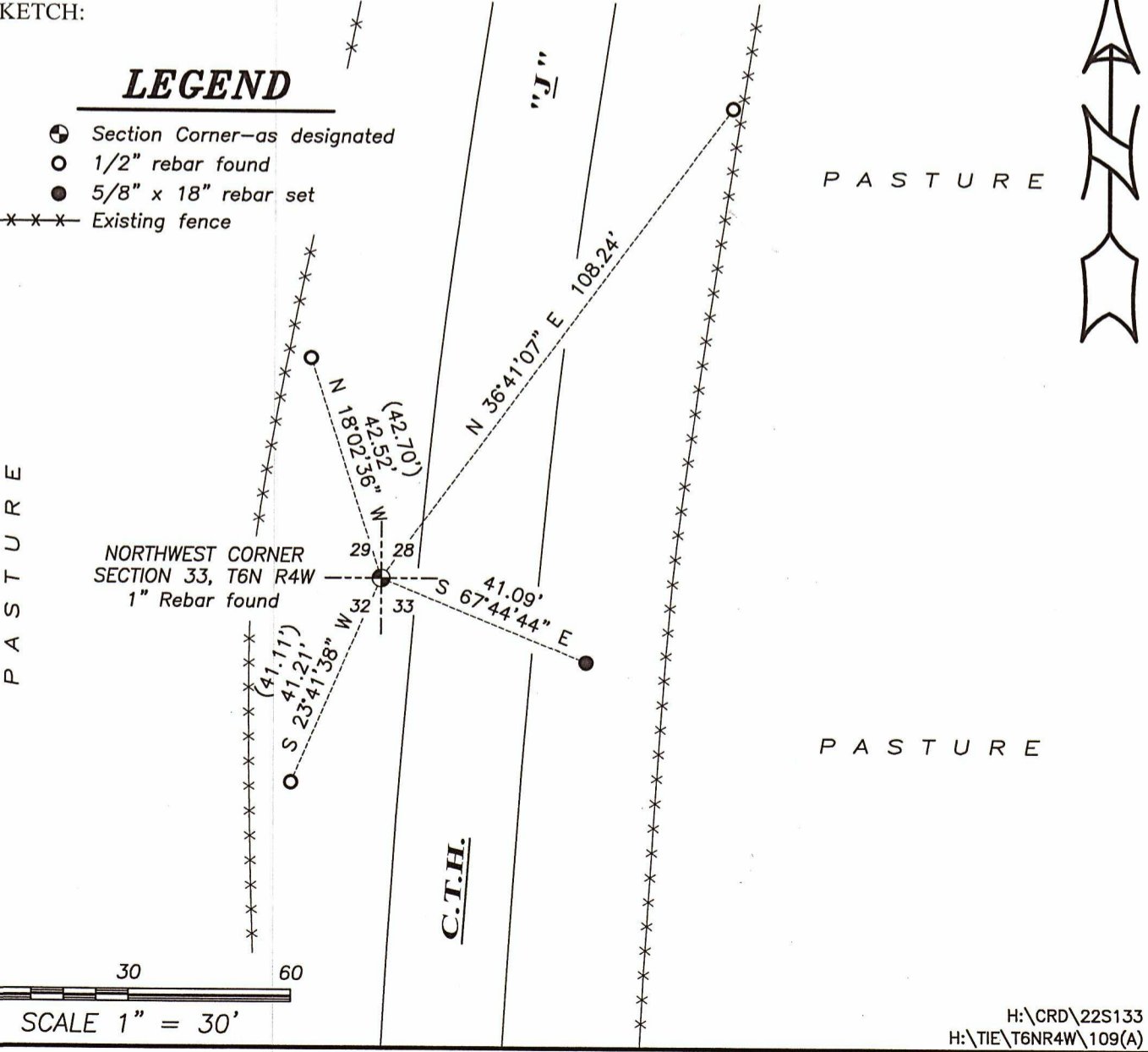
### DESCRIPTION OF CORNER AND WITNESS MONUMENTS, references and accessories used to perpetuate the original or re-established location of this corner. (c) (d) (e)

Witnesses to corner location Owen Austin, Tanner Austin.  
Drawn by: Owen Austin

SKETCH:

### LEGEND

- ⊙ Section Corner—as designated
- 1/2" rebar found
- 5/8" x 18" rebar set
- x-x-x- Existing fence



SCALE 1" = 30'

# GRANT COUNTY CERTIFIED LAND CORNER

**CERTIFICATE:**

I, LARRY L. AUSTIN, DO HEREBY CERTIFY THAT ON 20th DAY OF AUGUST, 1999, I FOUND EVIDENCE OF THE NORTHWEST CORNER OF SECTION 33, TOWN 6 NORTH, RANGE 4 WEST, OF THE FOURTH PRINCIPAL MERIDIAN, AND I RE-ESTABLISHED SAID CORNER ACCORDING TO THE WISCONSIN STATUTES AS SHOWN AND DESCRIBED HEREON.

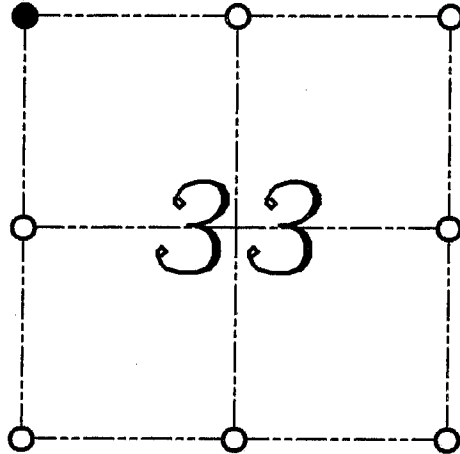
DATED THIS 7th DAY OF DECEMBER, 1999

*Larry L. Austin*  
LARRY L. AUSTIN S-1903



SEAL

CORNER NUMBER 109



● = CORNER LOCATION

NORTHWEST CORNER OF SECTION 33, T 6 N R 4 W TOWN OF MOUNT HOPE

**HISTORY OF ORIGINAL CORNER ESTABLISHMENT:**

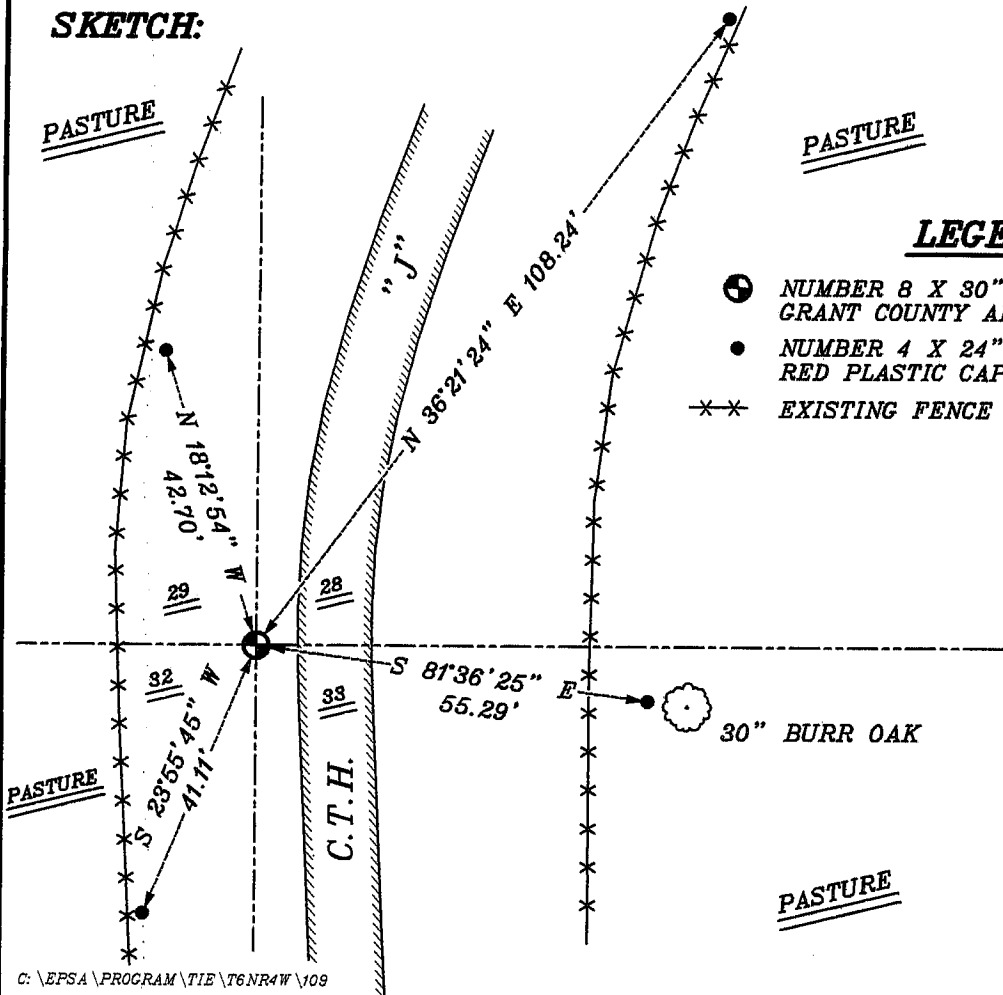
CORNER WAS ORIGINALLY SET IN 1833 BY HARVEY PARKE. IN 1995 I SET THE CORNER BY PROPORTIONING METHODS.

**DESCRIPTION OF CORNER EVIDENCE FOUND:**

NO EVIDENCE OF THE CORNER WAS FOUND. THE CORNER LOCATION WAS RE-ESTABLISHED AT THE LOCATION AS ESTABLISHED IN 1995. VERIFIED THIS LOCATION USING E.D.M. AND G.P.S. METHODS.

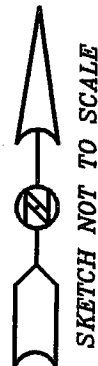
**DESCRIPTION OF CORNER AND WITNESS MONUMENTS, REFERENCES AND ACCESSORIES USED TO PERPETUATE THE ORIGINAL OR RE-ESTABLISHED LOCATION OF THIS CORNER:**  
WITNESS TO THE CORNER LOCATION: BOBBY SEDGWICK ; SHELBY BLINDERT

**SKETCH:**



**LEGEND**

- NUMBER 8 X 30" REBAR SET WITH GRANT COUNTY ALUMINUM CAP
- NUMBER 4 X 24" REBAR SET WITH RED PLASTIC CAP
- \*\* EXISTING FENCE LOCATION



# GRANT COUNTY

## Survey Monument Record

TYPE OF MONUMENT 3/4" X 2 1/4" IRON BAR SET

STATE PLANE COORDINATES: N \_\_\_\_\_  
E \_\_\_\_\_

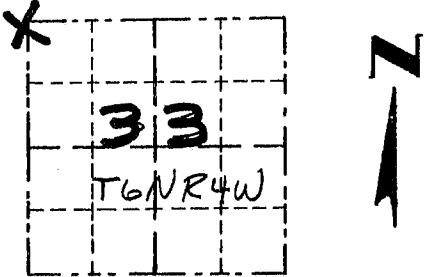
ELEVATION — M.S.L. DATUM: \_\_\_\_\_

THETA ANGLE: \_\_\_\_\_

FIELD BOOK: 95-03

PAGE 18

CORNER NO. 109  
SECTION 33  
TOWN 6N  
RANGE 4W  
NW COR



LOCATION  
(Indicated by "X")

### BASIS FOR MONUMENT LOCATION

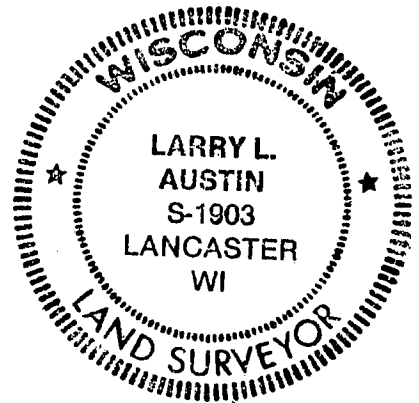
(Use reverse side if necessary)

Show info such as: History of corner, with reference to Vol. and pg., dates, surveyor; exact description of monument replaced; if location computed, by taped or EDM traverse; landowner, remarks, etc.

CORNER ORIGINALLY SET  
IN 1833 BY HARVEY  
PARKE.

CORNER RESET AT PROP.  
MEASUREMENTS FROM THE  
WEST 1/4 SECTION 28 AND  
THE SOUTHWEST CORNER OF  
SECTION 33.

SEAL:



CERTIFIED CORRECT

*Larry L. Austin*  
Registered Land Surveyor

DATE: 7-15-95

### TIE SKETCH

Show at least three (3) ties and monument

