

**U.S. PUBLIC LAND SURVEY MONUMENT RECORD - GRANT COUNTY, WI**

Section 28, Town 6 North Range 4 West, Town of Mt. Hope (a)

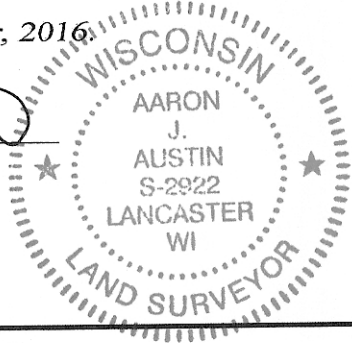
NOTE: This form is intended and designed to fulfill all requirements of the Wisconsin Administrative Code Chapter A-E 7.08, U.S. Public Land Survey Monument Record (3) (a) (b) (c) (d) (e) (f) (g) (h) (i).

**CERTIFICATE: (i)**

I, Aaron J. Austin, Wisconsin Professional Land Surveyor, do hereby certify that the corner location on this record was determined by me and/or under my direct supervision and that this U.S. Public Land Survey Monument Record is correct and complete to the best of my knowledge and belief.

Dated this 14th day of November, 2016.

*Aaron J. Austin*  
Aaron J. Austin, S-2922



Grant County Coordinates:  
NAD 83 (2011)  
Northing: 564,340.61  
Easting: 780,562.10

HISTORY OF CORNER ESTABLISHMENT:

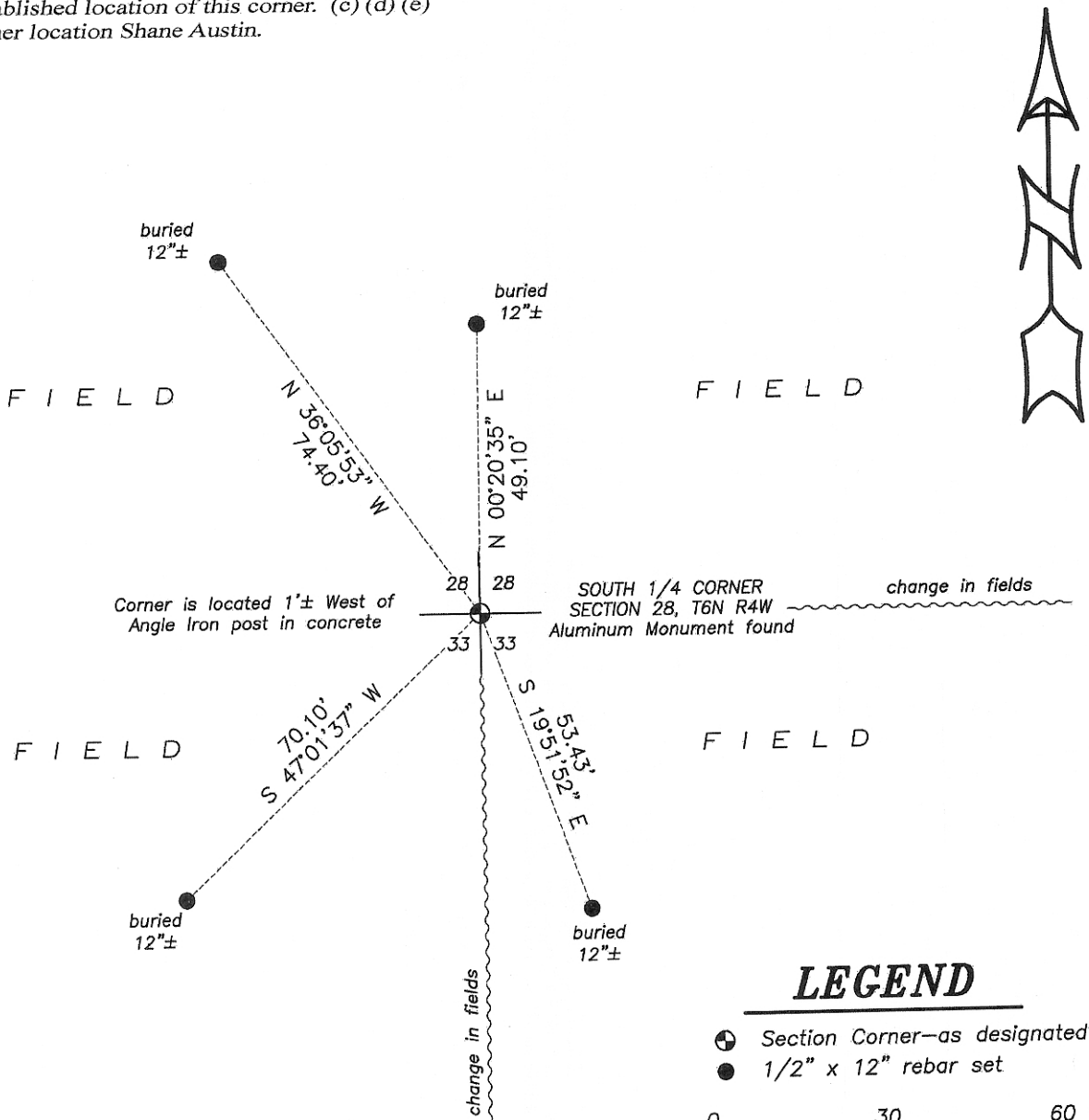
Original corner was set in 1833 by Harvey Parke.  
Larry Austin reset the corner in 1995 and filed a Survey Monument Record for the corner.

DESCRIPTION OF CORNER EVIDENCE FOUND: (b) (f) (g) (h)

The Aluminum Monument was found 1' West of an angle iron post in concrete. The fence has been removed as shown on Larry Austin's tie sheet and no witness corners were recovered. I set 4 witness corners as shown below and I verified the corner's location with G.P.S. and E.D.M. methods

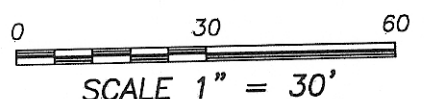
DESCRIPTION OF CORNER AND WITNESS MONUMENTS, references and accessories used to perpetuate the original or re-established location of this corner. (c) (d) (e)  
Witnesses to corner location Shane Austin.

SKETCH:



**LEGEND**

- ⊕ Section Corner—as designated
- 1/2" x 12" rebar set

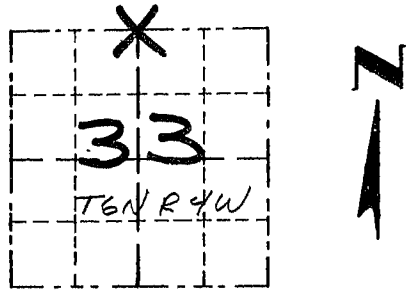


# GRANT COUNTY

## Survey Monument Record

TYPE OF MONUMENT GRANT COUNTY Alum. Mon.  
 STATE PLANE COORDINATES: N \_\_\_\_\_  
 E \_\_\_\_\_  
 ELEVATION — M.S.L. DATUM: \_\_\_\_\_  
 THETA ANGLE: \_\_\_\_\_  
 FIELD BOOK: 95-03  
 PAGE: (19)

CORNER NO. 108  
 SECTION 33  
 TOWN 6N  
 RANGE 4W



LOCATION  
 (Indicated by "X")

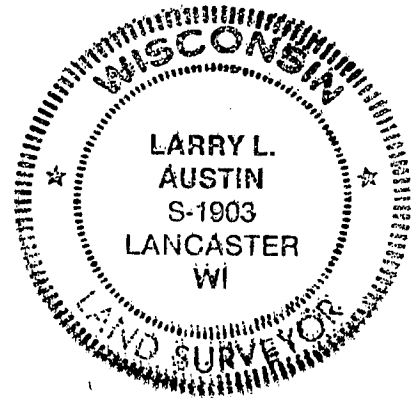
### BASIS FOR MONUMENT LOCATION

(Use reverse side if necessary)  
 Show info such as: History of corner, with reference to Vol. and pg., dates, surveyor; exact description of monument replaced; if location computed, by taped or EDM traverse; landowner, remarks, etc.

SEAL:

CORNER ORIGINALLY SET  
 IN 1833 BY HARVEY  
 PARKE.

CORNER WAS RESET AT  
 OCCUPATIONAL EVIDENCE  
 LOCATION AND VERIFIED  
 BY EDM TRAVERSE  
 OF THE AREA.



CERTIFIED CORRECT

*Larry L. Austin*  
 Registered Land Surveyor

DATE: 7/15/95

### TIE SKETCH

Show at least three (3) ties and monument

