

04104

# U.S. PUBLIC LAND SURVEY MONUMENT RECORD - GRANT COUNTY, WI

Section 26, Town 6 North Range 4 West, Town of Mount Hope (a)

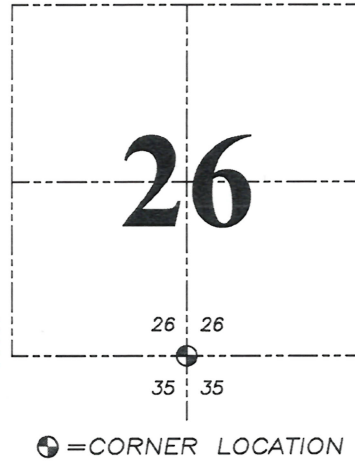
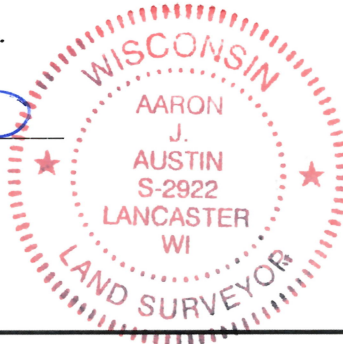
NOTE: This form is intended and designed to fulfill all requirements of the Wisconsin Administrative Code Chapter A-E 7.08, U.S. Public Land Survey Monument Record (3) (a) (b) (c) (d) (e) (f) (g) (h) (i).

**CERTIFICATE:** (i)

I, Aaron J. Austin, Wisconsin Professional Land Surveyor, do hereby certify that the corner location on this record was determined by me and/or under my direct supervision and that this U.S. Public Land Survey Monument Record is correct and complete to the best of my knowledge and belief.

Dated this 3rd day of June, 2024.

*Aaron J. Austin*  
Aaron J. Austin, S-2922



Grant County Coordinates:  
NAD 83 (2011)  
Northing: 564,346.65  
Easting: 791,163.22

HISTORY OF CORNER ESTABLISHMENT:

Original corner was set in 1833 by Harvey Parke.  
Thomas Buck set a 3/4" Rebar and prepared a Survey Monument Record dated 7-30-1999.

DESCRIPTION OF CORNER EVIDENCE FOUND: (b) (f) (g) (h)

I found the 3/4" Rebar and one witness corner Buck set. I set three additional witness corners after I verified the Monument's location with G.P.S. and E.D.M. methods.

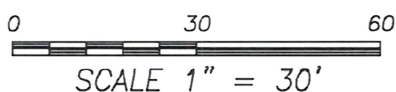
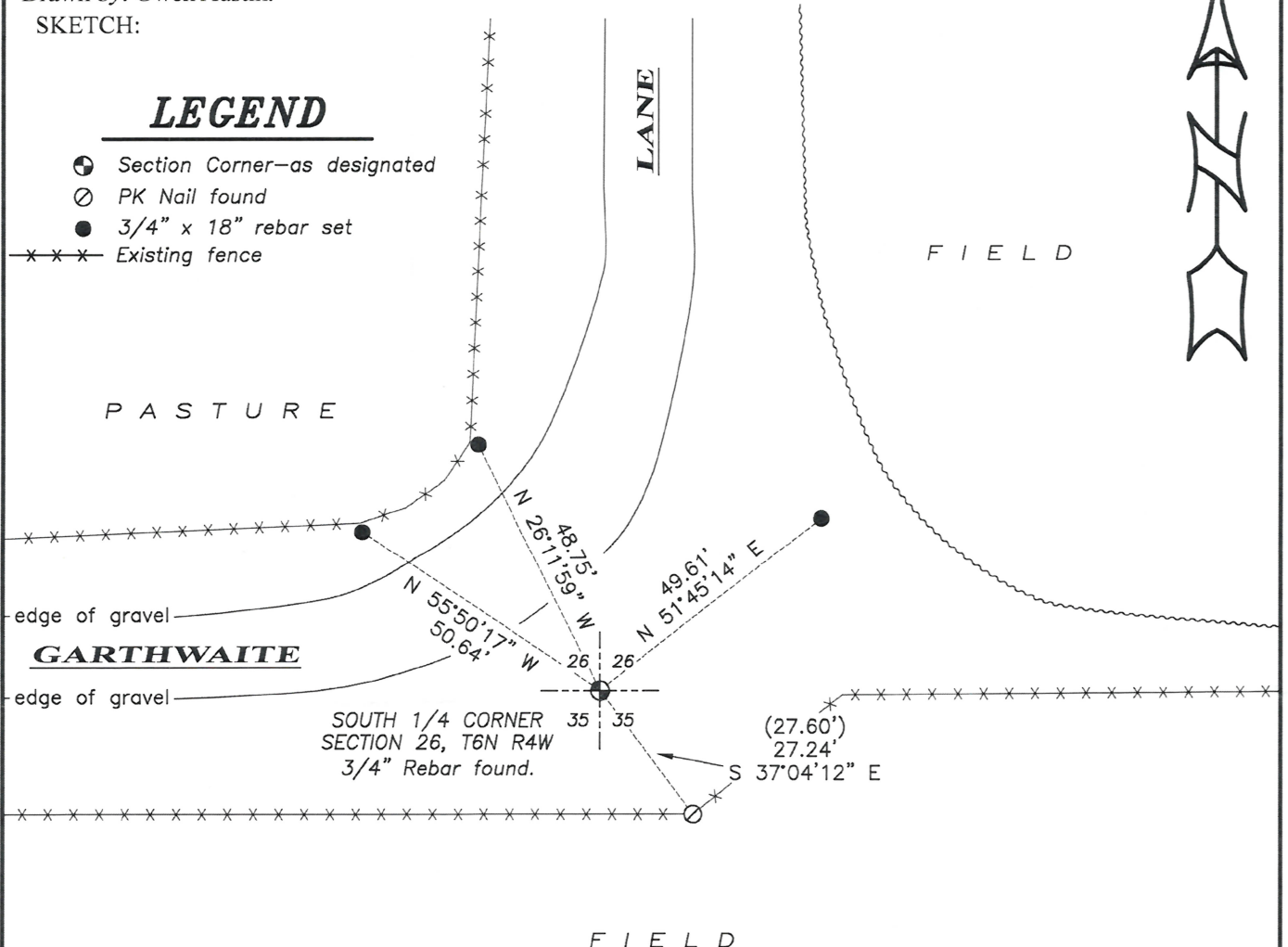
DESCRIPTION OF CORNER AND WITNESS MONUMENTS, references and accessories used to perpetuate the original or re-established location of this corner. (c) (d) (e)

Witnesses to corner location Owen Austin, Tanner Austin.  
Drawn by: Owen Austin.

SKETCH:

### LEGEND

- ⊙ Section Corner—as designated
- PK Nail found
- 3/4" x 18" rebar set
- x-x-x- Existing fence

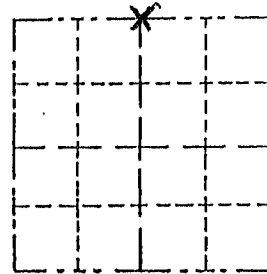


JOB#23S261  
H:\CRD\23S261  
H:\TIE\T6NR4W\104

Survey Monument Record

CORNER NO. \_\_\_\_\_  
 SECTION 35  
 TOWN 6 NORTH  
 RANGE 4 WEST

TYPE OF MONUMENT 3/4" X 24" Iron Rod  
 STATE PLANE COORDINATES: N \_\_\_\_\_  
 E \_\_\_\_\_  
 ELEVATION — M.S.L. DATUM: \_\_\_\_\_  
 THETA ANGLE: \_\_\_\_\_  
 FIELD BOOK: \_\_\_\_\_  
 PAGE \_\_\_\_\_



LOCATION  
 (Indicated by "X")

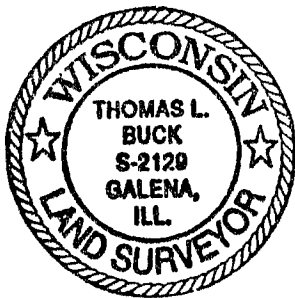
- FOUND PERPETUATED LOCATION
- OBLITERATED EVIDENCE LOCATION
- LOST CORNER (RESTORED BY PROPORTIONATE METHODS)

BASIS FOR MONUMENT LOCATION

(Use reverse side if necessary)

Show info such as: History of corner, with reference to Vol. and pg., dates, surveyor; exact description of monument replaced; if location computed, by taped or EDM traverse; landowner, remarks, etc.

I FOUND NO HISTORY OF THIS CORNER SINCE THE ORIGINAL GOVERNMENT SURVEY. I SET THIS CORNER ON THE EXTENTION OF A FENCE LINE ALONG THE NORTH LINE OF THE NE 1/4 AND THE SPLIT DISTANCE BETWEEN THE NE CORNER AND THE NW CORNER OF SECTION 35. AFTER AN E.D.M. TRAVERSE AND LOCATION SURVEY OF SECTIONS 35 & 26



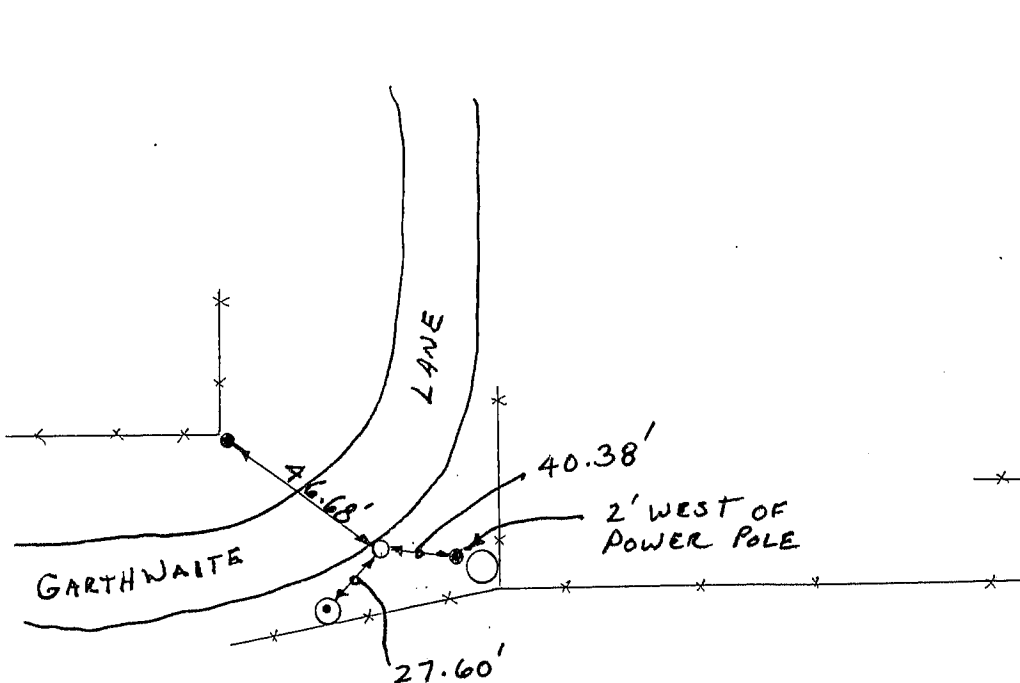
CERTIFIED CORRECT TO THE BEST OF MY KNOWLEDGE AND BELIEF

Thomas Buck  
 Registered Land Surveyor

DATE: 7/30/99

TIE SKETCH

Show at least three (3) ties and monument



NO SCALE

- = 3/4" X 24" IRON ROD
- = 1/2" IRON ROD
- ⊙ = P.K. w/SHINER ON TOP BRACE POST
- \*—\*— = EXISTING FENCE