

U.S. PUBLIC LAND SURVEY MONUMENT RECORD - GRANT COUNTY, WI

Section 36, Town 6 North Range 4 West, Town of Mount Hope (a)

NOTE: This form is intended and designed to fulfill all requirements of the Wisconsin Administrative Code Chapter A-E 7.08, U.S. Public Land Survey Monument Record (3) (a) (b) (c) (d) (e) (f) (g) (h) (i).

CERTIFICATE: (i)

I, Aaron J. Austin, Wisconsin Professional Land Surveyor, do hereby certify that the corner location on this record was determined by me and/or under my direct supervision and that this U.S. Public Land Survey Monument Record is correct and complete to the best of my knowledge and belief.

Dated this 3rd day of June, 2024.

Aaron J. Austin
Aaron J. Austin, S-2922



⊕ = CORNER LOCATION

Grant County Coordinates:
NAD 83 (2011)
Northing: 564,314.45
Easting: 793,824.36

HISTORY OF CORNER ESTABLISHMENT:

Original corner was set in 1833 by Harvey Parke.
Laurence Schmit set a 3/4" Rebar and prepared a Survey Monument Record dated 7-11-1994.

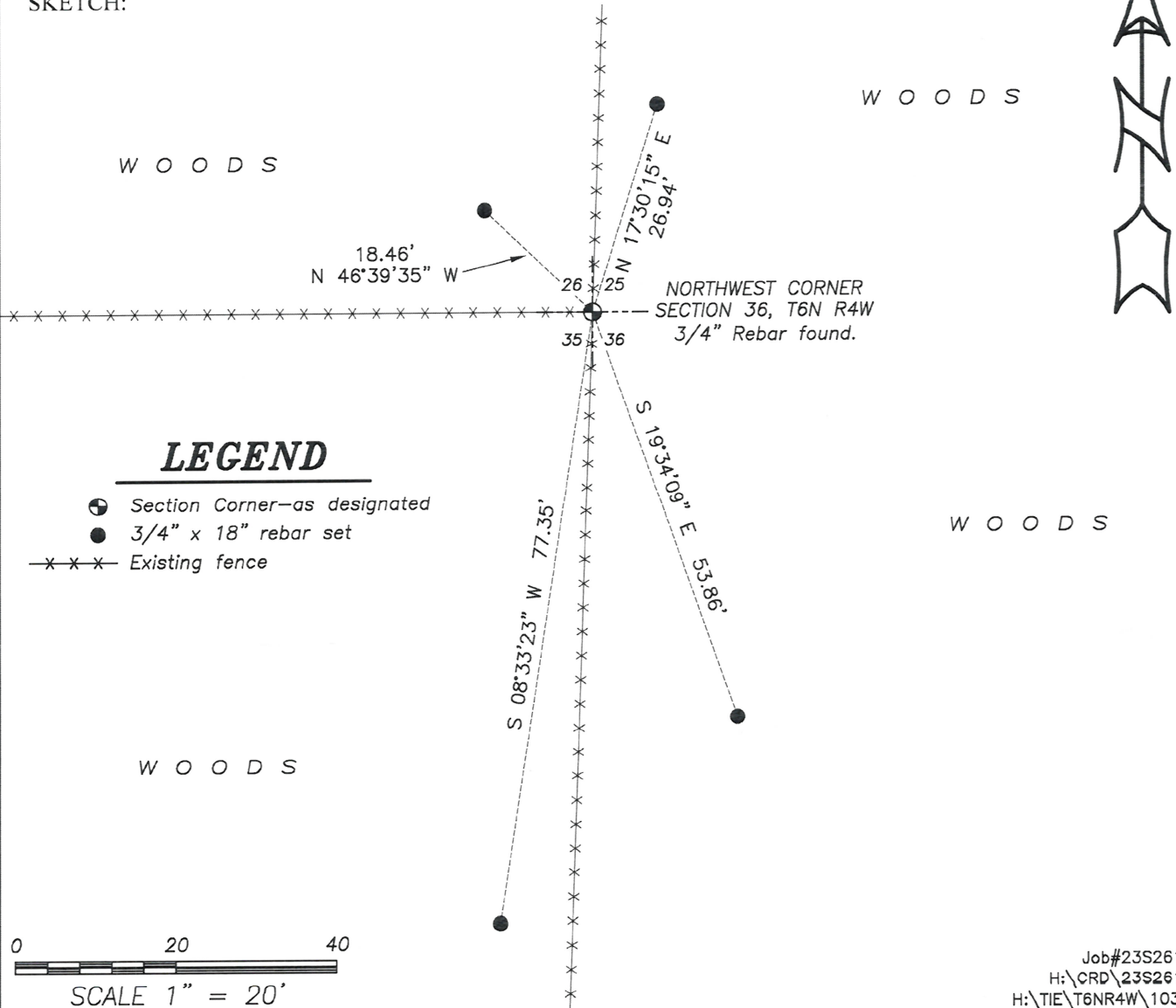
DESCRIPTION OF CORNER EVIDENCE FOUND: (b) (f) (g) (h)

I found the 3/4" Rebar Schmit set. I set four witness corners after I verified the Monument's location with G.P.S. and E.D.M. methods.

DESCRIPTION OF CORNER AND WITNESS MONUMENTS: references and accessories used to perpetuate the original or re-established location of this corner. (c) (d) (e)

Witnesses to corner location Owen Austin, Tanner Austin.
Drawn by: Owen Austin.

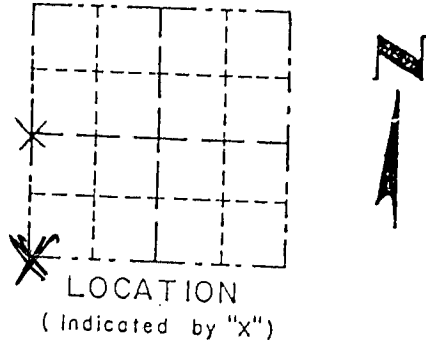
SKETCH:



Survey Monument Record

CORNER NO. 103
 SECTION 25
 TOWN 6N
 RANGE 4W

TYPE OF MONUMENT 3/4" rebar
 STATE PLANE COORDINATES: N _____
 E _____
 ELEVATION — M.S.L. DATUM: _____
 THETA ANGLE: _____
 FIELD BOOK: 94-5
 PAGE _____



BASIS FOR MONUMENT LOCATION

(Use reverse side if necessary)
 Show info such as: History of corner, with reference to Vol. and pg., dates, surveyor; exact description of monument replaced; if location computed, by taped or EDM traverse; landowner, remarks, etc.

SEAL:

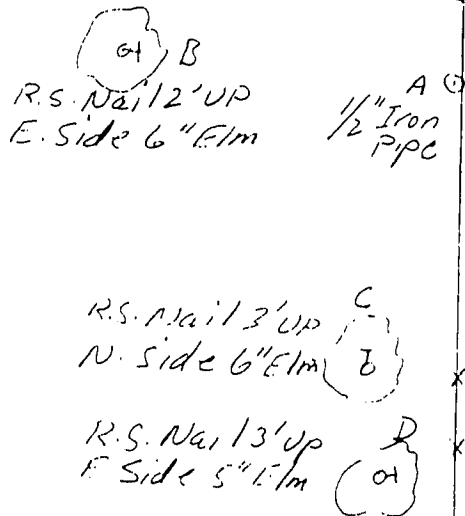
There are no recent survey records of this corner. The occupied location of a 3 way fence intersection was monumented after an E.D.M. traverse of the area.



CERTIFIED CORRECT
Laurence E. Schmit
 Registered Land Surveyor
 DATE: 7-11-94

TIE SKETCH

Show at least three (4) ties and monument



NO SCALE
 Legend
 -X-X- fence

- Ties and Distance from corner
- 1 N 0°24'49"W, 80.73'
 - 2 N 31°05'35"W, 98.55'
 - 3 N 21°18'30"W, 38.81'
 - 4 N 27°22'34"W, 18.58'