

SEP 17 1997

U. S. PUBLIC LAND SURVEY MONUMENT RECORD

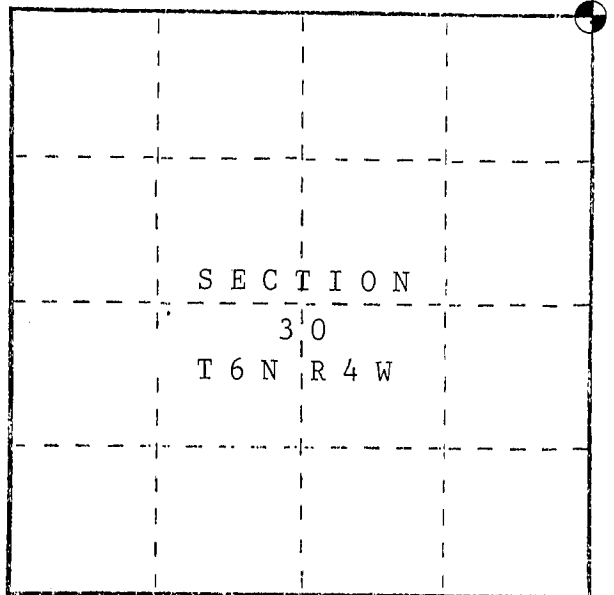
INSTRUCTIONS : This record shall show the location of the corner and shall include all of the following nine elements (a through i).

(a) Identify the corner by reference to the U.S. public land survey system.

○ = Corner monument restored.

Northeast corner of Section 30,
Town 6 North, Range 4 West, Town of
Mount Hope, Grant County, WI

Set aluminum monument (DOT)



(b) Describe any record evidence, monument evidence, occupational evidence, testimonial evidence or any other material evidence you considered, and whether the monument was found or placed.

Volume D, page 101, Grant County Survey Records-Survey dated September 1, 1881 of the South line of the SE $\frac{1}{4}$ of Section 19 references two bearing trees to this corner.

Volume D, page 102, Grant County Survey Records-Survey dated September 1, 1881 of Section 20 shows original bearing tree at this corner.

I located several large oak trees near this corner but they didn't fit the location as referenced in the above surveys. I located a possible stone in an old East-West fence (barb wire in ground only remaining evidence). This fit within 3' of the distance on the South line of the SW $\frac{1}{4}$ of Section 20 as recorded in Volume D, page 102. The measured distance across the South line of the SE $\frac{1}{4}$ also was within 3' of the *

(c) In the plan view drawing below, provide reference ties to at least 4 witness monuments, or, if the location is within a municipality, to at least 2 witness monuments. (Witness monuments shall be made of concrete, natural stone, iron or other equally durable material.)

Describe witness monuments.

* recorded distance in Volume D, page 102. I set an aluminum monument at stone. This location also matches a perfect straight line across the North line of Section 30.

(d) Show a plan view drawing depicting the relevant monuments and reference ties which is sufficient in detail to enable accurate relocation of the corner monument if the corner monument is disturbed. Indicate north.

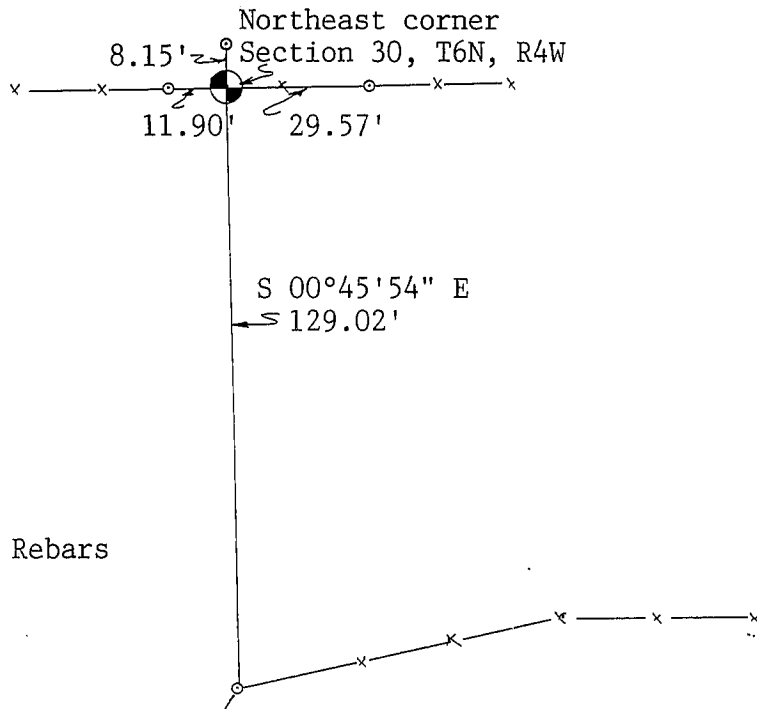


Scale 1"=40'

Grid Bearing

● Set aluminum monument

○ Reference ties are 5/8" x 18" Rebars



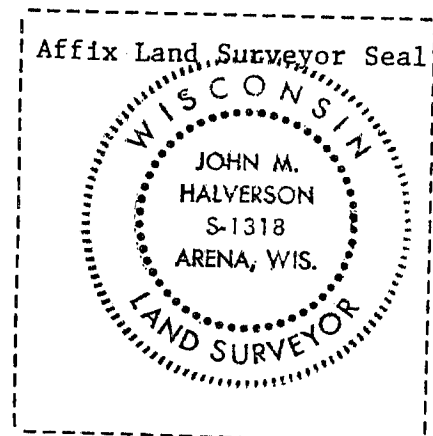
(e) Describe any material discrepancy between the location of the corner as restored or reestablished and the location of that corner as previously restored or reestablished by distance and direction. Show the discrepancy on the plan view drawing under (d), above. Show the distances between the corner as previously restored or reestablished and (1) the corner as restored or reestablished, and (2) to at least 2 of the witness monuments shown on the drawing in (d), above.

(f) Was the corner restored through acceptance of (1) an obliterated evidence location, or, (2) a found perpetuated location?

(g&h) Was the corner reestablished through lost corner proportionate methods? If so, show the method, including the directions and distances to other public land survey corners used as evidence or used for proportioning in determining the corner location?

No.

(i) I, John M. Halverson
(type or print name) certify that the corner location shown on this record was determined by me or under my direction and control and that this U.S. Public Land Survey Monument Record is correct and complete to the best of my knowledge and belief.



John M. Halverson
Signature

11/13/92
Date