



SEP 27 1965

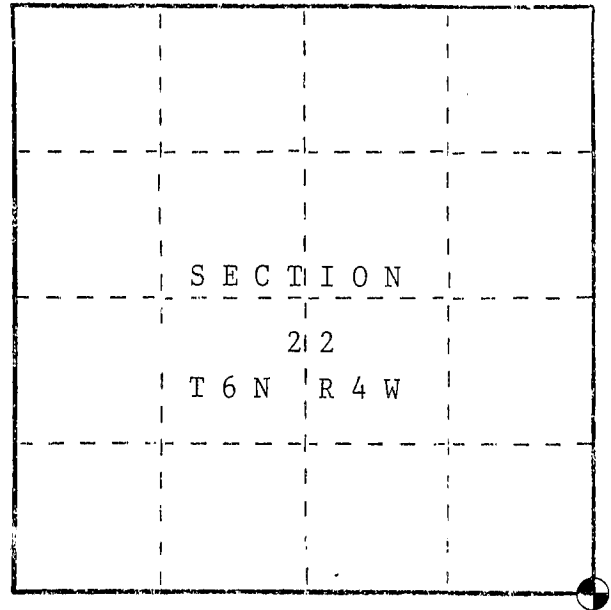
# U. S. PUBLIC LAND SURVEY MONUMENT RECORD

**I N S T R U C T I O N S :** This record shall show the location of the corner and shall include all of the following nine elements (a through i).

- (a) Identify the corner by reference to the U.S. public land survey system.
- = Corner monument restored.

Southeast corner of Section 22,  
Town 6 North, Range 4 West, Town of  
Mt. Hope, Grant County, WI

Set aluminum monument (DOT)



- (b) Describe any record evidence, monument evidence, occupational evidence, testimonial evidence or any other material evidence you considered, and whether the monument was found or placed.

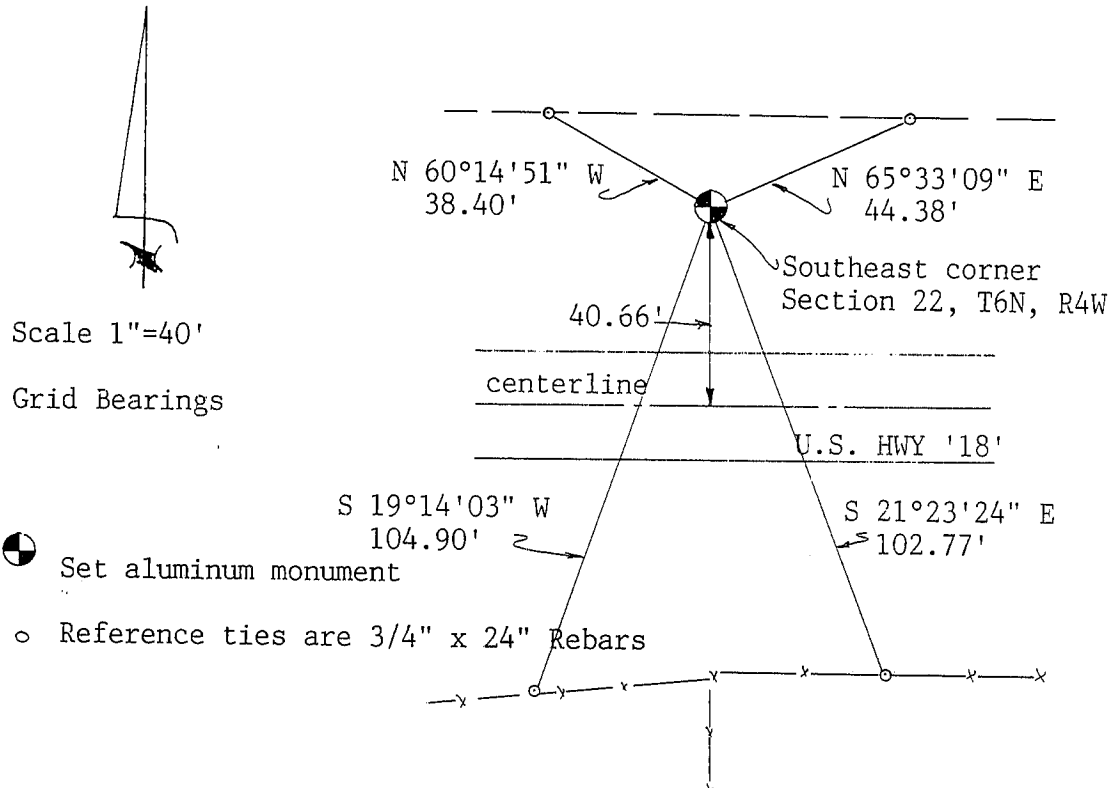
Vol. B, Page 60, Grant County Survey Records- dated May 27, 1847-found original bearing trees.

Volume 2 of Highway Conveyances, Page 204 states this corner is 62.5' North of the centerline of U.S. HWY '18'.

There is no evidence of occupation at this corner except occupation fences North and South of the highway. Excavated a large area and found no evidence of corner. I set this corner at the proportionate distance from the East 1/4 corner of Section 27 and the Northeast corner of Section 22 in line with occupation line North of highway. This location is 40.66' North of the centerline of U.S. HWY '18'.

- (c) In the plan view drawing below, provide reference ties to at least 4 witness monuments, or, if the location is within a municipality, to at least 2 witness monuments. (Witness monuments shall be made of concrete, natural stone, iron or other equally durable material.) Describe witness monuments.

- (d) Show a plan view drawing depicting the relevant monuments and reference ties which is sufficient in detail to enable accurate relocation of the corner monument if the corner monument is disturbed. Indicate north.



85

