

SEP 17 1993

# U. S. PUBLIC LAND SURVEY MONUMENT RECORD

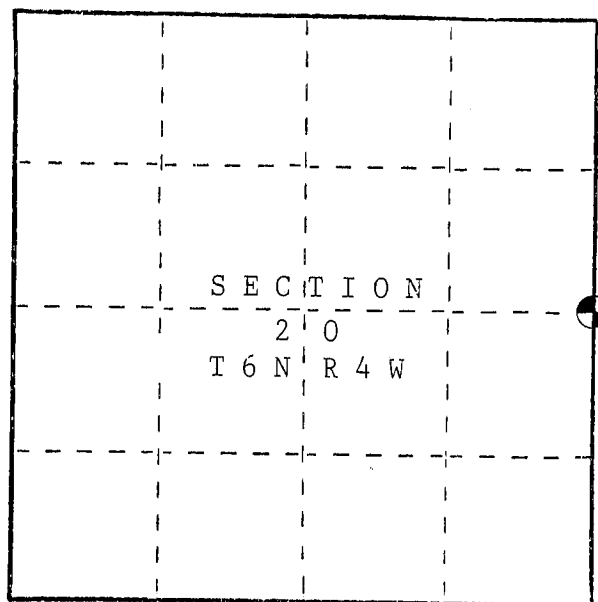
**I N S T R U C T I O N S :** This record shall show the location of the corner and shall include all of the following nine elements (a through i).

(a) Identify the corner by reference to the U.S. public land survey system.

○ = Corner monument restored.

East  $\frac{1}{4}$  corner of Section 20,  
Town 6 North, Range 4 West, Town of  
Mount Hope, Grant County, WI

Set  $1\frac{1}{4}$ " x 30" Iron Rod



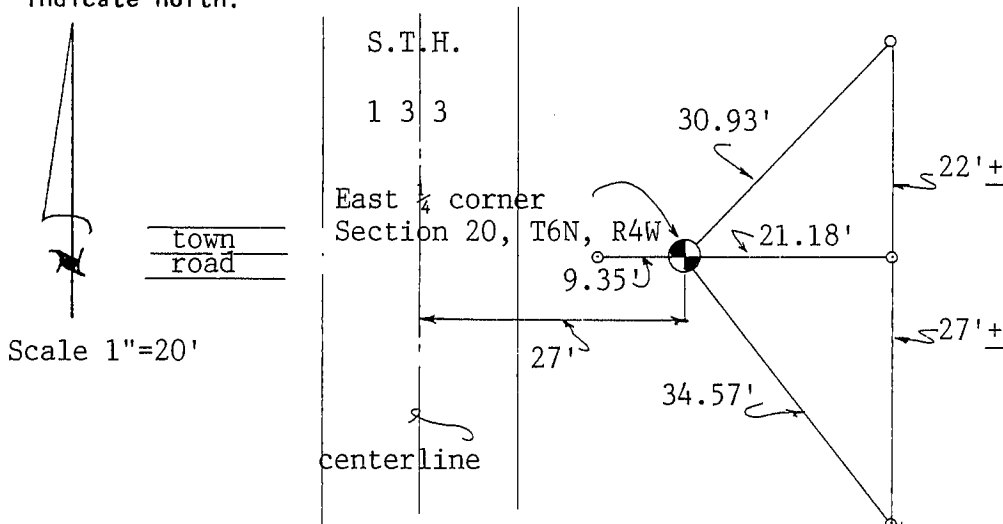
(b) Describe any record evidence, monument evidence, occupational evidence, testimonial evidence or any other material evidence you considered, and whether the monument was found or placed.

Volume D, Page 101, Grant County Survey Records—Survey dated September 1, 1881 shows there is a stone in highway at this corner.

The existing highway has been relocated in this area. We excavated a large area and could not find the stone. We did dig through an old roadbed. I set this corner in line with the town road West and on a straight line from the Northeast corner of Section 20 to the Southeast corner of Section 20. The East line of the SE $\frac{1}{4}$  is 4' short of the recorded distance as shown on the above survey.

(c) In the plan view drawing below, provide reference ties to at least 4 witness monuments, or, if the location is within a municipality, to at least 2 witness monuments. (Witness monuments shall be made of concrete, natural stone, iron or other equally durable material.) Describe witness monuments.

(d) Show a plan view drawing depicting the relevant monuments and reference ties which is sufficient in detail to enable accurate relocation of the corner monument if the corner monument is disturbed. Indicate north.



● Set  $1\frac{1}{4}$ " x 30" Iron Rod

○ Reference ties are  $\frac{5}{8}$ " x 18" Rebars

(e) Describe any material discrepancy between the location of the corner as restored or reestablished and the location of that corner as previously restored or reestablished by distance and direction. Show the discrepancy on the plan view drawing under (d), above. Show the distances between the corner as previously restored or reestablished and (1) the corner as restored or reestablished, and (2) to at least 2 of the witness monuments shown on the drawing in (d), above.

---

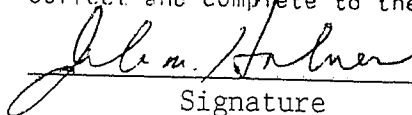
(f) Was the corner restored through acceptance of (1) an obliterated evidence location, or, (2) a found perpetuated location?

---

(g&h) Was the corner reestablished through lost corner proportionate methods? If so, show the method, including the directions and distances to other public land survey corners used as evidence or used for proportioning in determining the corner location?

No.

(i) I, John M. Halverson  
(type or print name) certify that the corner location shown on this record was determined by me or under my direction and control and that this U.S. Public Land Survey Monument Record is correct and complete to the best of my knowledge and belief.

  
Signature

11/13/92  
Date

