

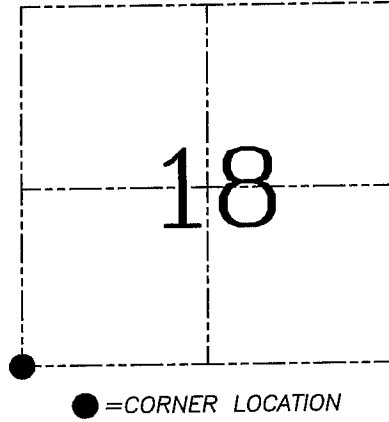
U.S. PUBLIC LAND SURVEY MONUMENT RECORD – GRANT COUNTY, WI
Section 18, Town 6 North Range 4 West, Town of Mount Hope

CERTIFICATE

I, Larry L. Austin, do hereby certify that the corner location on this record was determined by me and/or under my direct supervision and that this U.S. public land survey monument record is correct and complete to the best of my knowledge and belief.

Dated this 10th day of December, 2005

Larry L. Austin
 Larry L. Austin
 No. 1903-1903
 LANCASTER
 WI
 LAND SURVEYOR



HISTORY OF CORNER ESTABLISHMENT

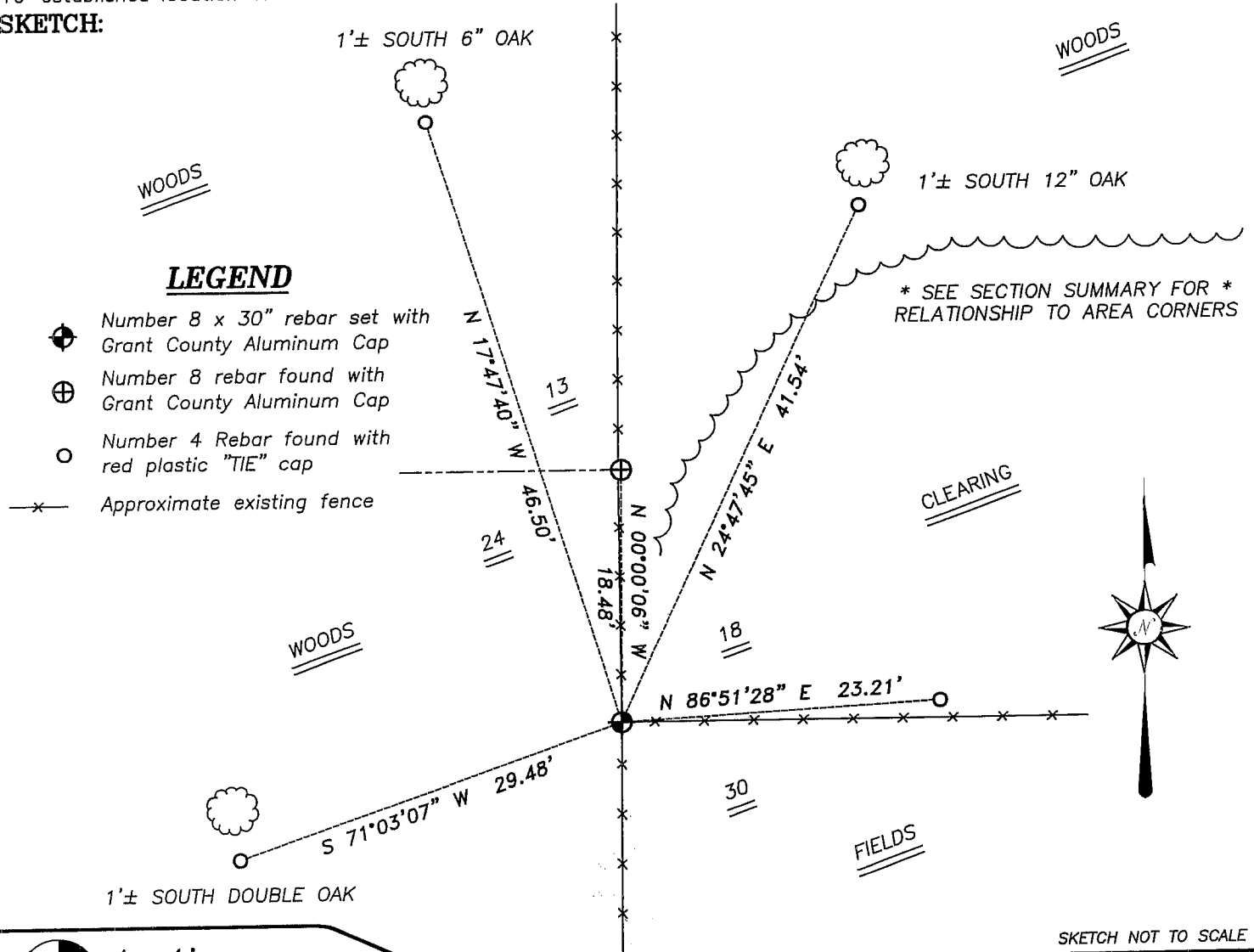
Corner was originally set in 1833 by Parke.
 No other record of the corner was found.

DESCRIPTION OF CORNER EVIDENCE FOUND

I reset the corner at the recorded offset from the existing Southeast corner of Section 13. Verified this location using EDM & GPS methods.

DESCRIPTION OF CORNER AND WITNESS MONUMENTS, references and accessories used to perpetuate the original or re-established location of this corner. Witnesses to corner location Bobby Sedgwick & Brad Digman & Shane Austin

SKETCH:



LEGEND

- Number 8 x 30" rebar set with Grant County Aluminum Cap
- ⊕ Number 8 rebar found with Grant County Aluminum Cap
- Number 4 Rebar found with red plastic "TIE" cap
- x— Approximate existing fence

WOODS

WOODS

WOODS

* SEE SECTION SUMMARY FOR *
 RELATIONSHIP TO AREA CORNERS

CLEARING

FIELDS



SKETCH NOT TO SCALE

Austin Engineering LLC
 4211 HWY 81 E, LANCASTER, WI 53813
 PHONE 608-723-6363 FAX 608-723-6702

JOB NUMBER 05S207
 FIELDBOOK: TDSR, 2517
 G:\T6NR5W\13
 H:\TIE\T6NR4W\73

DRAWN BY: SW AUSTIN
 APPROVED: LL AUSTIN