

U.S. PUBLIC LAND SURVEY MONUMENT RECORD - GRANT COUNTY, WI

Section 14, Town 6 North Range 4 West, Town of Mount Hope (a)

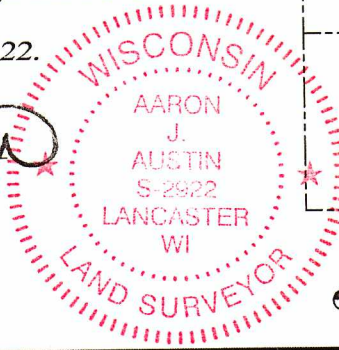
NOTE: This form is intended and designed to fulfill all requirements of the Wisconsin Administrative Code Chapter A-E 7.08, U.S. Public Land Survey Monument Record (3) (a) (b) (c) (d) (e) (f) (g) (h) (i).

CERTIFICATE: (i)

I, Aaron J. Austin, Wisconsin Professional Land Surveyor, do hereby certify that the corner location on this record was determined by me and/or under my direct supervision and that this U.S. Public Land Survey Monument Record is correct and complete to the best of my knowledge and belief.

Dated this 16th day of December, 2022.

Aaron J. Austin, S-2922



● = CORNER LOCATION

Grant County Coordinates: NAD 83 (2011) Northing: 577,610.42 Easting: 793,816.08

HISTORY OF CORNER ESTABLISHMENT:

Original corner was set in 1833 by Harvey Parke. Laurence Schmit set a 1" Iron Pipe on a Survey filed in Book G, Page 240 dated 10-4-1978. John Halverson found a 1" Iron Pipe and prepared a Survey Monument Record dated 8-1-1983. Bruce Bowden found a 1" Iron Pipe and prepared a Survey Monument Record dated 3-11-1985.

DESCRIPTION OF CORNER EVIDENCE FOUND: (b) (f) (g) (h)

I found a 1" Iron Pipe and two witness corners. I set two additional witness corners after I verified the Monument's location with G.P.S. and E.D.M. methods.

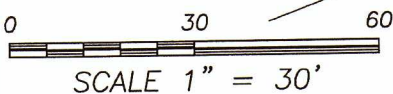
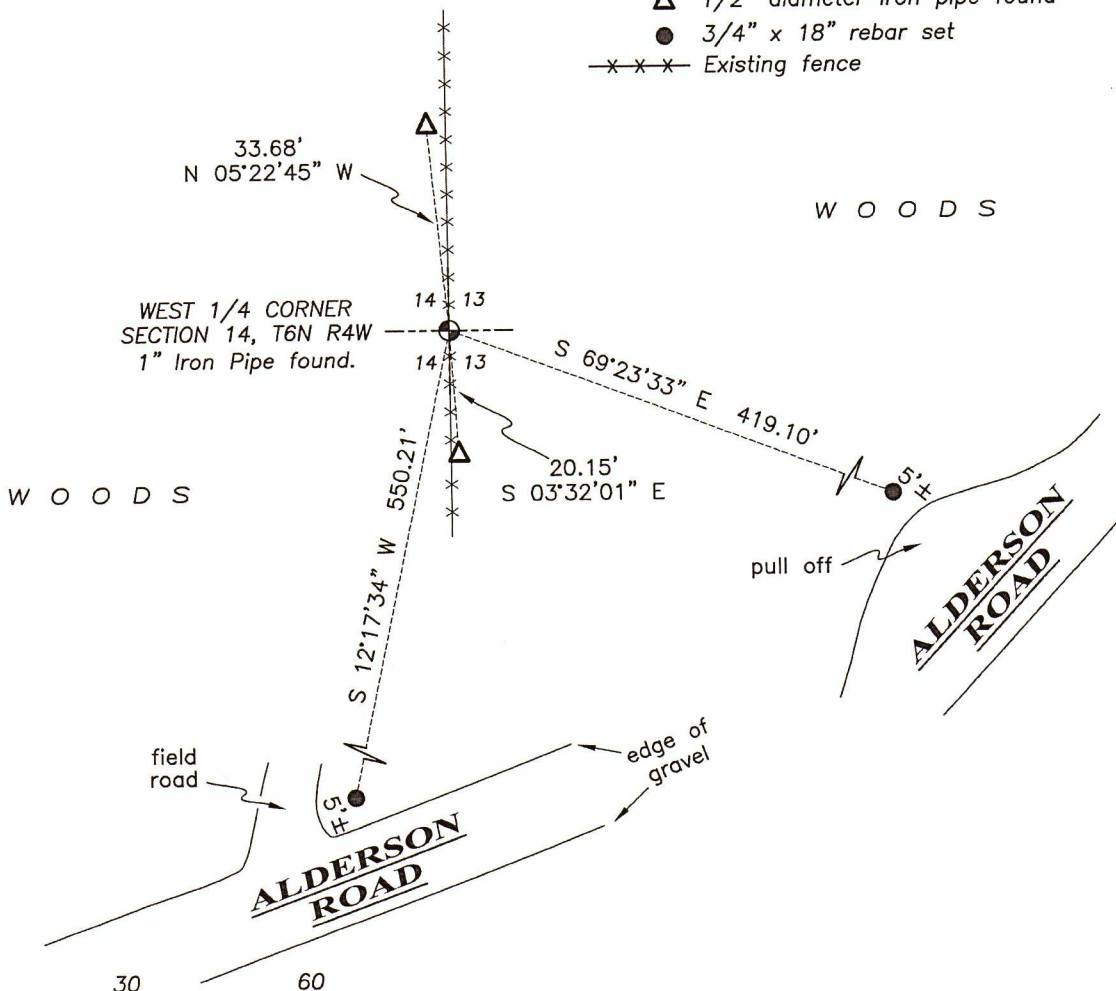
DESCRIPTION OF CORNER AND WITNESS MONUMENTS, references and accessories used to perpetuate the original or re-established location of this corner. (c) (d) (e)

Witnesses to corner location Shane Austin, Tanner Austin. Drawn by: Owen Austin

SKETCH:

LEGEND

- Section Corner—as designated
1/2" diameter iron pipe found
3/4" x 18" rebar set
Existing fence



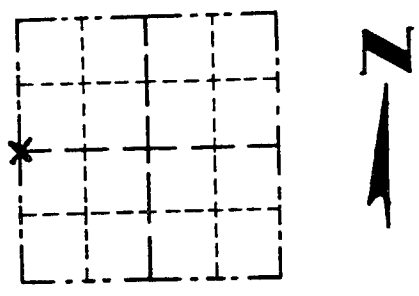
SCALE 1" = 30'

GRANT COUNTY

Survey Monument Record

CORNER NO. 59
 SECTION 13
 TOWN 6 N
 RANGE 4 W

TYPE OF MONUMENT 1" Round Iron Pipe
 STATE PLANE COORDINATES: N _____
 E _____
 ELEVATION — M.S.L. DATUM: _____
 THETA ANGLE: _____
 FIELD BOOK: _____
 PAGE _____



LOCATION
(Indicated by "X")

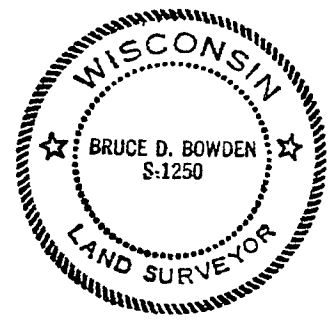
BASIS FOR MONUMENT LOCATION

(Use reverse side if necessary)

Show info such as: History of corner, with reference to Vol. and pg., dates, surveyor; exact description of monument replaced; if location computed, by taped or EDM traverse; landowner, remarks, etc.

SEAL:

Accepted 1" iron pipe found at corner as recorded on a survey by Laurence E. Schmit dated October 4, 1978.



MAR 12 1985

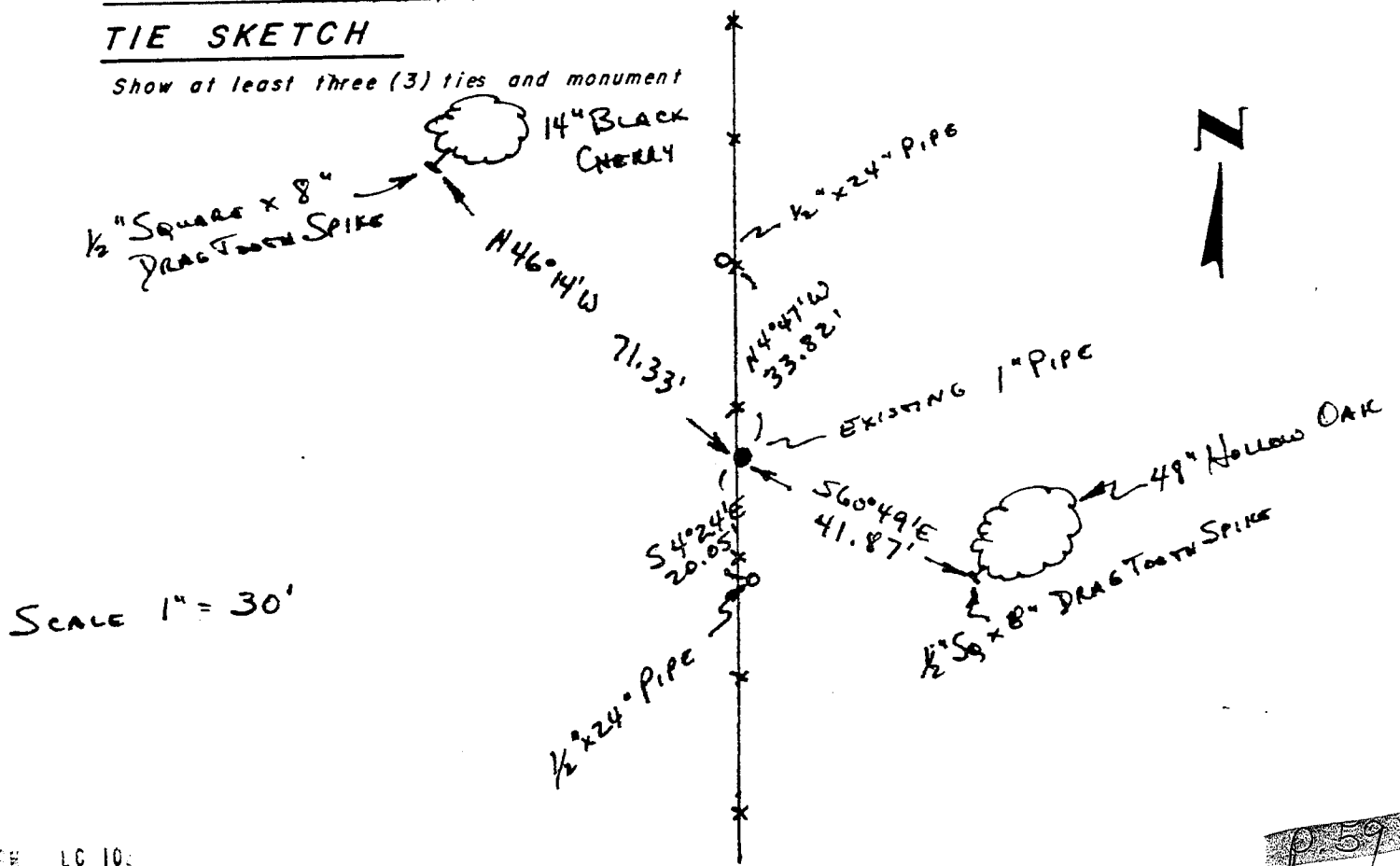
CERTIFIED CORRECT

Bruce D. Bowden
Registered Land Surveyor

DATE: March 11, 1985

TIE SKETCH

Show at least three (3) ties and monument

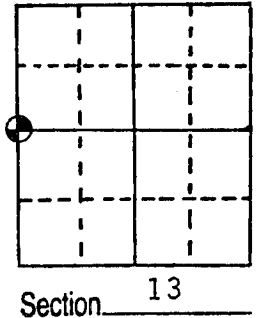


SCALE 1" = 30'

U.S. PUBLIC LAND SURVEY MONUMENT RECORD

Note: This form is intended and designed to fulfill all requirements of Wisconsin Administrative Code, Chapter A-E 5.02, U.S. Public Land Survey Monument Record (3) (a) (b) (c) (d) (e) (f) (g) (h) (i). An additional sheet may be added if necessary to conform with said requirements.

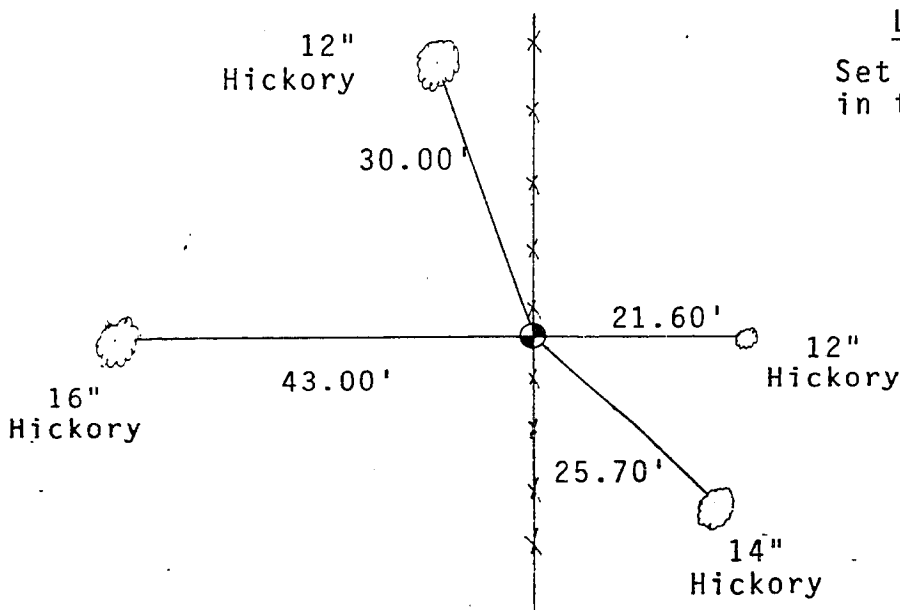
(a) Corner location: Township 6 North
 Range 4 ~~East~~ West
 Town/ ~~City/Village~~ Mount Hope
 County Grant



(b) (f) (g) (h) Description of monument found at this corner and if it was accepted, state all evidence (material, testimonial, occupational, plats, records, other monuments) used as a basis for accepting. If not accepted or if nothing was found, state evidence used as basis for establishing location. If reestablished through lost corner proportionate methods, indicate all monuments, distances and directions used to establish.

Found 1" iron pipe. Accepted as being corner set by Laurence E. Schmit 10-4-78.

(c) (d) (e) Plan view of corner with ties to at least 4 witness monuments. If in disagreement with previously established corner, show the distances between the two corners and also indicate the ties to the disputed corner.



LEGEND
 Set 60 penny spikes in trees.



Scale: 1" = 20'

(i) I, John M. HANVERSON
 (type or print name) certify that the corner location on this record was determined by me or under my direction and control and that this U.S. Public Land Survey Monument Record is correct and complete to the best of my knowledge and belief.

Affix seal here

John M. Hanverson Signature August 1, 1983 Date