

U.S. PUBLIC LAND SURVEY MONUMENT RECORD - GRANT COUNTY, WI

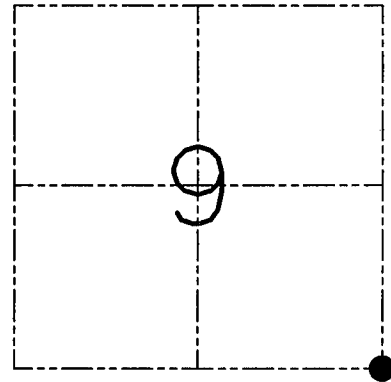
Section 9, Town 6 North Range 4 West, Town of Mount Hope

CERTIFICATE

I, Larry L. Austin, do hereby certify that the corner location on this record was determined by me and/or under my direct supervision and that this U.S. public land survey monument record is correct and complete to the best of my knowledge and belief.

Dated this 12th day of May, 2001

Larry L. Austin
Larry L. Austin S-1903



● = CORNER LOCATION

HISTORY OF CORNER ESTABLISHMENT

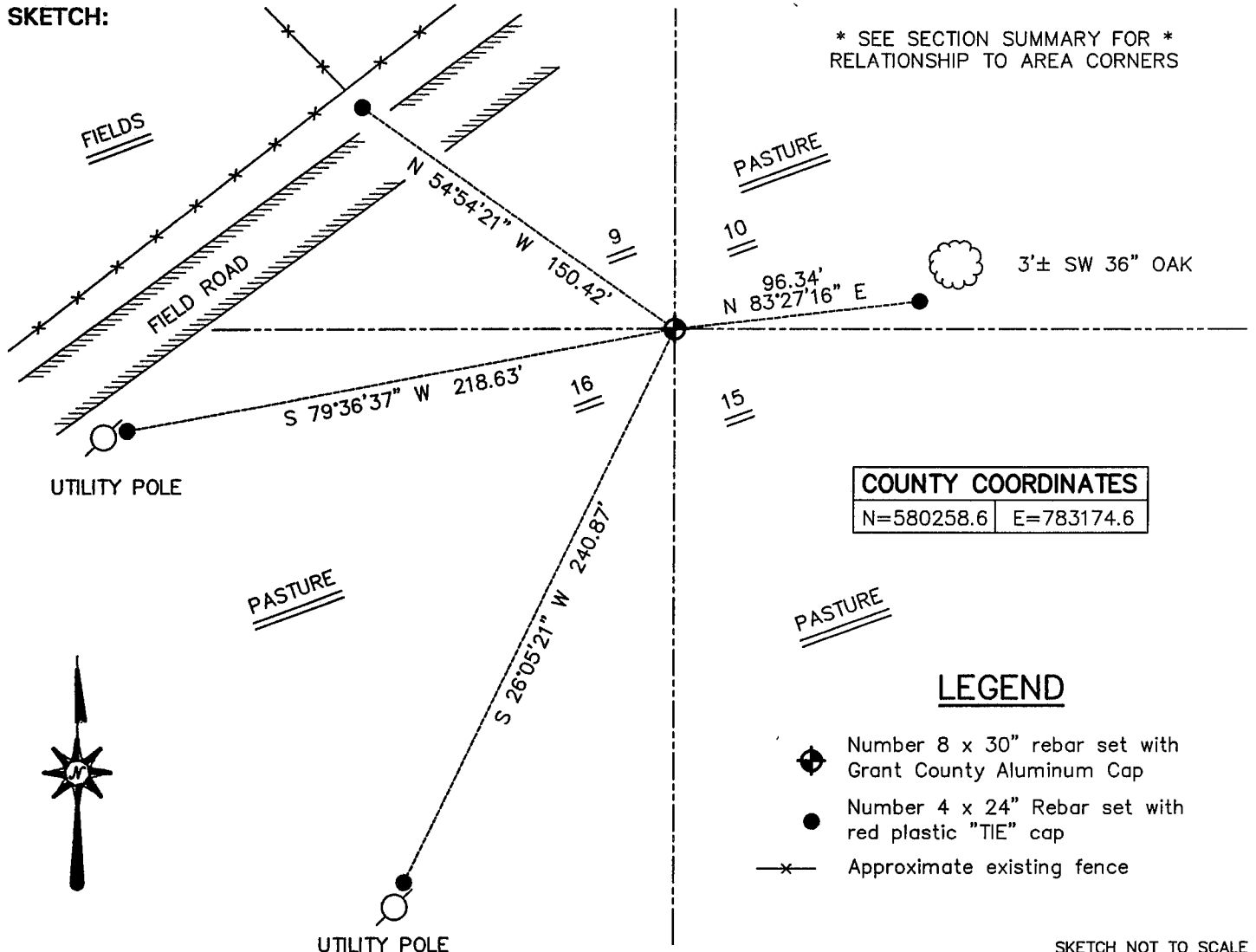
Corner was originally set in 1833 by Harvey Parke. In 1978 Schmit tied to the corner. No other record of the corner was found.

DESCRIPTION OF CORNER EVIDENCE FOUND

I retraced and accepted Schmit's location after an EDM & GPS traverse of the area.

DESCRIPTION OF CORNER AND WITNESS MONUMENTS, references and accessories used to perpetuate the original or re-established location of this corner. Witnesses to the corner location Bobby Sedgwick & Shelby Blindert & Tim Fauver

SKETCH:



* SEE SECTION SUMMARY FOR *
RELATIONSHIP TO AREA CORNERS

COUNTY COORDINATES	
N=580258.6	E=783174.6

LEGEND

- Number 8 x 30" rebar set with Grant County Aluminum Cap
- Number 4 x 24" Rebar set with red plastic "TIE" cap
- x— Approximate existing fence

SKETCH NOT TO SCALE

AUSTIN ENGINEERING, LLC

4211 HWY 81 EAST, LANCASTER, WI 53813
PHONE 608-723-6363 FAX 608-723-6702

FIELDBOOK: SDR33, 2007, 2009,
G:\T6NR4W\09
C:\SWA\TIE\T6NR4W\47
CREW: BS-SB-SA-TF

DRAWN BY: SW AUSTIN
APPROVED: LL AUSTIN

CORNER NUMBER 47