

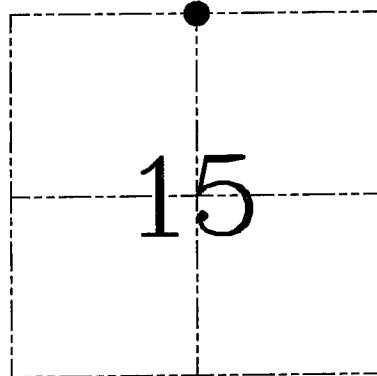
**U.S. PUBLIC LAND SURVEY MONUMENT RECORD – GRANT COUNTY, WI**  
**Section 15, Town 6 North Range 4 West, Town of Mount Hope**

CERTIFICATE

I, Larry L. Austin, do hereby certify that the corner location on this record was determined by me and/or under my direct supervision and that this U.S. public land survey monument record is correct and complete to the best of my knowledge and belief.

Dated this 28th day of December, 2005

*Larry L. Austin*  
 Larry L. Austin  
 S-1903  
 S-1903  
 LANCASTER  
 WI  
**LAND SURVEYOR**



● = CORNER LOCATION

HISTORY OF CORNER ESTABLISHMENT

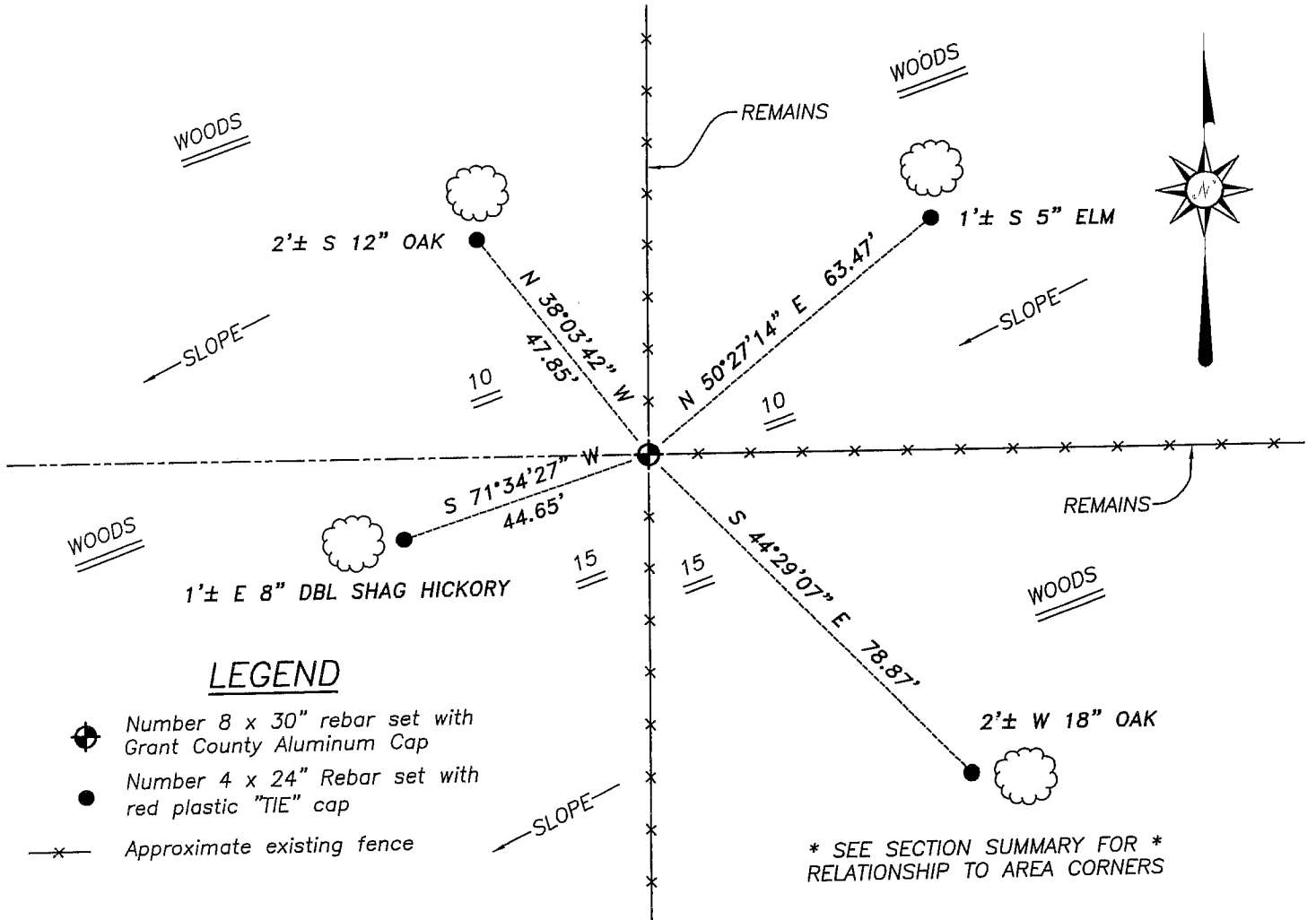
Corner was originally set in 1833 by Parke. Schmit proportioned the corner between the Northeast and Northwest corners with no mention of monument.

DESCRIPTION OF CORNER EVIDENCE FOUND

I was unable to locate any evidence to the Schmit location. I found and accepted an existing three way fence location after an EDM & GPS traverse of the area.

DESCRIPTION OF CORNER AND WITNESS MONUMENTS, references and accessories used to perpetuate the original or re-established location of this corner. Witnesses to corner location Bobby Sedgwick & Brad Digman & Shane Austin

**SKETCH:**

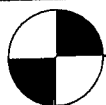


LEGEND

- Number 8 x 30" rebar set with Grant County Aluminum Cap
- Number 4 x 24" Rebar set with red plastic "TIE" cap
- x— Approximate existing fence

\* SEE SECTION SUMMARY FOR \*  
 RELATIONSHIP TO AREA CORNERS

SKETCH NOT TO SCALE



**Austin**  
**Engineering LLC**

4211 HWY 81 E, LANCASTER, WI 53813  
 PHONE 608-723-6363 FAX 608-723-6702

JOB NUMBER: 05S298  
 FIELDBOOK: TDSR, 2516  
 G:\T7NR4W\133  
 H:\TIE\T6NR4W\46

DRAWN BY: ML DIGMAN  
 APPROVED: LL AUSTIN