

**U.S. PUBLIC LAND SURVEY MONUMENT RECORD – GRANT COUNTY, WI**

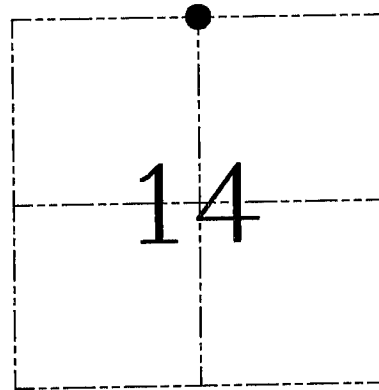
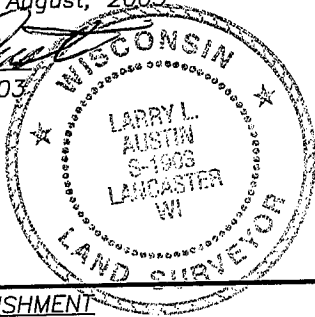
**Section 14, Town 6 North Range 4 West, Town of Mount Hope**

CERTIFICATE

I, Larry L. Austin, do hereby certify that the corner location on this record was determined by me and/or under my direct supervision and that this U.S. public land survey monument record is correct and complete to the best of my knowledge and belief.

Dated this 1st day of August, 2005

*Larry L. Austin*  
Larry L. Austin S-1903



● = CORNER LOCATION

HISTORY OF CORNER ESTABLISHMENT

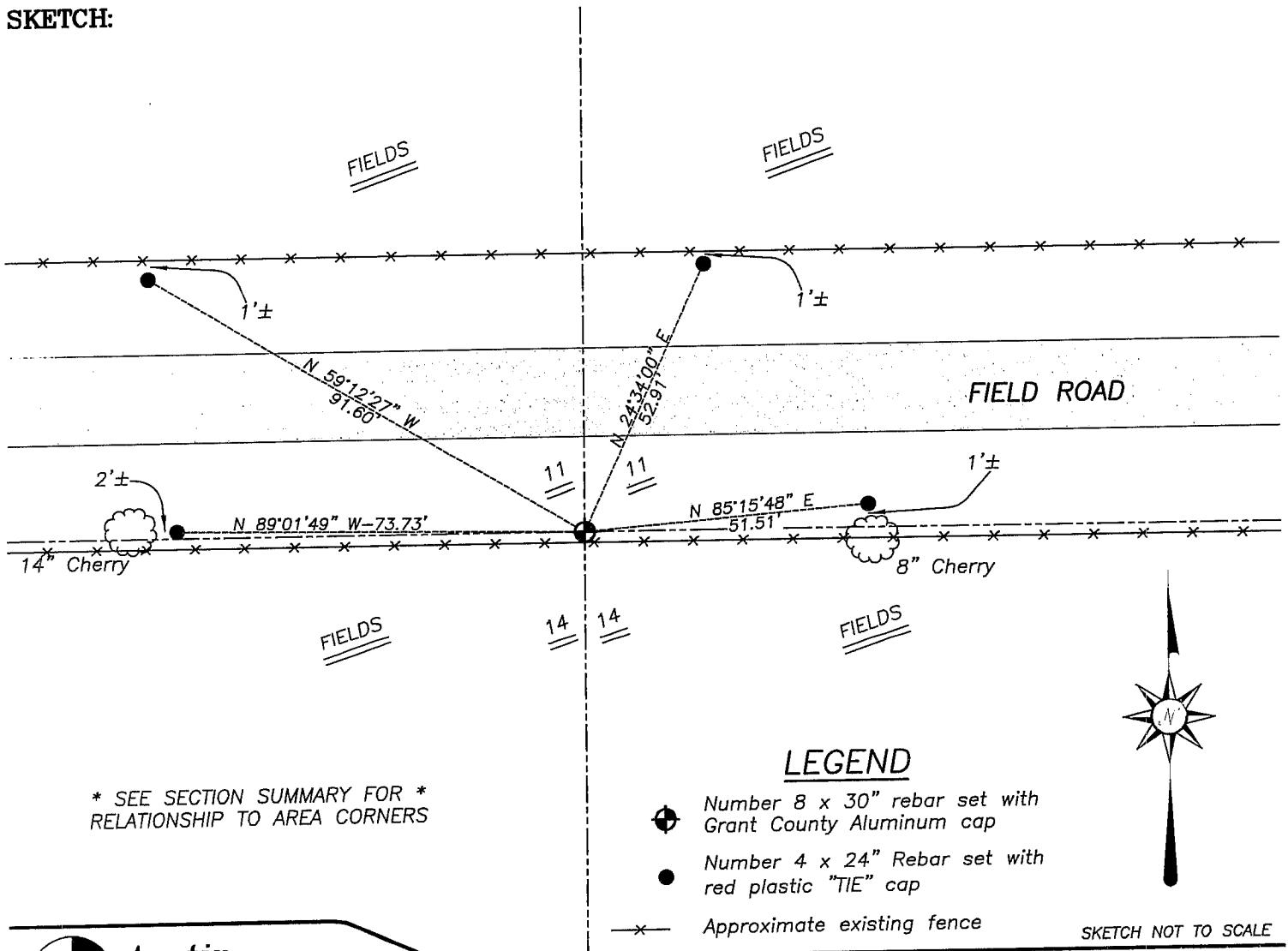
Corner was originally set in 1833 by Parke.  
No other record of the corner was found.

DESCRIPTION OF CORNER EVIDENCE FOUND

I reset the corner proportionately between the Northwest and Northeast corners for Easting. Northing was established using the existing East-West fence. Verified this location using EDM & GPS methods.

DESCRIPTION OF CORNER AND WITNESS MONUMENTS, references and accessories used to perpetuate the original or re-established location of this corner. Witnesses to corner location Bobby Sedgwick & Brad Digman & Shane Austin

**SKETCH:**



\* SEE SECTION SUMMARY FOR \*  
RELATIONSHIP TO AREA CORNERS



**Austin**

**Engineering LLC**

4211 HWY 81 E, LANCASTER, WI 53813  
PHONE 608-723-6363 FAX 608-723-6702

JOB NUMBER 05S114  
FIELDBOOK: TDSR, 2516  
G:\T6NR4W\14  
H:\TIE\T6NR4W\44

DRAWN BY: BJ HAZEN  
APPROVED: LL AUSTIN