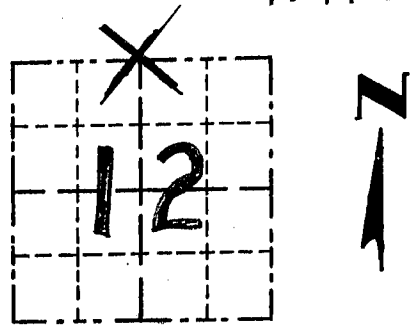


GRANT COUNTY

Survey Monument Record

TYPE OF MONUMENT 1 1/2" IRON PIPE FOUND
 STATE PLANE COORDINATES: N _____
 E _____
 ELEVATION — M.S.L. DATUM: _____
 THETA ANGLE: _____
 FIELD BOOK: 95-06
 PAGE 14

CORNER NO. 22
 SECTION 12
 TOWN 6N
 RANGE 4W
N 1/4 COR.



LOCATION
(Indicated by "X")

BASIS FOR MONUMENT LOCATION

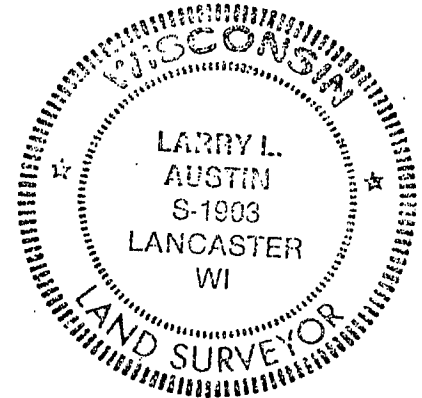
(Use reverse side if necessary)

Show info such as: History of corner, with reference to Vol. and pg., dates, surveyor; exact description of monument replaced; if location computed, by taped or EDM traverse; landowner, remarks, etc.

PARKE
1833

SEAL:

CORNER ORIGINALLY SET IN 1833
 BY PARKE; NO RECORD OF CORNER
 FOUND SINCE ORIGINAL SURVEYS.
 I SET THE CORNER AT
 OCCUPIED LOCATION AFTER
 VERIFICATION BY EDM
 TRAVERSE



CERTIFIED CORRECT

Larry L. Austin
 Registered Land Surveyor

DATE: 4/20/95

TIE SKETCH

Show at least three (3) ties and monument

