

# U.S. PUBLIC LAND SURVEY MONUMENT RECORD - GRANT COUNTY, WI

Section 5, Town 6 North Range 4 West, Town of Woodman (a)

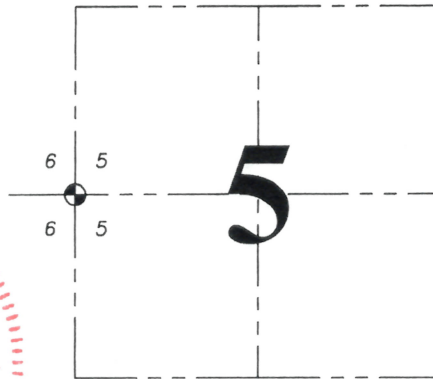
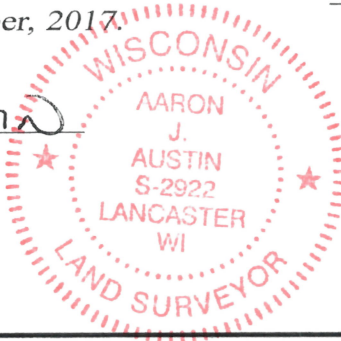
NOTE: This form is intended and designed to fulfill all requirements of the Wisconsin Administrative Code Chapter A-E 7.08, U.S. Public Land Survey Monument Record (3) (a) (b) (c) (d) (e) (f) (g) (h) (i).

**CERTIFICATE:** (i)

I, Aaron J. Austin, Wisconsin Professional Land Surveyor, do hereby certify that the corner location on this record was determined by me and/or under my direct supervision and that this U.S. Public Land Survey Monument Record is correct and complete to the best of my knowledge and belief.

Dated this 10th day of November, 2017.

*Aaron J. Austin*  
Aaron J. Austin, S-2922



● = CORNER LOCATION

HISTORY OF CORNER ESTABLISHMENT:

Original corner was set in by Harvey Parke in March, 1833.  
Larry Austin reset the corner and prepared a Survey Monument Record dated 1-18-1999.

DESCRIPTION OF CORNER EVIDENCE FOUND: (b) (f) (g) (h)

I found the 1" rebar with Grant County Aluminum Cap as set by Larry Austin. I set four new witness corners after I verified the corner's location with G.P.S. and E.D.M. methods

DESCRIPTION OF CORNER AND WITNESS MONUMENTS, references and accessories used to perpetuate the original or re-established location of this corner. (c) (d) (e)  
Witnesses to corner location Shane Austin, Aaron Austin.

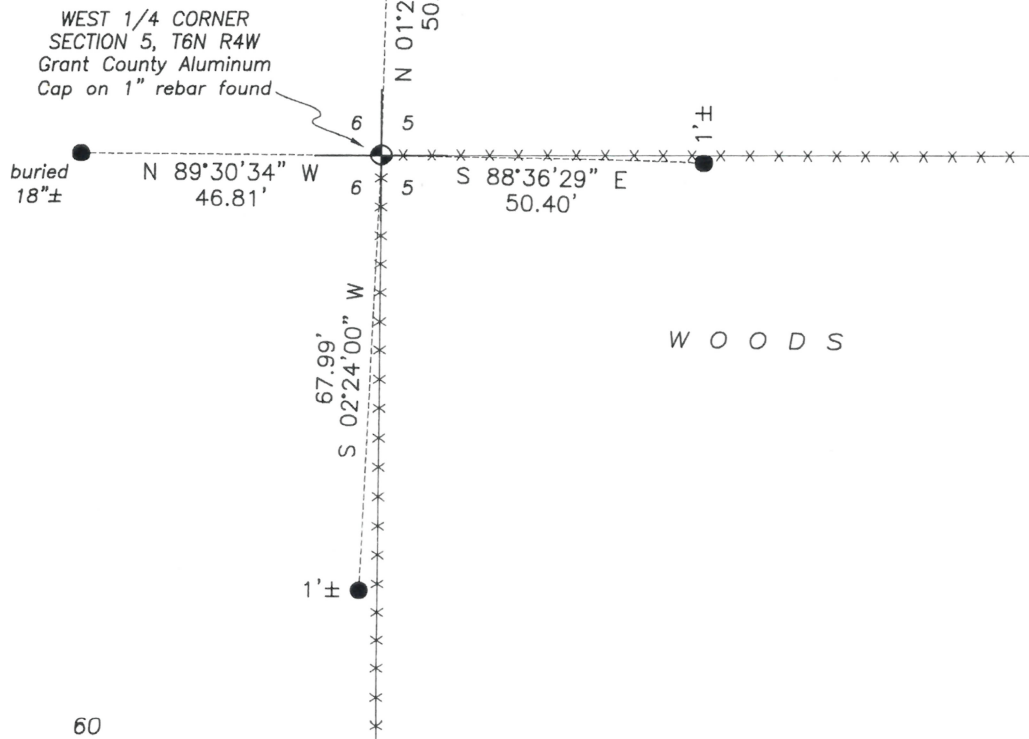
SKETCH:

## LEGEND

- Section Corner—as designated
- 3/4" x 18" rebar set
- ⊙ Existing tree
- x-x- Existing fence

FIELD

WOODS



SCALE 1" = 30'