

# GRANT COUNTY CERTIFIED LAND CORNER

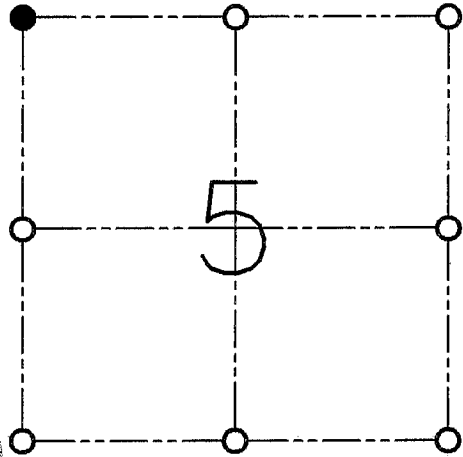
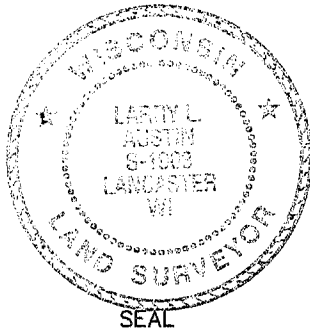
CORNER NO. 11

**CERTIFICATE:**

I, LARRY L. AUSTIN, DO HEREBY CERTIFY THAT ON TWELFTH OF JANUARY, 1999, I FOUND OCCUPATIONAL EVIDENCE OF THE NORTHWEST CORNER OF SECTION 5, TOWN 6 NORTH, RANGE 4 WEST, OF THE FOURTH PRINCIPAL MERIDIAN, AND I RE-ESTABLISHED SAID CORNER ACCORDING TO THE WISCONSIN STATUTES AS SHOWN AND DESCRIBED HEREON.

DATED THIS EIGHTEENTH DAY OF JANUARY, 1999

*Larry L. Austin*  
LARRY L. AUSTIN S-1903



● = CORNER LOCATION

**NORTHWEST CORNER SECTION 5  
T 6 N R 4 W  
TOWN OF WOODMAN**

**HISTORY OF ORIGINAL CORNER ESTABLISHMENT:**

CORNER WAS SET IN 1833 BY HARVEY PARKE.

**DESCRIPTION OF CORNER EVIDENCE FOUND:**

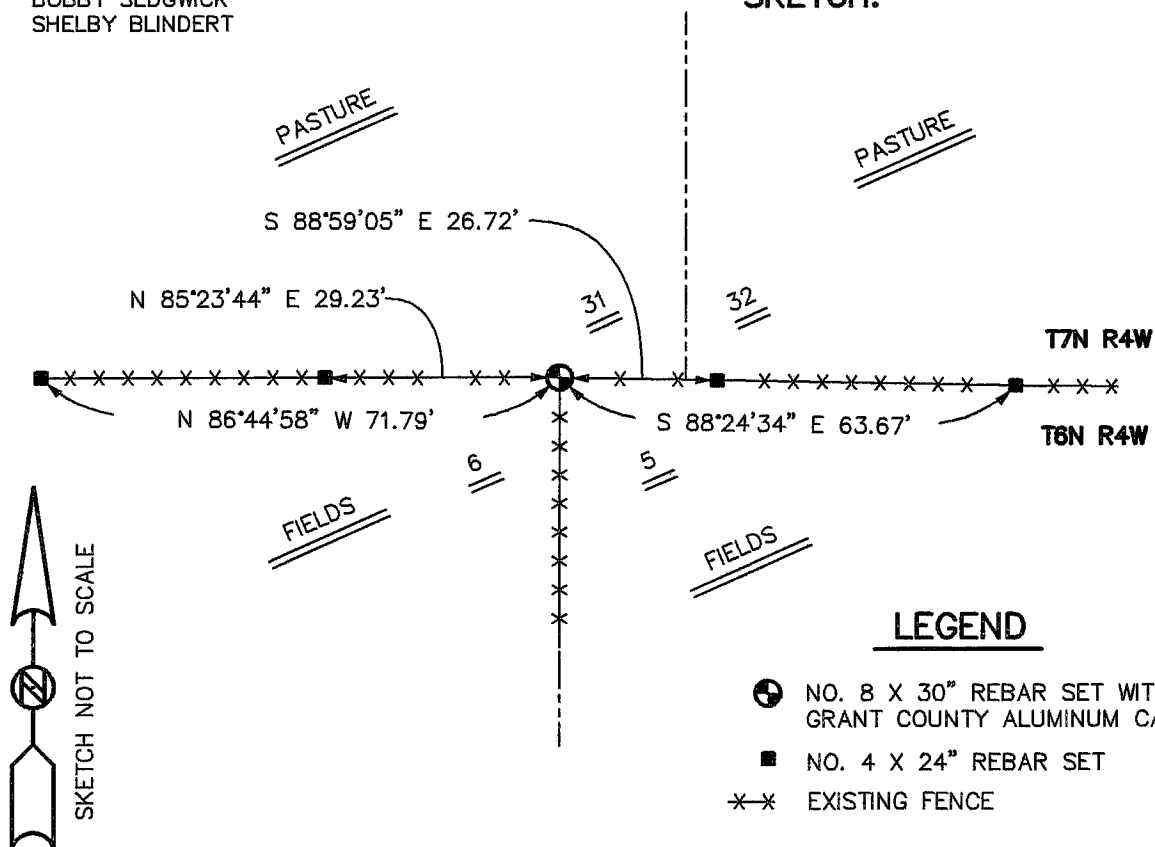
CORNER WAS SET AT AN OCCUPIED FENCE CORNER. THIS LOCATION FIT WELL WITH CORNERS IN THE AREA. VERIFIED THIS LOCATION USING E.D.M. AND G.P.S. METHODS.

**DESCRIPTION OF CORNER AND WITNESS MONUMENTS, REFERENCES AND ACCESSORIES USED TO PERPETUATE THE ORIGINAL OR RE-ESTABLISHED LOCATION OF THIS CORNER:**

**WITNESS TO THE CORNER LOCATION:**

BOBBY SEDGWICK  
SHELBY BLINDERT

**SKETCH:**



**LEGEND**

- ⊕ NO. 8 X 30" REBAR SET WITH GRANT COUNTY ALUMINUM CAP
- NO. 4 X 24" REBAR SET
- \*-\* EXISTING FENCE