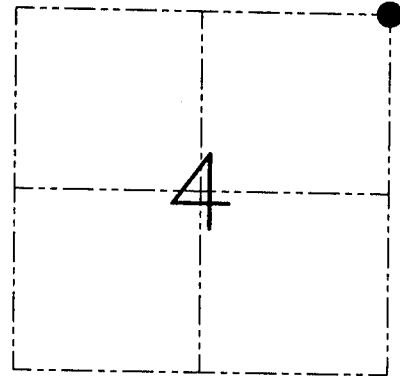
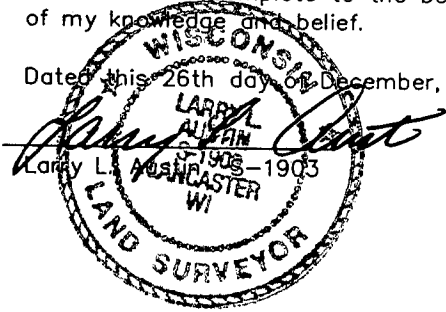


U.S. PUBLIC LAND SURVEY MONUMENT RECORD - GRANT COUNTY, WI
 Section 4, Town 6 North Range 4 West, Town of Woodman

CERTIFICATE

I, Larry L. Austin, do hereby certify that the corner location on this record was determined by me and/or under my direct supervision and that this U.S. public land survey monument record is correct and complete to the best of my knowledge and belief.

Dated this 26th day of December, 2001



● = CORNER LOCATION

HISTORY OF CORNER ESTABLISHMENT

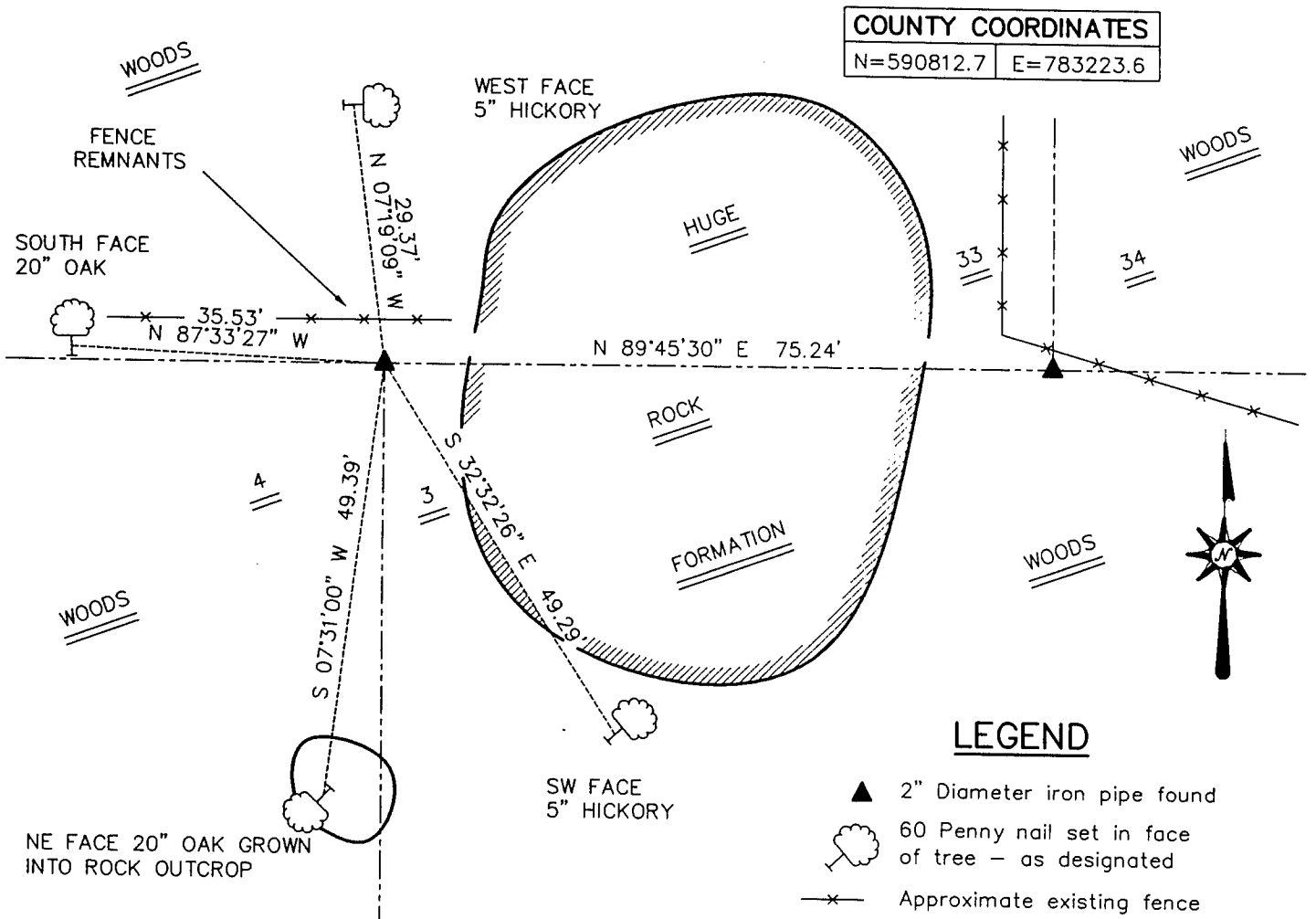
Corner was originally set in 1833 by Harvey Parke.
 In 1979 Lampman set a 2" iron pipe at this location.

DESCRIPTION OF CORNER EVIDENCE FOUND

I found the 2" iron pipe and accepted it's location after an EDM & GPS traverse of the area.

DESCRIPTION OF CORNER AND WITNESS MONUMENTS, references and accessories used to perpetuate the original or re-established location of this corner. Witnesses to the corner location Bobby Sedgwick & Shane Austin

SKETCH:



COUNTY COORDINATES	
N=590812.7	E=783223.6

LEGEND

- ▲ 2" Diameter iron pipe found
- ☁ 60 Penny nail set in face of tree - as designated
- x— Approximate existing fence

SKETCH NOT TO SCALE

AUSTIN ENGINEERING, LLC

4211 HWY 81 EAST, LANCASTER, WI 53813
 PHONE 608-723-6363 FAX 608-723-6702

FIELDBOOK: SDR33, 2110

G:\T7NR4W\133

C:\SWA\TIE\T7NR4W\07

CREW: BS-SB-SA-BD

DRAWN BY: SW AUSTIN

APPROVED: LL AUSTIN

CORNER NUMBER 07