

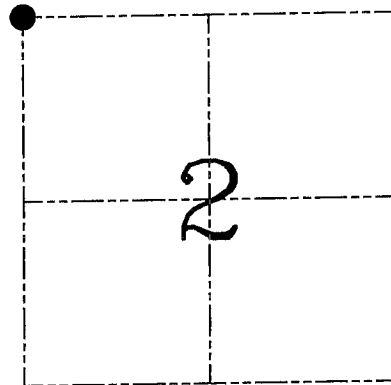
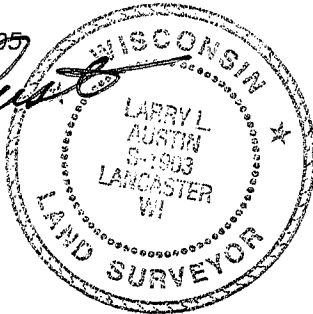
**U.S. PUBLIC LAND SURVEY MONUMENT RECORD – GRANT COUNTY, WI**  
**Section 2, Town 6 North Range 4 West, Town of Mount Hope**

CERTIFICATE

I, Larry L. Austin, do hereby certify that the corner location on this record was determined by me and/or under my direct supervision and that this U.S. public land survey monument record is correct and complete to the best of my knowledge and belief.

Dated this 7th day of June, 2005

*Larry L. Austin*  
 Larry L. Austin S-1903



● = CORNER LOCATION

HISTORY OF CORNER ESTABLISHMENT

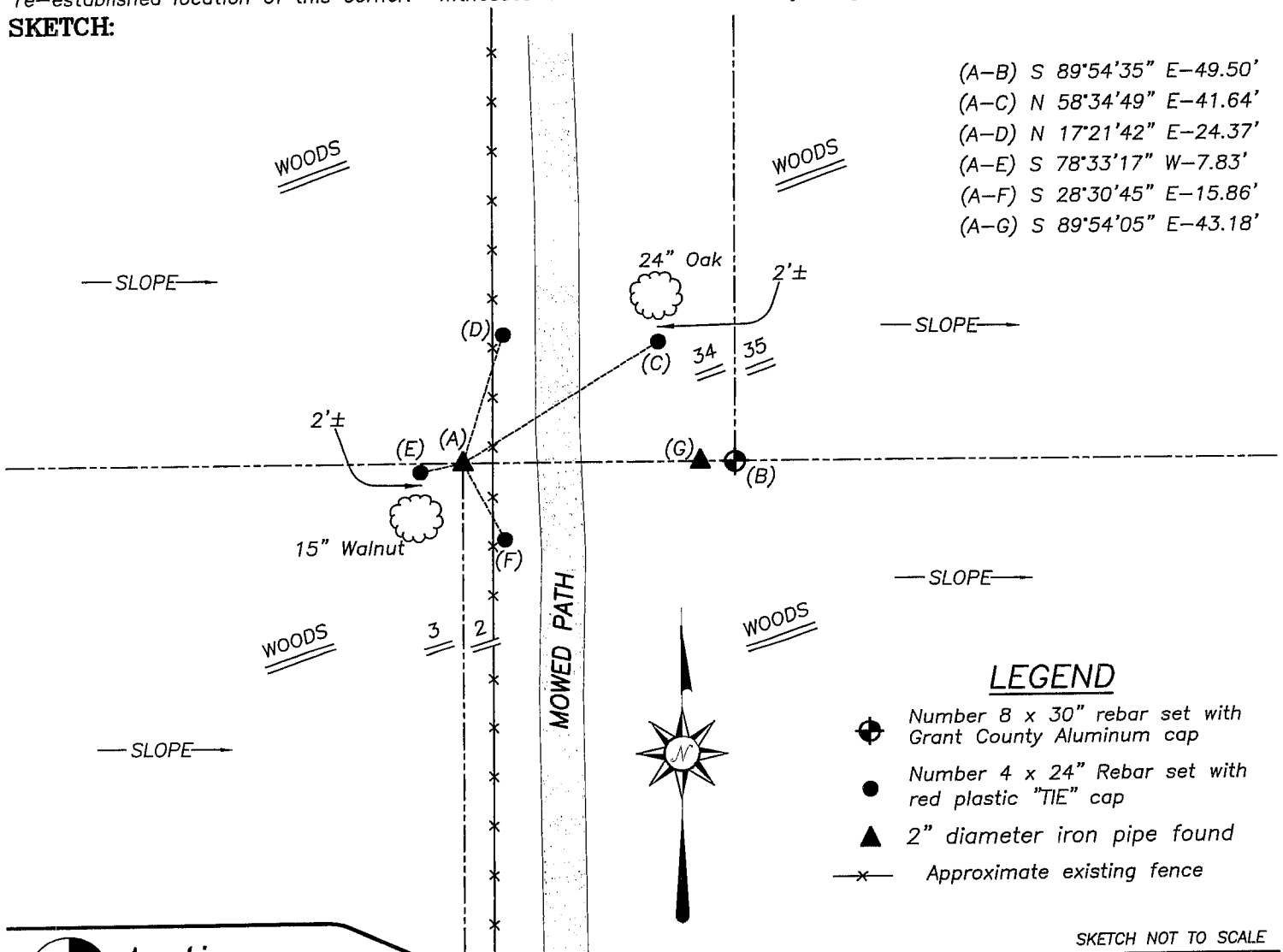
Corner was originally set in 1833 by Parke. In 1978 Lampman set a 2" iron pipe. No other record of the corner was found.

DESCRIPTION OF CORNER EVIDENCE FOUND

I found the 2" iron pipe and accepted it's location after an EDM & GPS traverse of the area.

DESCRIPTION OF CORNER AND WITNESS MONUMENTS, references and accessories used to perpetuate the original or re-established location of this corner. Witnesses to corner location Bobby Sedgwick & Brad Digman & Shane Austin

**SKETCH:**



- (A-B) S 89°54'35" E-49.50'
- (A-C) N 58°34'49" E-41.64'
- (A-D) N 17°21'42" E-24.37'
- (A-E) S 78°33'17" W-7.83'
- (A-F) S 28°30'45" E-15.86'
- (A-G) S 89°54'05" E-43.18'

**LEGEND**

- ⊕ Number 8 x 30" rebar set with Grant County Aluminum cap
- Number 4 x 24" Rebar set with red plastic "TIE" cap
- ▲ 2" diameter iron pipe found
- × Approximate existing fence

SKETCH NOT TO SCALE

**Austin Engineering LLC**  
 4211 HWY 81 E, LANCASTER, WI 53813  
 PHONE 608-723-6363 FAX 608-723-6702

JOB NUMBER 05S139  
 FIELDBOOK: TDSR, 2511  
 G:\T7NR4W\133  
 H:\TIE\T6NR4W\5

DRAWN BY: BJ HAZEN  
 APPROVED: LL AUSTIN