

64002

U.S. PUBLIC LAND SURVEY MONUMENT RECORD - GRANT COUNTY, WI

Section 1, Town 6 North Range 4 West, Town of Woodman (a)

NOTE: This form is intended and designed to fulfill all requirements of the Wisconsin Administrative Code Chapter A-E 7.08, U.S. Public Land Survey Monument Record (3) (a) (b) (c) (d) (e) (f) (g) (h) (i).

CERTIFICATE: (i)

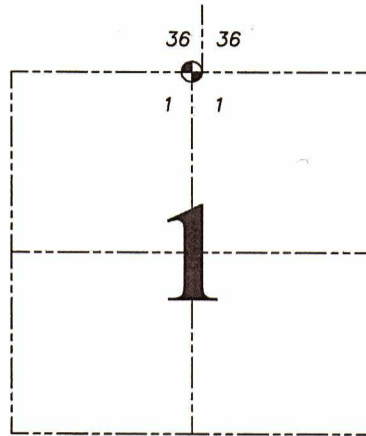
I, Aaron J. Austin, Wisconsin Professional Land Surveyor, do hereby certify that the corner location on this record was determined by me and/or under my direct supervision and that this U.S. Public Land Survey Monument Record is correct and complete to the best of my knowledge and belief.

Dated this 22nd day of January, 2021.

Aaron J. Austin

Aaron J. Austin, S-2922

Grant County Coordinates:
NAD 83 (2011)
Northing: 590,839.67
Easting: 796,495.14



⊕ = CORNER LOCATION

HISTORY OF CORNER ESTABLISHMENT:

Corner was not set with original survey.

DESCRIPTION OF CORNER EVIDENCE FOUND: (b) (f) (g) (h)

I set the corner equidistant between the Northeast corner and Northwest corner of Section 1 on the South line of Section 36, T7N R4W. Corner location was verified with G.P.S. and E.D.M. methods

DESCRIPTION OF CORNER AND WITNESS MONUMENTS, references and accessories used to perpetuate the original or re-established location of this corner. (c) (d) (e)

Witnesses to corner location Shane Austin, Owen Austin.
Drawn by Owen Austin

SKETCH:

LEGEND

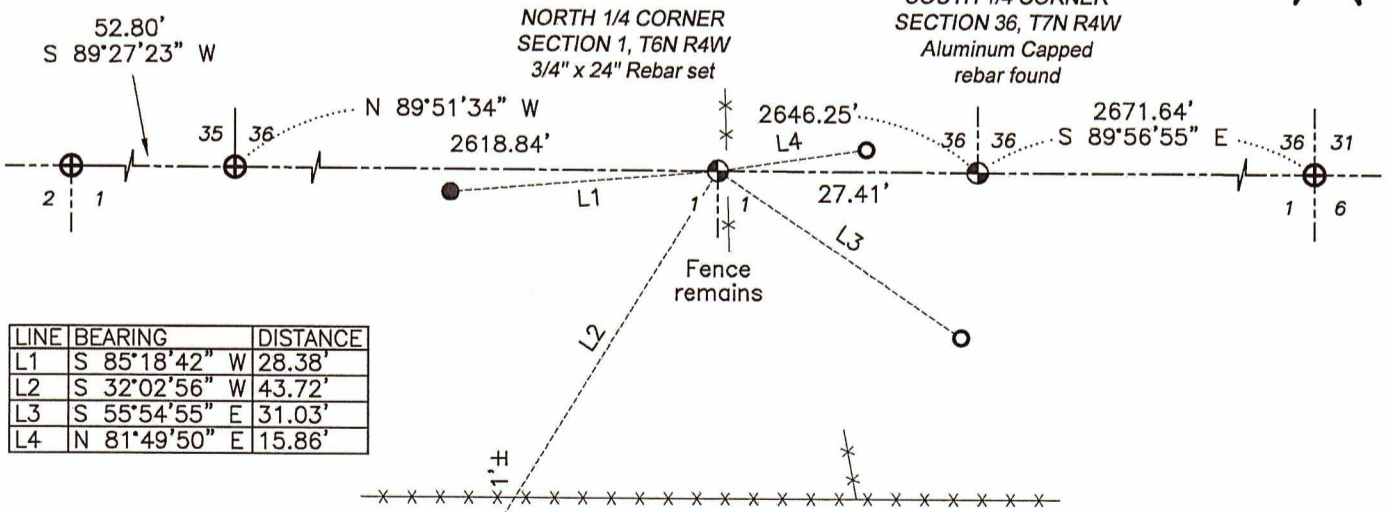
- ⊕ Section Corner—as designated
- 1/2" rebar found
- 3/4" x 18" rebar set
- ⊕ Aluminum Capped rebar
- x-x-x- Existing fence

WOODS

T7N R4W

SLOPE

SLOPE



LINE	BEARING	DISTANCE
L1	S 85°18'42" W	28.38'
L2	S 32°02'56" W	43.72'
L3	S 55°54'55" E	31.03'
L4	N 81°49'50" E	15.86'

WOODS

T6N R4W

