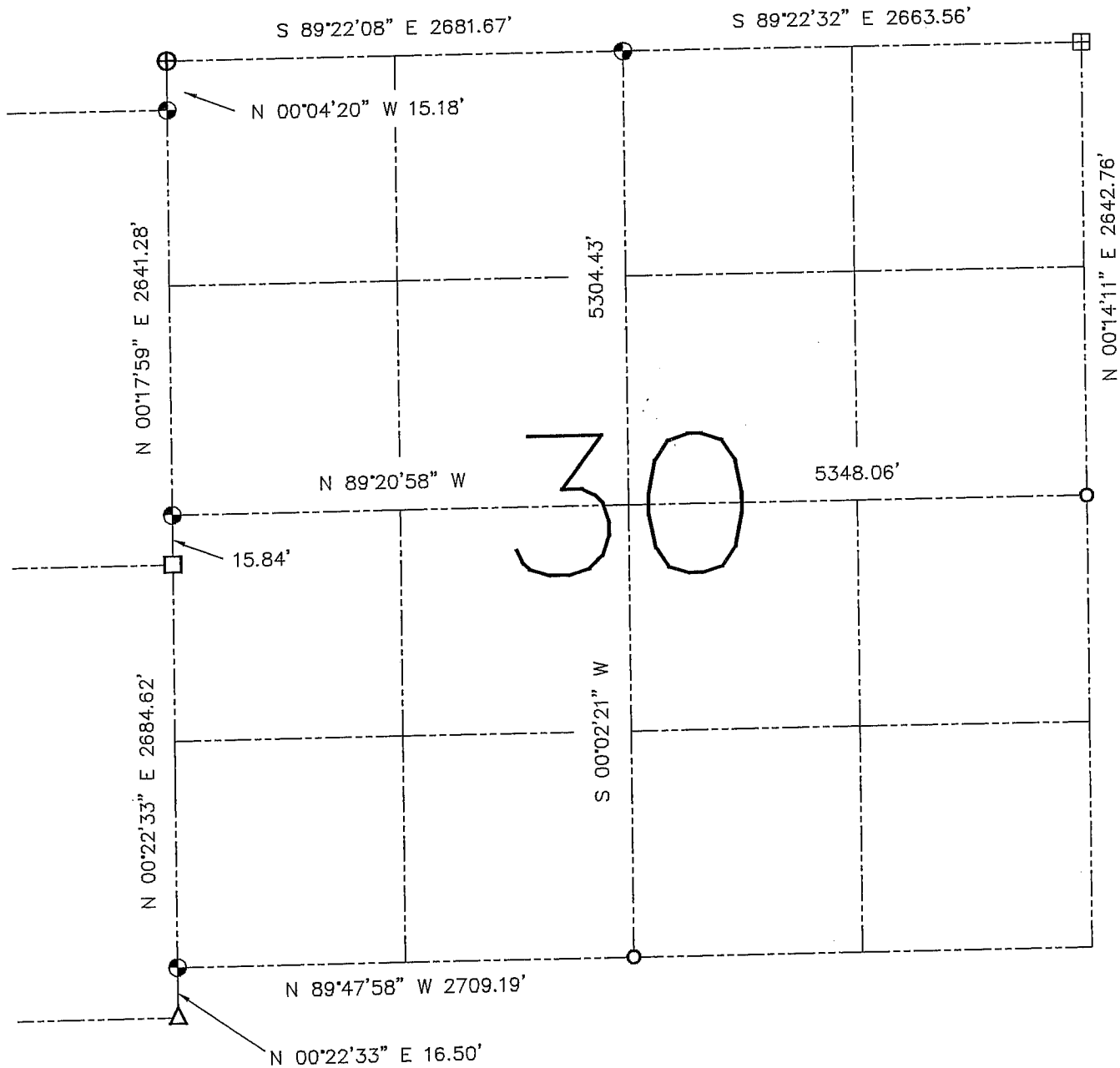


U.S. PUBLIC LAND SURVEY MONUMENT RECORD – GRANT COUNTY, WI
Summary of Section 30, Town 6 North, Range 3 West, Town of Mount Ida

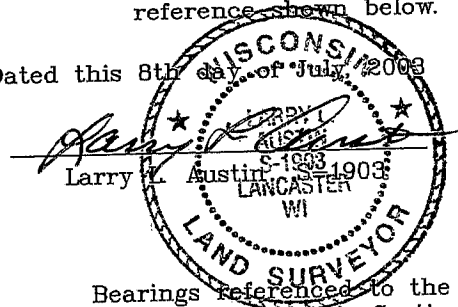


LEGEND

- ⊕ Aluminum monument found with DOT Aluminum cap
- No. 8 x 30" rebar set with Grant County Aluminum Cap - wt=2.67#/l.f.
- No. 6 rebar found
- No. 10 rebar found
- ⊞ Aluminum monument found
- △ 1" diameter iron pipe found

Relationship of all section corners to other section corners shall be shown hereon by bearing and distance or grid coordinates. Bearing reference shown below.

Dated this 8th day of July, 2008



Bearings referenced to the East-West Quarter line of this Section, which is assumed to bear as shown hereon.

SKETCH NOT TO SCALE

AUSTIN ENGINEERING, LLC

4211 HWY 81 EAST, LANCASTER, WI 53813
 PHONE 608-723-6363 FAX 608-723-6702

FIELDBOOK: TDS RNGR, 2218
 G: \T6NR3W\30A
 H: \TIE\T6NR3W\30SUM

DRAWN BY: SW AUSTIN
 APPROVED: LL AUSTIN
 JOB NUMBER 03S195