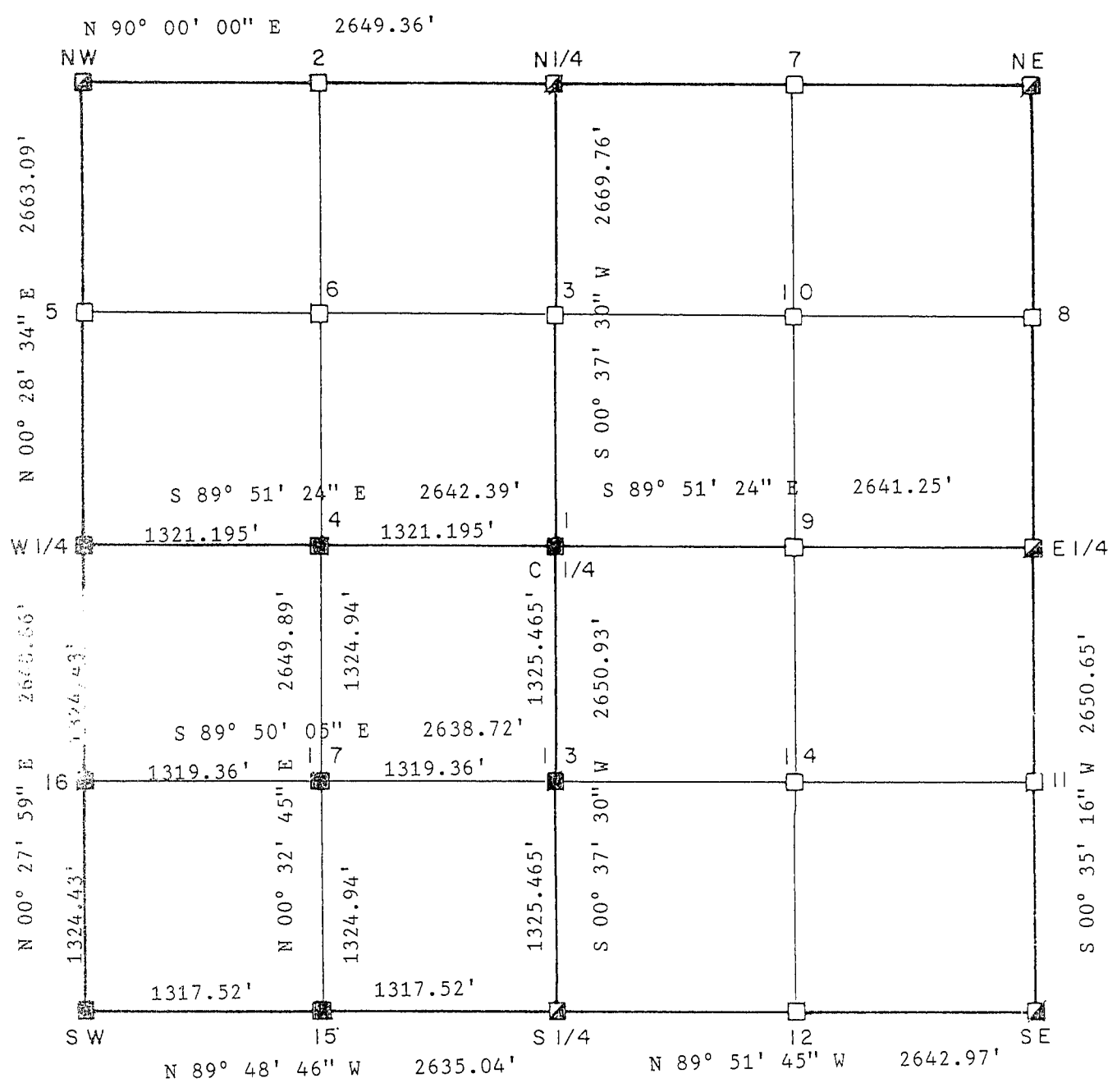


GRANT COUNTY SECTION SURVEY DATA DEC 27 1990



■ CORNERS RESTORED
 ☒ CORNERS FOUND RESTORED

Bearing system used: Assumed

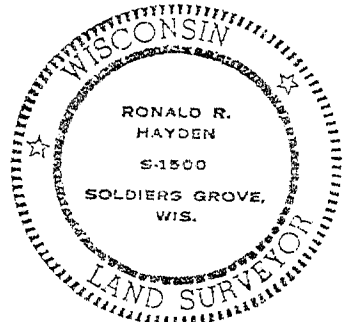
Town 6 North, Range 3 West
 Section 26

Surveyed by: Ronald R. Hayden, RLS-1500

Date: 11/5/1990

Notes: 3/4" X 30" iron rebars were set at the following corners: Corner #4, #13, #15, #16, and #17. Upside/down steel fence post were set next to the following corners: Corner # 4, #15, and #16.

SURVEYORS SEAL & SIGNATURE



Ronald R. Hayden

 Page No. _____

0/101