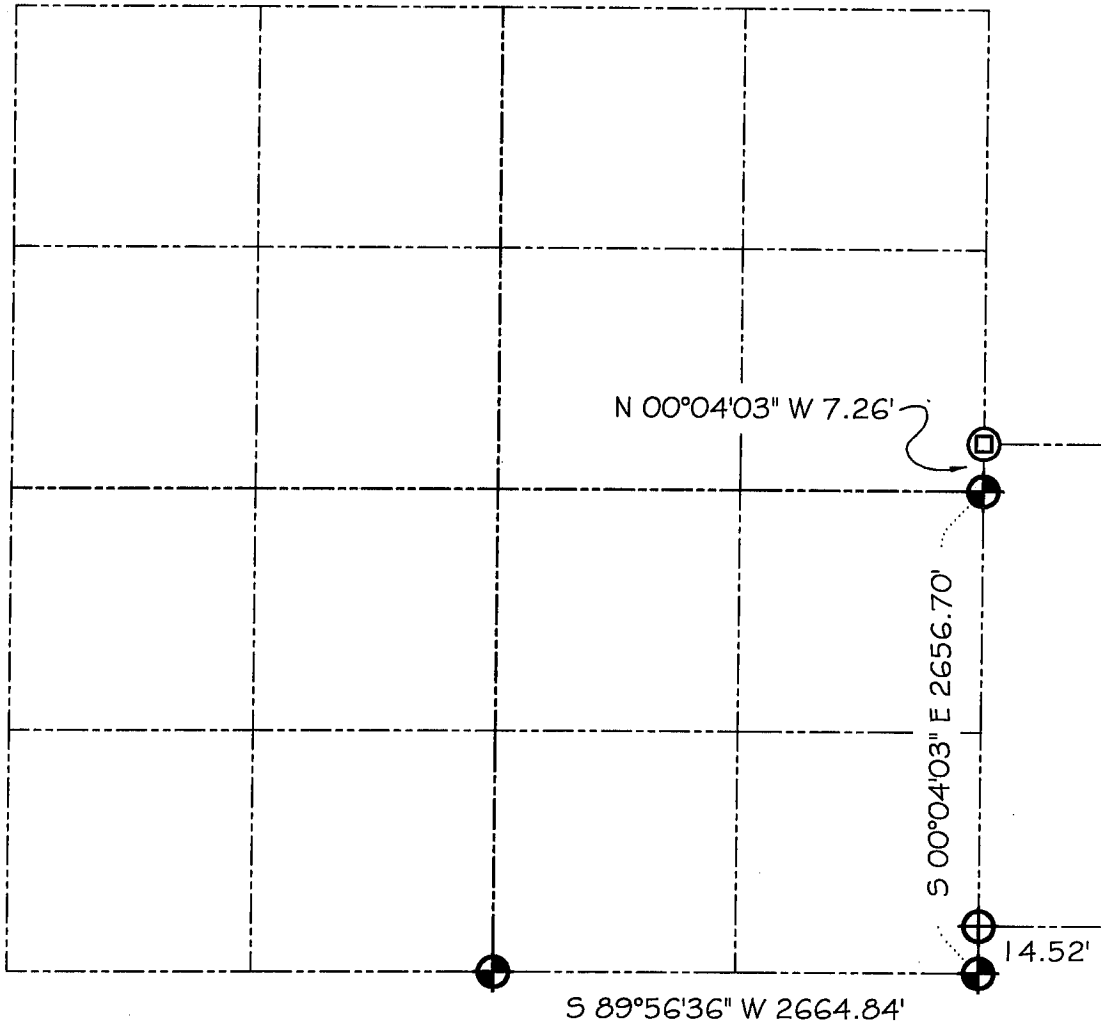





DEC 11 2000

GRANT COUNTY SECTION SUMMARY

24 - 6N - 3W
SECTION TOWN RANGE

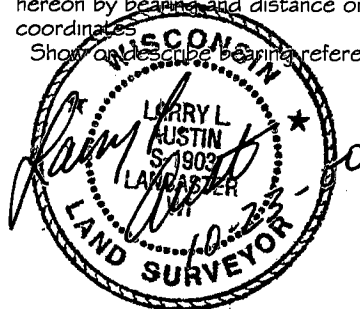


LEGEND

-  NO. 8 X 30" REBAR SET WITH GRANT COUNTY ALUMINUM CAP
-  ALUMINUM MONUMENT FOUND
-  NO. 5 IRON BAR FOUND

NOTE:

Relationships of all section corners to other section corners shall be shown hereon by bearings and distance or grid coordinates.
Show or describe bearing reference



BEARINGS REFERENCED TO THE SOUTH LINE OF THE SOUTHEAST QUARTER, WHICH IS ASSUMED TO BEAR S 89°56'36" W.