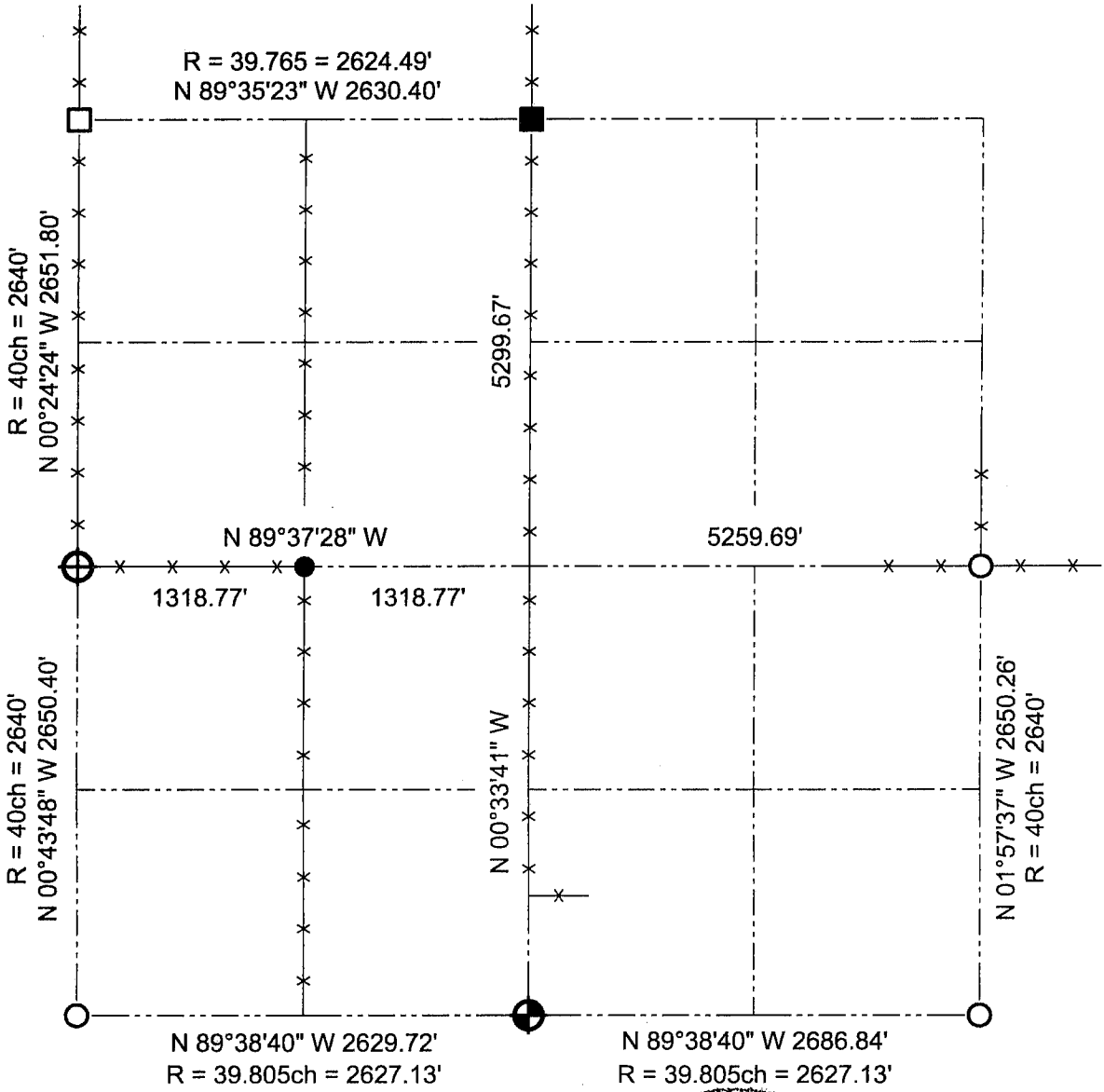


GRANT COUNTY SECTION SUMMARY

16 - 6N - 3W
SECTION TOWN RANGE



LEGEND

- Number 8 x 30" rebar set with Grant County Aluminum Cap
- Number 6 x 24" rebar set with yellow plastic survey cap
- Number 8 rebar found
- Number 6 rebar found
- 1 1/2" dia Iron pipe found
- 2" dia Iron pipe post in concrete



Relationships of all section corners to other section corners shall be shown hereon by bearing and distance or grid coordinates.
 ~Bearing reference below~



Bearings referenced to the West line of the NW Quarter of Section 16, which is assumed to bear N 00°24'24" W.

AUSTIN ENGINEERING, LLC
 4211 HWY 81 E, LANCASTER, WI 53813
 PHONE 608-723-6363 FAX 608-723-6702

FIELDBOOK: SDR33, 2037
 G:\T6NR3W\09
 C:\SC14\SWA\TIE\T6NR3W\16SUM

DRAWN BY: SW AUSTIN
 APPROVED: LL AUSTIN
 CREW: BS - SB - SA - TF