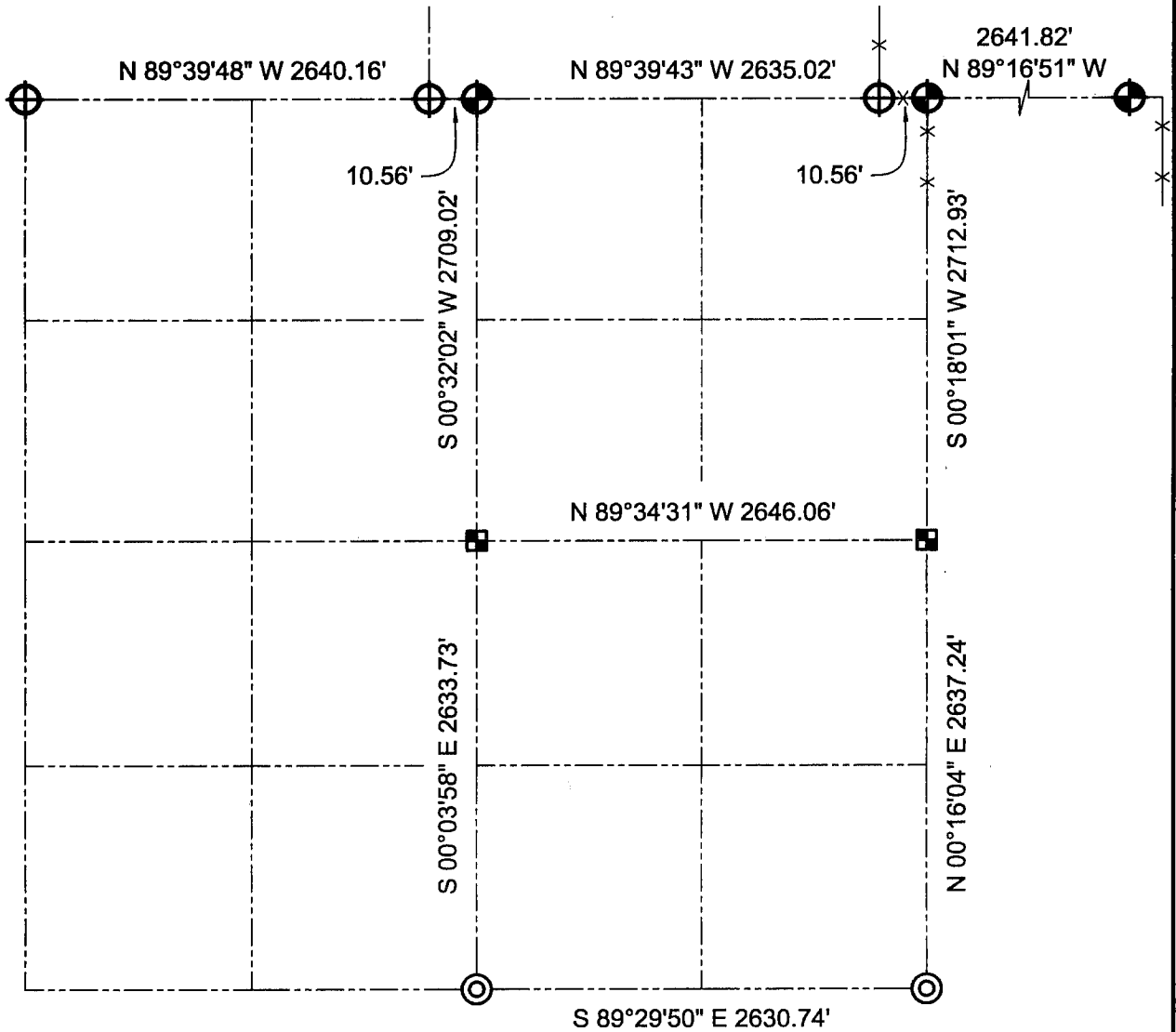


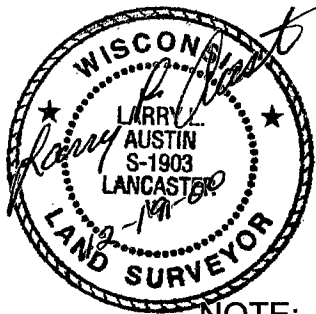
GRANT COUNTY SECTION SUMMARY

6
SECTION
- 6N
TOWN
3W
RANGE



LEGEND

- Number 8 x 30" rebar set with Grant County Aluminum Cap
- Number 8 rebar found with Grant County Aluminum Cap
- Number 6 rebar found with Grant County Aluminum Cap
- Number 10 rebar found



NOTE:

Relationships of all section corners to other section corners shall be shown hereon by bearing and distance or grid coordinates.
~Bearing reference below~



Bearings referenced to the South line of the Southeast Quarter of Section 6, which is assumed to bear S 89°29'50" E.

AUSTIN ENGINEERING, LLC
4211 HWY 81 E, LANCASTER, WI 53813
PHONE 608-723-6363 FAX 608-723-6702

FIELDBOOK: SDR33, 9914
G:\T7NR3W\19
C:\SC14\SWA\T6NR3W\06SUM

DRAWN BY: SW AUSTIN
APPROVED: LL AUSTIN
CREW: BS - SB - SA - TF