

U.S. PUBLIC LAND SURVEY MONUMENT RECORD - GRANT COUNTY, WI

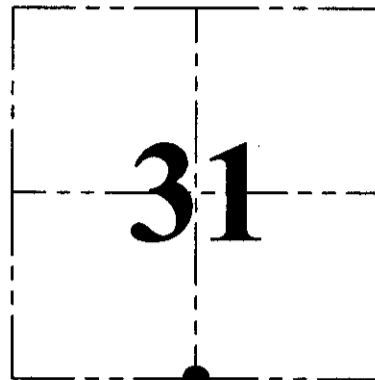
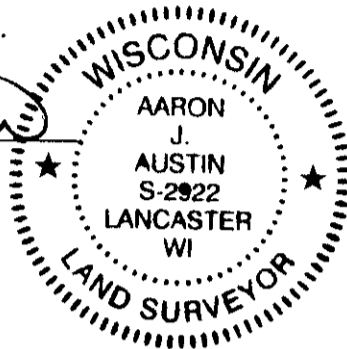
Section 31, Town 6 North Range 3 West, Town of Mount Ida

CERTIFICATE:

I, Aaron J. Austin, Wisconsin Professional Land Surveyor, do hereby certify that the corner location on this record was determined by me and/or under my direct supervision and that this U.S. Public Land Survey Monument Record is correct and complete to the best of my knowledge and belief.

Dated this 8th day of July, 2015.

Aaron J. Austin
 Aaron J. Austin, S-2922



● = CORNER LOCATION

HISTORY OF CORNER ESTABLISHMENT:

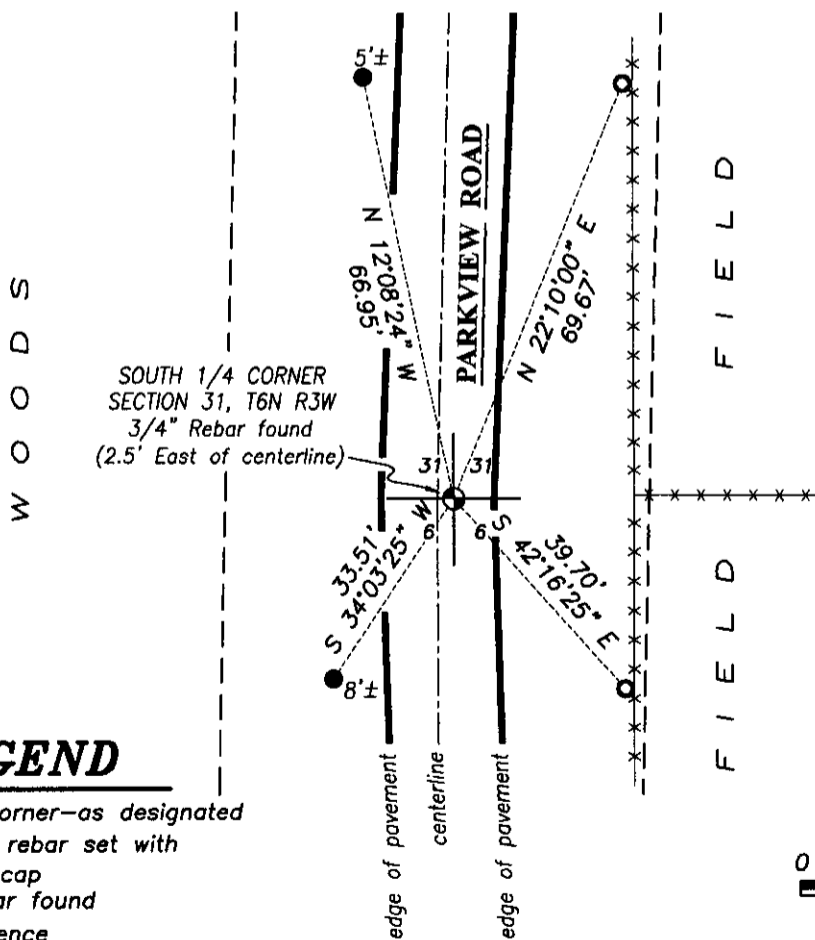
- 1832-Sibley set original corner.
- 1882-J.C. Scott tied to the corner on a Survey filed in Book D, Page 122.
- 1987-Douglas Malliet reset the corner on a Survey filed in Book L, Page 357.
- 1997-Larry Austin reset the corner and prepared a Survey Monument Record for this corner.
- 1997-Larry Austin tied to the corner on a Survey filed in Book Z, Page 73.
- 2005-Larry Austin tied to the corner on a Survey filed in Book 18, Page 11.
- 2003-Larry Austin tied to the corner on a Survey filed in Book 14, Page 45.

DESCRIPTION OF CORNER EVIDENCE FOUND:

I found a 3/4" rebar in place at the corner location. I was unable to recover two witness corners and set 3 new ones as shown hereon. I verified this corner location with E.D.M. and G.P.S. methods.

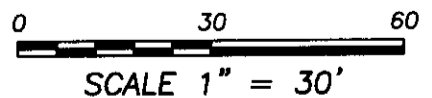
DESCRIPTION OF CORNER AND WITNESS MONUMENTS, references and accessories used to perpetuate the original or re-established location of this corner. Witnesses to corner location Shane Austin and Brandon Austin.

SKETCH:



LEGEND

- Section Corner—as designated
- 1/2"x12" rebar set with red "tie" cap
- 1/2" rebar found
- x-x- Existing fence



4211 HWY 81 E, LANCASTER, WI 53813
 PHONE: 608-723-6363 FAX: 608-723-6702

JOB NO: 15a079
 H:\CRD\15a079
 H:\TIE\T6NR3W\132

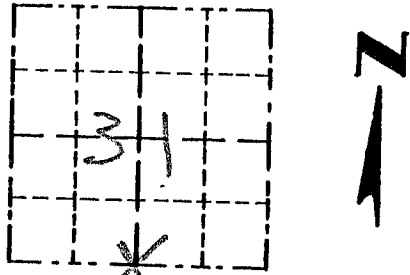
FIELDBOOK: TDSR
 DRAWN BY: AJ AUSTIN
 CREW: SW AUSTIN, BL AUSTIN

Survey Monument Record

TYPE OF MONUMENT 3/4" X 24" IRON
BAR SET

CORNER NO. 132
 SECTION 31
 TOWN 6N
 RANGE 3W

FIELD BOOK: 97-12
 PAGE (10)



LOCATION
 (Indicated by "X")

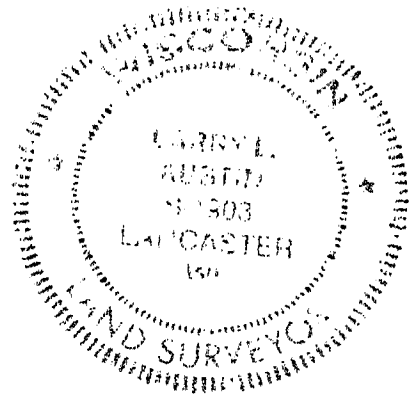
BASIS FOR MONUMENT LOCATION

(Use reverse side if necessary)

Show info such as: History of corner, with reference to Vol. and pg., dates, surveyor; exact description of monument replaced; if location computed, by taped or EDM traverse; landowner, remarks, etc.

SEAL:

CORNER SET IN 1832 BY SYLVESTER SIBLEY. NO RECORD FOUND SINCE ORIGINAL SURVEY. CORNER WAS SET AT A OCCUPIED LOCATION. CENTERLINE NORTH/SOUTH FOR EASTING. NOTHING IS EXISTING FENCE EAST/WEST. VERIFIED ITS LOCATION USING EDM METHODS.



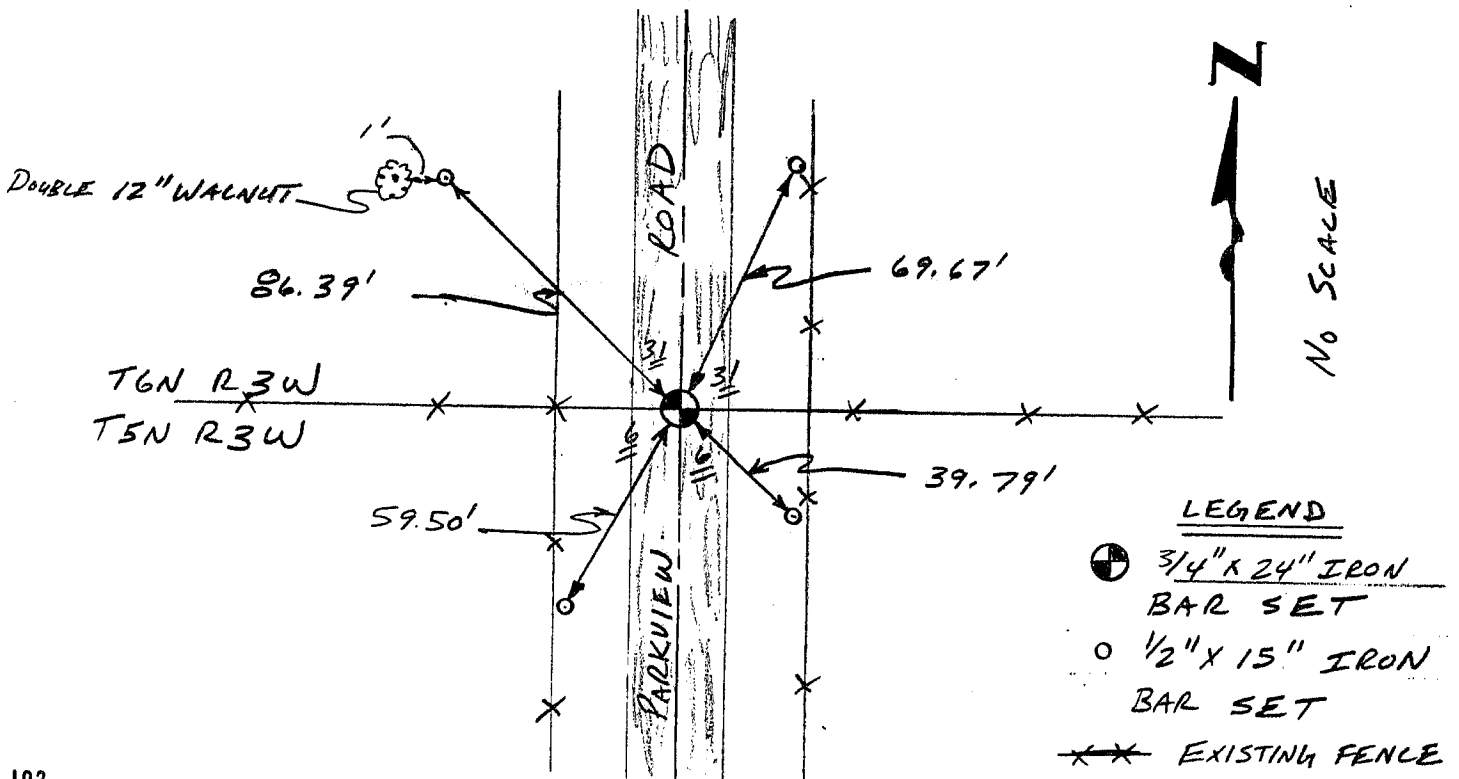
CERTIFIED CORRECT

Larry L. Austin
 Registered Land Surveyor

DATE: 7/30/97

TIE SKETCH

Show at least three (3) ties and monument



LEGEND

- 3/4" X 24" IRON BAR SET
- 1/2" X 15" IRON BAR SET
- EXISTING FENCE