

GRANT COUNTY CERTIFIED LAND CORNER

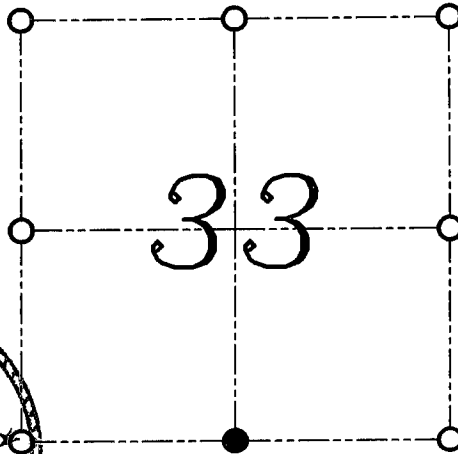
CORNER NUMBER 128

CERTIFICATE:

I, Larry L. Austin, do hereby certify that on the 13th day of January, 2000, I found no evidence of the South 1/4 corner of Section 33, Town 6 North, Range 3 West, of the Fourth Principal Meridian, and I re-established said corner according to the Wisconsin Statutes as shown and described hereon.

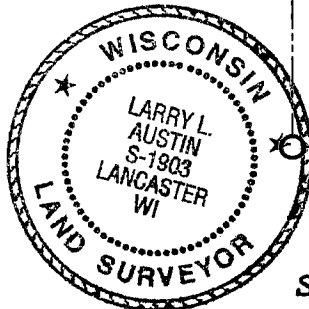
DATED THIS 21st DAY OF JANUARY, 2000

Larry L. Austin
Larry L. Austin S-1903



● = CORNER LOCATION

**SOUTH 1/4 CORNER OF
SECTION 33, T 6 N R 3 W
TOWN OF MOUNT IDA**



SEAL

HISTORY OF ORIGINAL CORNER ESTABLISHMENT:

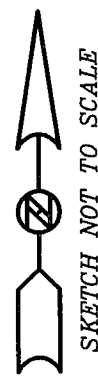
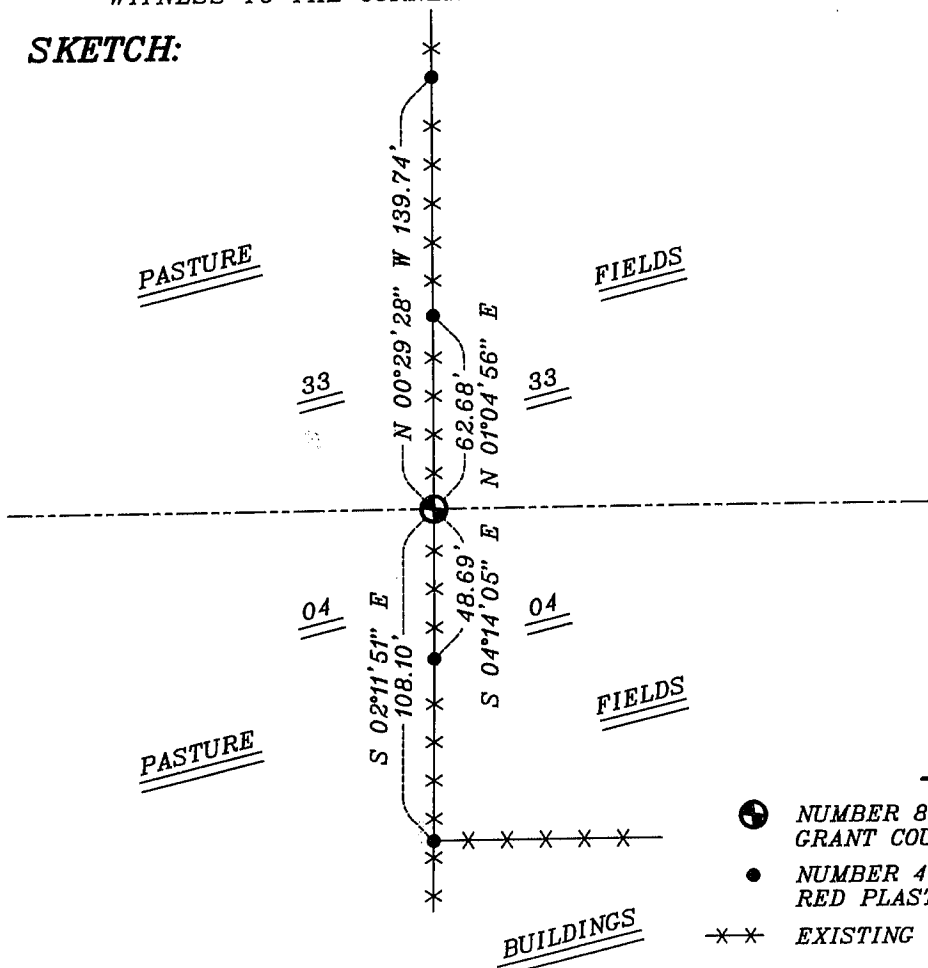
The original corner was set in 1832 by Lucius Lyon.
No other record of the corner was found.

DESCRIPTION OF CORNER EVIDENCE FOUND:

I found no evidence of the original corner. I reset the corner midway between the Southwest and Southeast corners. Verified this location using E.D.M. and G.P.S. methods.

DESCRIPTION OF CORNER AND WITNESS MONUMENTS, references and accessories used to perpetuate the original or re-established location of this corner
WITNESS TO THE CORNER LOCATION: SHANE AUSTIN ; BOBBY SEDGWICK

SKETCH:



LEGEND

- ⊕ NUMBER 8 X 30" REBAR SET WITH GRANT COUNTY ALUMINUM CAP
- NUMBER 4 X 24" REBAR SET WITH RED PLASTIC CAP
- *- EXISTING FENCE LOCATION