

U.S. PUBLIC LAND SURVEY MONUMENT RECORD

(AS REQUIRED BY s.A-E 7.08, WI. ADM. CODE)

HISTORY OF ORIGINAL CORNER ESTABLISHMENT AND SUBSEQUENT RESTORATIONS AND DESCRIPTION OF ANY RECORD, MONUMENT, OCCUPATION, TESTIMONIAL OR OTHER EVIDENCE CONSIDERED:

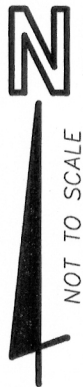
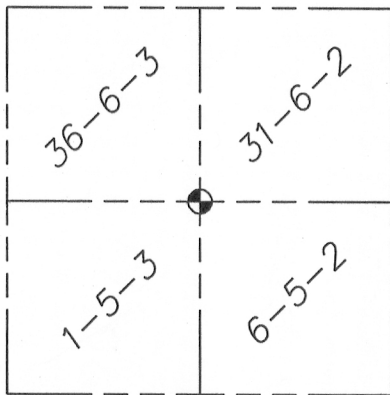
NO RECORD EVIDENCE SINCE THE ORIGINAL GOVERNMENT SURVEY.

A $\frac{3}{4}$ " \emptyset REBAR WAS FOUND AND ACCEPTED AS THE CORNER. THE STAKED LOCATION MATCHES PHYSICAL EVIDENCE WELL.





CORNER WAS: (CHECK ALL THAT APPLY)

- RESTORED THROUGH ACCEPTANCE OF AN OBLITERATED EVIDENCE LOCATION.
- RESTORED THROUGH ACCEPTANCE OF A FOUND PERPETUATED LOCATION.
- CONSIDERED A LOST CORNER AND REESTABLISHED THROUGH LOST CORNER PROPORTIONATE METHODS (INCLUDE A PLAN VIEW DRAWING SHOWING BEARING & DISTANCE TO OTHER PUBLIC LAND SURVEY CORNERS USED FOR PROPORTIONING AND DETERMINING THE CORNER LOCATION)
- RESTORED OR REESTABLISHED IN A LOCATION THAT DIFFERS FROM A PREVIOUS RESTORATION OR REESTABLISHMENT (INCLUDE A PLAN VIEW DRAWING AND INDICATE WHAT WAS SET AND/OR FOUND)

COORDINATES ARE ESTABLISHED TO THE CORNER AND WITNESS TIES AS SHOWN BELOW:
(BEARING REFERENCE AND COORDINATES ARE LAFAYETTE COUNTY COORDINATE SYSTEM AS DEFINED BY WI-DOT)

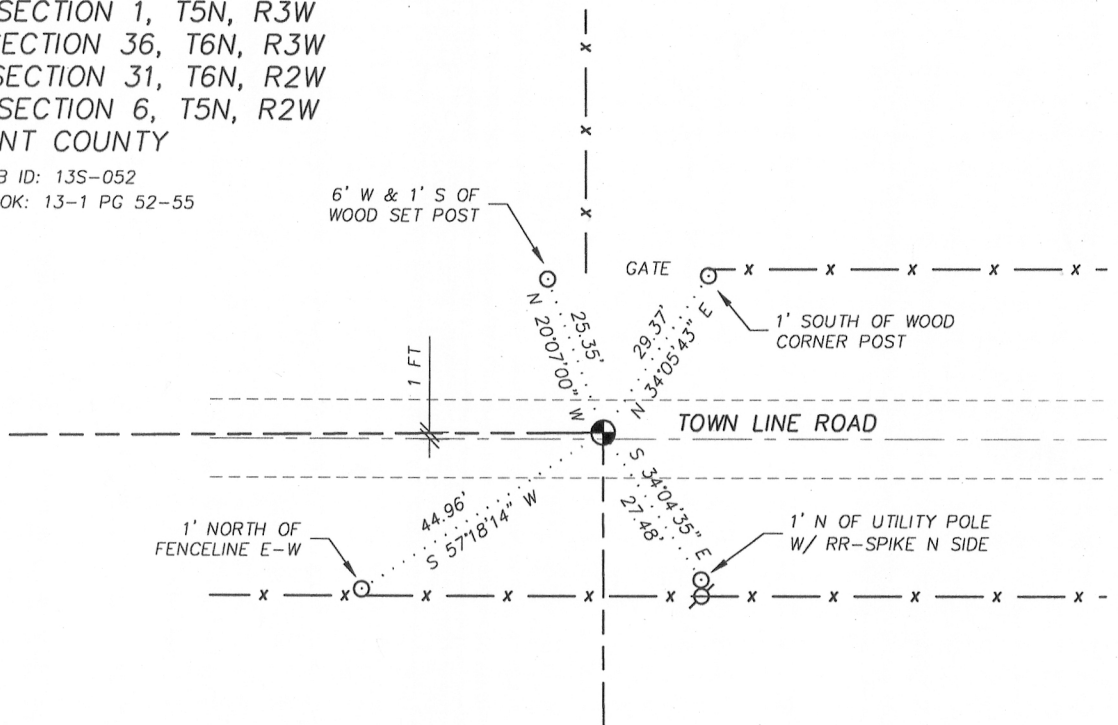


LEGEND

-  3/4" \emptyset REBAR FOUND
-  5/8" \emptyset REBAR SET
-  UTILITY POLE
-  FENCE LINE

NE CORNER: SECTION 1, T5N, R3W
SE CORNER: SECTION 36, T6N, R3W
SW CORNER: SECTION 31, T6N, R2W
NW CORNER: SECTION 6, T5N, R2W
GRANT COUNTY

JOB ID: 13S-052
FIELD BOOK: 13-1 PG 52-55



I, LAURENCE E SCHMIT CERTIFY THAT THE CORNER LOCATION SHOWN ON THIS RECORD WAS DETERMINED BY ME OR UNDER MY DIRECTION AND CONTROL AND THAT THIS U.S. PUBLIC LAND SURVEY MONUMENT RECORD IS CORRECT AND COMPLETE TO THE BEST OF MY KNOWLEDGE AND BELIEF.

Laurence E Schmit 8-23-13

LAURENCE E. SCHMIT, RLS-1312

DATE

