

63106

U.S. PUBLIC LAND SURVEY MONUMENT RECORD - GRANT COUNTY, WI

Section 27, Town 6 North Range 3 West, Town of Mount Ida (a)

NOTE: This form is intended and designed to fulfill all requirements of the Wisconsin Administrative Code Chapter A-E 7.08, U.S. Public Land Survey Monument Record (3) (a) (b) (c) (d) (e) (f) (g) (h) (i).

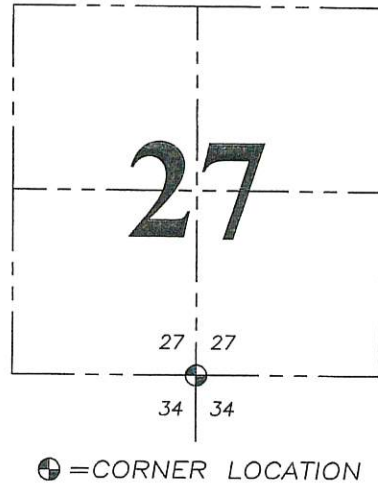
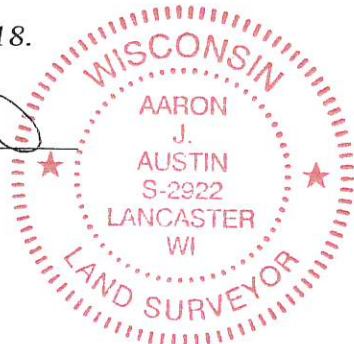
CERTIFICATE: (i)

I, Aaron J. Austin, Wisconsin Professional Land Surveyor, do hereby certify that the corner location on this record was determined by me and/or under my direct supervision and that this U.S. Public Land Survey Monument Record is correct and complete to the best of my knowledge and belief.

GRANT CO. CORNER I.D.: 63103

Dated this 20th day of June, 2018.

Aaron J. Austin
Aaron J. Austin, S-2922



Grant County Coordinates:
NAD 83 (2011)
Northing: 564,185.45
Easting: 817,731.33

HISTORY OF CORNER ESTABLISHMENT:

Harvey Parke set the original corner in 1833.
Bruce Bowden reset the corner and prepared a Survey Monument Record dated 10-23-1996.

DESCRIPTION OF CORNER EVIDENCE FOUND: (b) (f) (g) (h)

I found the Aluminum Monument as set by Bruce Bowden. I set four new witness corners after I verified the corner's location with G.P.S. and E.D.M. methods.

DESCRIPTION OF CORNER AND WITNESS MONUMENTS, references and accessories used to perpetuate the original or re-established location of this corner. (c) (d) (e)

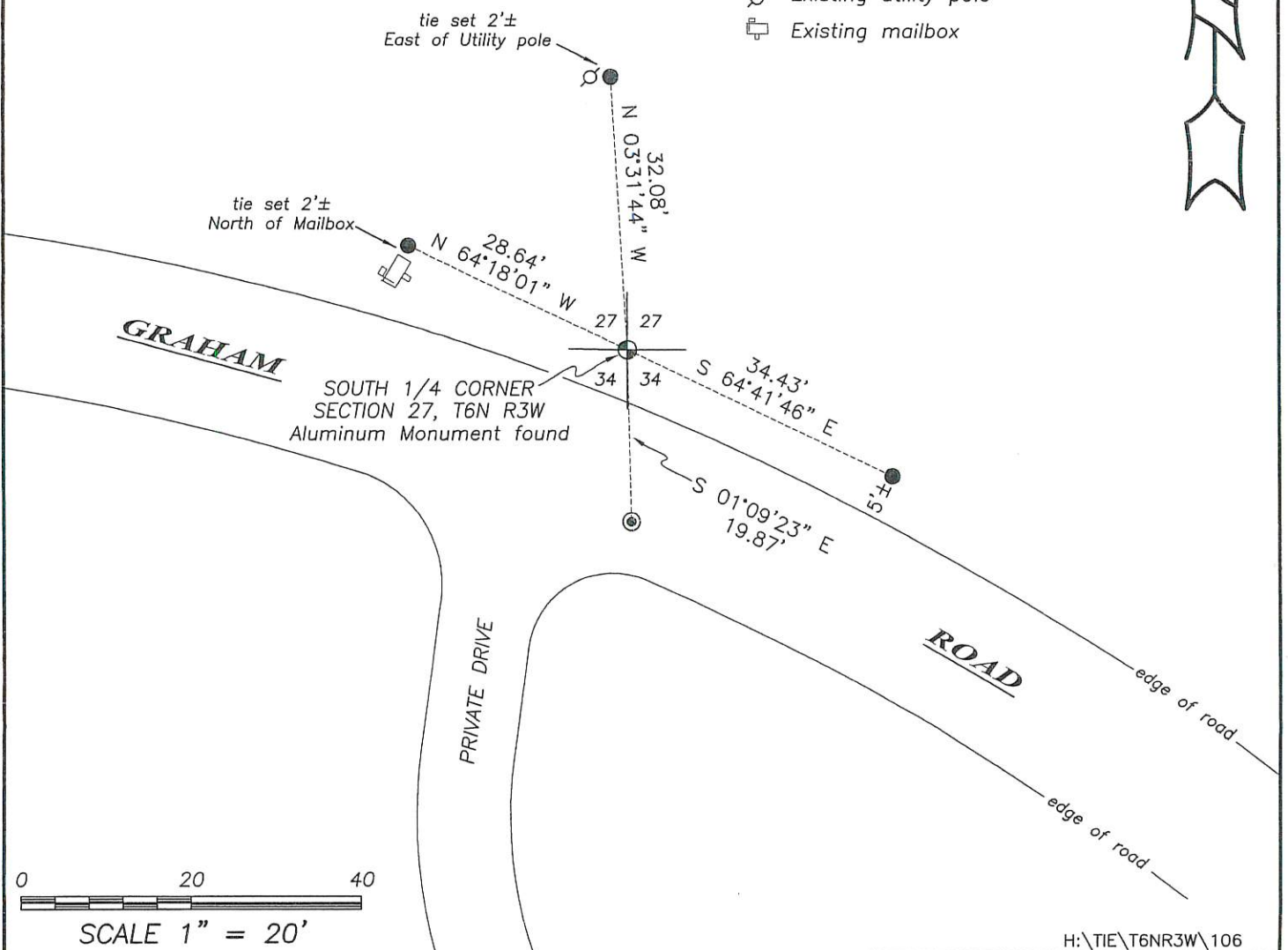
Witnesses to corner location Shane Austin.

LEGEND

- ⊕ Section Corner—as designated
- 3/4" x 18" rebar set
- ⊙ Magnetic Nail set
- ⊗ Existing utility pole
- ☐ Existing mailbox



SKETCH:



63106

U.S. PUBLIC LAND SURVEY MONUMENT RECORD - GRANT COUNTY, WI

Section 27, Town 6 North Range 3 West, Town of Mount Ida (a)

NOTE: This form is intended and designed to fulfill all requirements of the Wisconsin Administrative Code Chapter A-E 7.08, U.S. Public Land Survey Monument Record (3) (a) (b) (c) (d) (e) (f) (g) (h) (i).

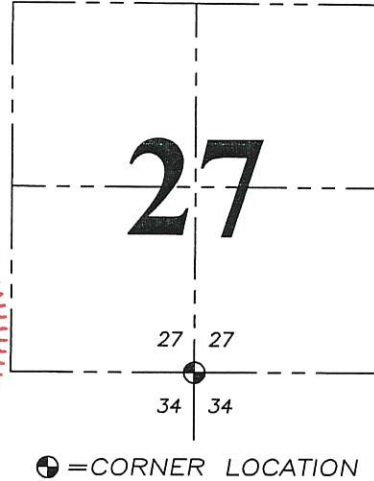
CERTIFICATE: (i)

I, Aaron J. Austin, Wisconsin Professional Land Surveyor, do hereby certify that the corner location on this record was determined by me and/or under my direct supervision and that this U.S. Public Land Survey Monument Record is correct and complete to the best of my knowledge and belief.

GRANT CO. CORNER I.D.: 63103

Dated this 20th day of June, 2018.

Aaron J. Austin
Aaron J. Austin, S-2922



Grant County Coordinates:
NAD 83 (2011)
Northing: 564,185.45
Easting: 817,731.33

HISTORY OF CORNER ESTABLISHMENT:

Harvey Parke set the original corner in 1833.
Bruce Bowden reset the corner and prepared a Survey Monument Record dated 10-23-1996.

DESCRIPTION OF CORNER EVIDENCE FOUND: (b) (f) (g) (h)

I found the Aluminum Monument as set by Bruce Bowden. I set four new witness corners after I verified the corner's location with G.P.S. and E.D.M. methods.

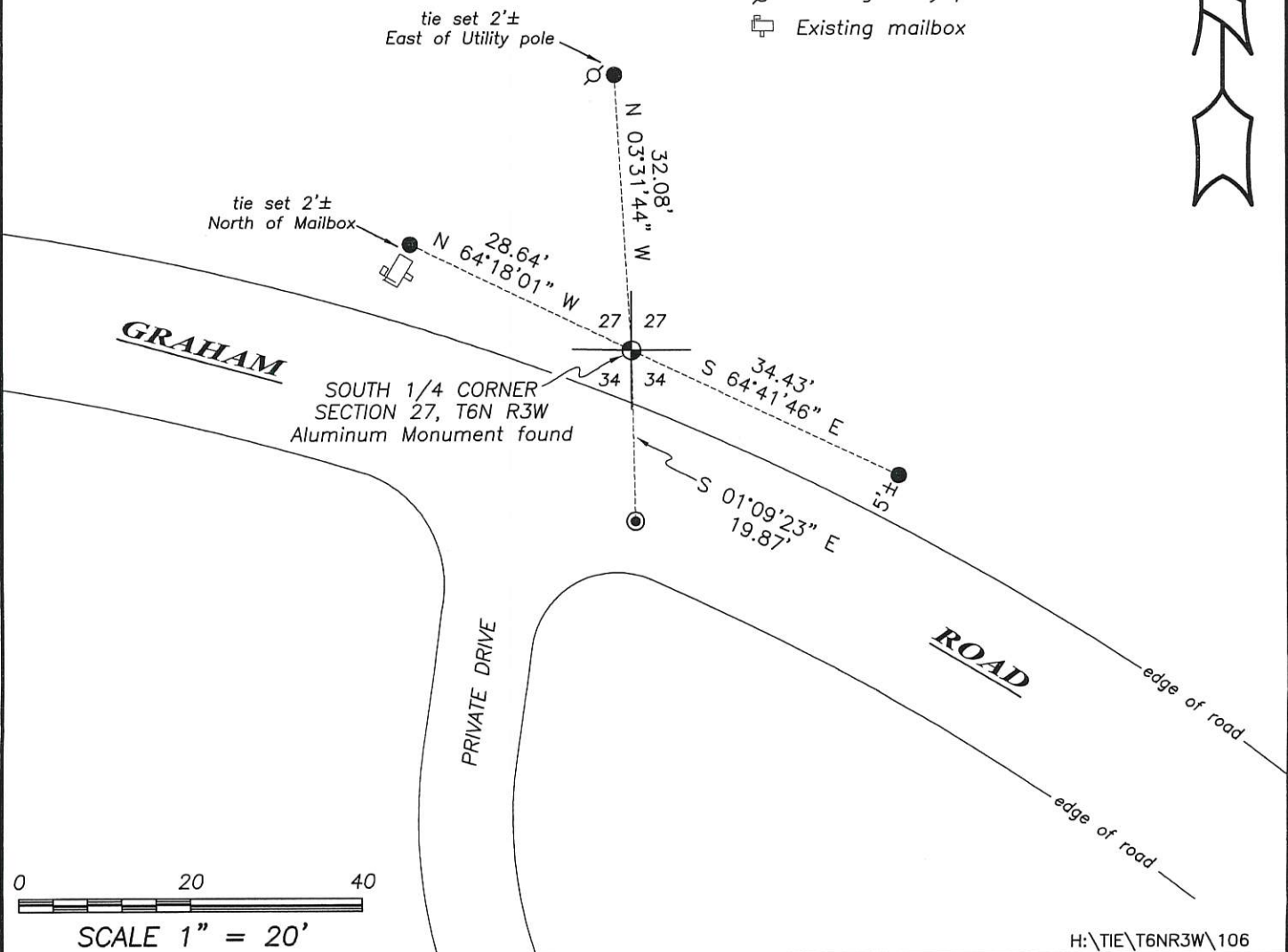
DESCRIPTION OF CORNER AND WITNESS MONUMENTS, references and accessories used to perpetuate the original or re-established location of this corner. (c) (d) (e)

Witnesses to corner location Shane Austin.

SKETCH:

LEGEND

- ⊕ Section Corner—as designated
- 3/4" x 18" rebar set
- ⊙ Magnetic Nail set
- ⊕ Existing utility pole
- ⊞ Existing mailbox

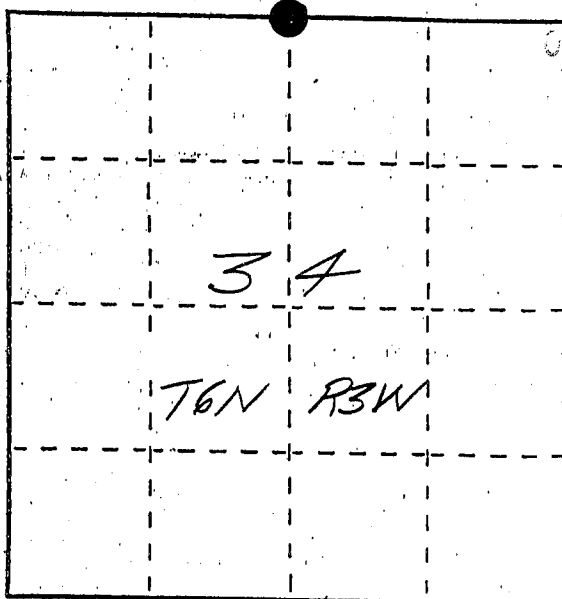


U. S. PUBLIC LAND SURVEY MONUMENT RECORD

INSTRUCTIONS: This record shall show the location of the corner and shall include all of the following nine elements (a through i).

- (a) Identify the corner by reference to the U.S. public land survey system.
- = Corner monument restored.

The North Quarter corner
of section 34, Town 6
North, Range 3 West,
Mount Ida Township,
Grant County, WI



- (b) Describe any record evidence, monument evidence, occupational evidence, testimonial evidence or any other material evidence you considered, and whether the monument was found or placed.

Corner was set from a tie to a survey
by John G Cejka - S 1222 dated September
20, 1982

- (c) In the plan view drawing below, provide reference ties to at least 4 witness monuments, or, if the location is within a municipality, to at least 2 witness monuments. (Witness monuments shall be made of concrete, natural stone, iron or other equally durable material, ~~except~~ wood.) Describe witness monuments.

- (d) Show a plan view drawing depicting the relevant monuments and reference ties which is sufficient in detail to enable accurate relocation of the corner monument if the corner monument is disturbed. Indicate north.

Legend

- - Grant Co. Driveable aluminum monument - set
- - No. 6 x 24" rebar - set
- ▲ - Pole barn spike - set
- x x x - fence

