

63105

# U.S. PUBLIC LAND SURVEY MONUMENT RECORD - GRANT COUNTY, WI

Section 35, Town 6 North Range 3 West, Town of Mt. Ida (a)

NOTE: This form is intended and designed to fulfill all requirements of the Wisconsin Administrative Code Chapter A-E 7.08, U.S. Public Land Survey Monument Record (3) (a) (b) (c) (d) (e) (f) (g) (h) (i).

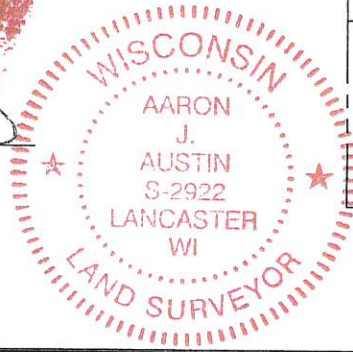
Grant County Corner I.D.: 63105

CERTIFICATE: (i)

I, Aaron J. Austin, Wisconsin Professional Land Surveyor, do hereby certify that the corner location on this record was determined by me and/or under my direct supervision and that this U.S. Public Land Survey Monument Record is correct and complete to the best of my knowledge and belief.

Dated this 29th day of June, 2018.

*Aaron J. Austin*  
Aaron J. Austin, S-2922



⊕ = CORNER LOCATION

Grant County Coordinates:  
NAD 83 (2011)  
Northing: 564,170.58  
Easting: 820,379.91

HISTORY OF CORNER ESTABLISHMENT:

Original corner was set by Parke in 1833.

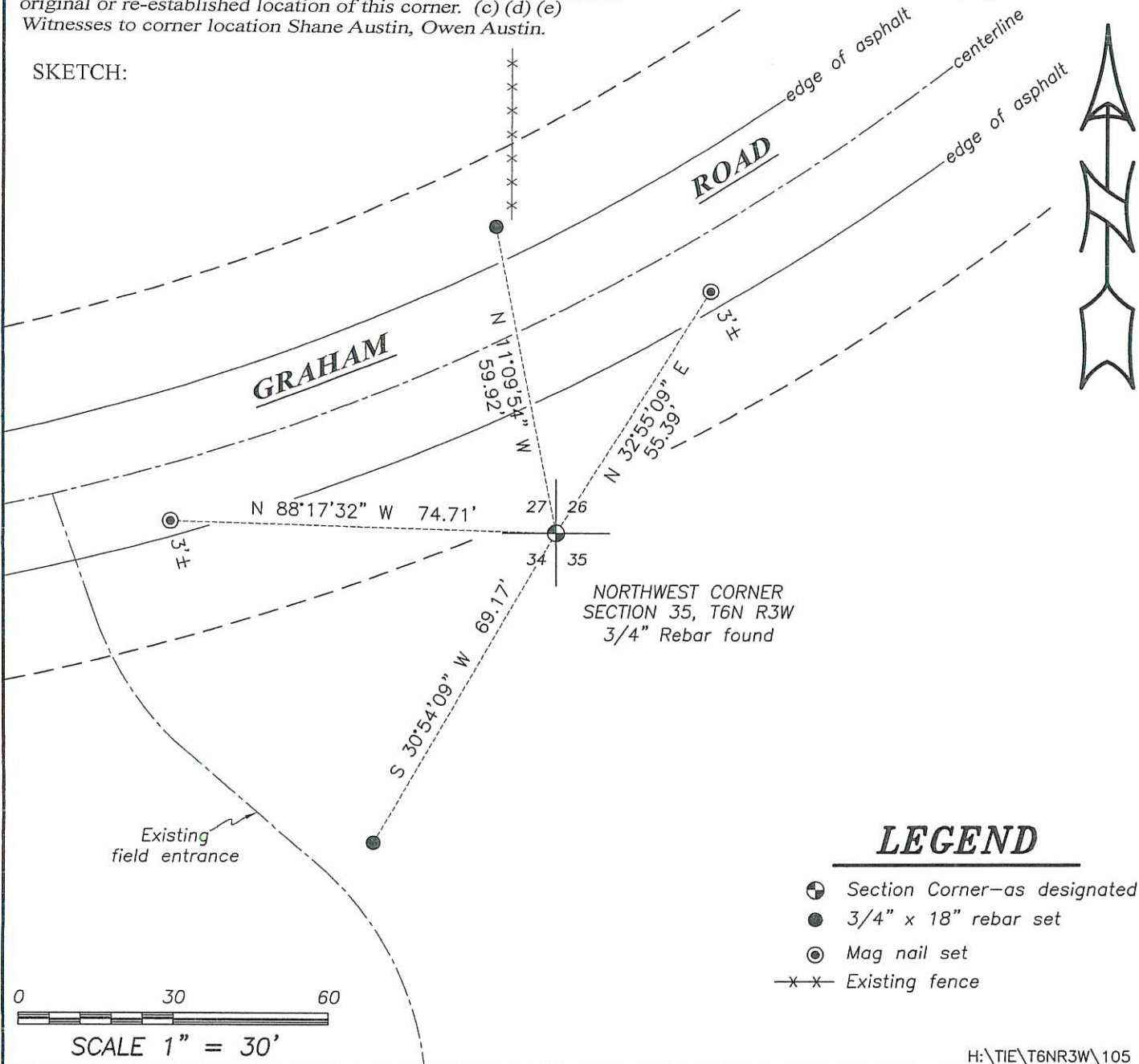
Ronald Hayden set a 3/4" and prepared a Survey Monument Record dated 11-5-1990.

DESCRIPTION OF CORNER EVIDENCE FOUND: (b) (f) (g) (h)

I found the 3/4" rebar as set by Hayden. I set four new witness corners after I verified the monument's location with G.P.S. and E.D.M. methods.

DESCRIPTION OF CORNER AND WITNESS MONUMENTS, references and accessories used to perpetuate the original or re-established location of this corner. (c) (d) (e)  
Witnesses to corner location Shane Austin, Owen Austin.

SKETCH:



### LEGEND

- ⊕ Section Corner—as designated
- 3/4" x 18" rebar set
- ⊙ Mag nail set
- x-x- Existing fence

0 30 60

SCALE 1" = 30'

63105

# U.S. PUBLIC LAND SURVEY MONUMENT RECORD - GRANT COUNTY, WI

Section 35, Town 6 North Range 3 West, Town of Mt. Ida (a)

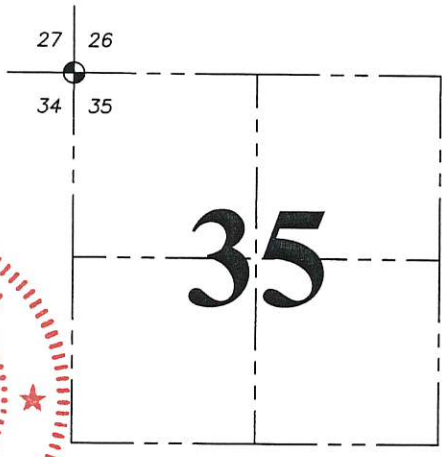
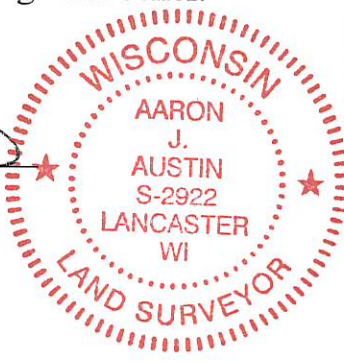
NOTE: This form is intended and designed to fulfill all requirements of the Wisconsin Administrative Code Chapter A-E 7.08, U.S. Public Land Survey Monument Record (3) (a) (b) (c) (d) (e) (f) (g) (h) (i).

Grant County Corner I.D.: 63105

CERTIFICATE: (i)  
I, Aaron J. Austin, Wisconsin Professional Land Surveyor, do hereby certify that the corner location on this record was determined by me and/or under my direct supervision and that this U.S. Public Land Survey Monument Record is correct and complete to the best of my knowledge and belief.

Dated this 29th day of June, 2018.

*Aaron J. Austin*  
Aaron J. Austin, S-2922



● = CORNER LOCATION

Grant County Coordinates:  
NAD 83 (2011)  
Northing: 564,170.58  
Easting: 820,379.91

### HISTORY OF CORNER ESTABLISHMENT:

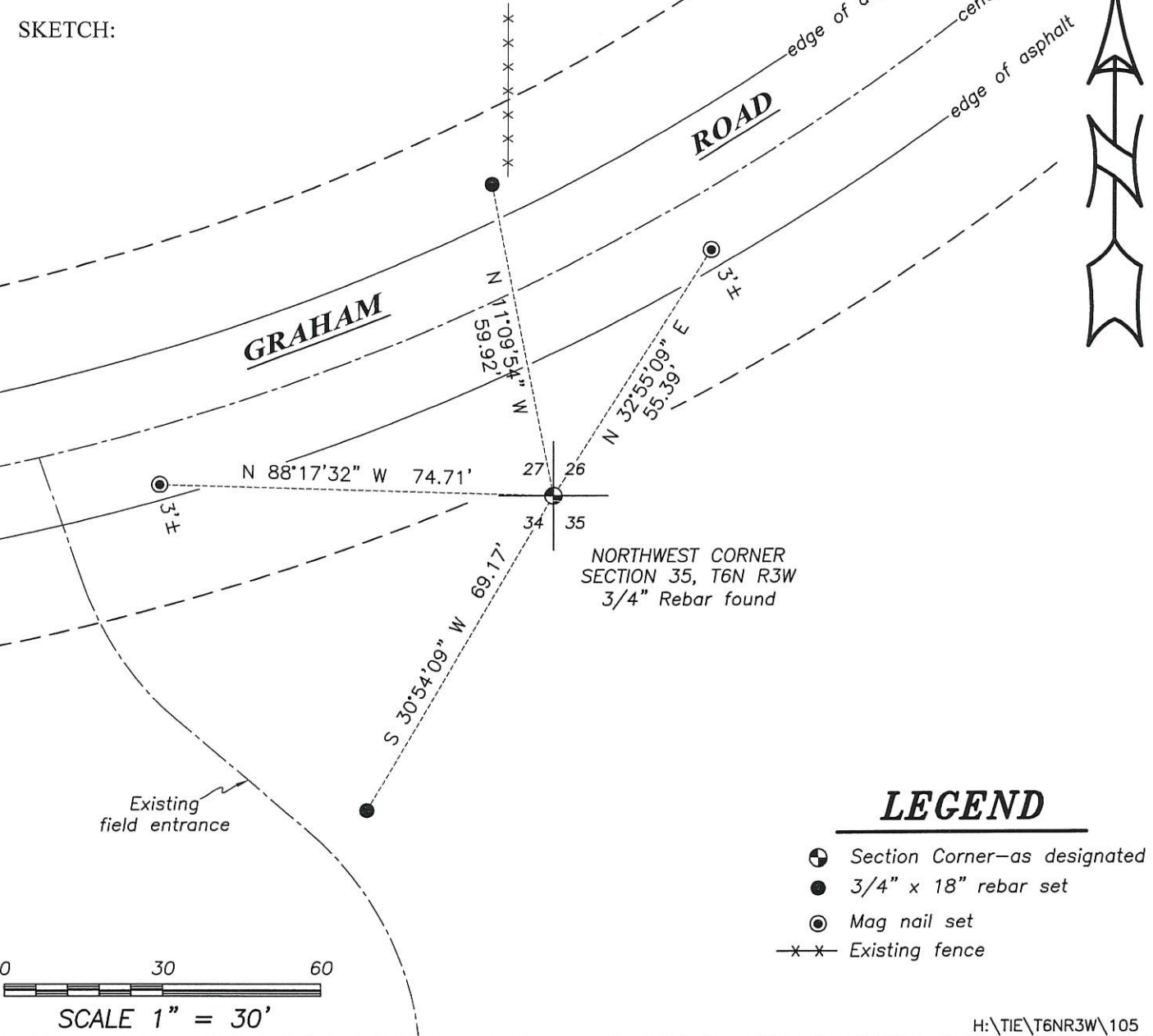
Original corner was set by Parke in 1833.  
Ronald Hayden set a 3/4" and prepared a Survey Monument Record dated 11-5-1990.

### DESCRIPTION OF CORNER EVIDENCE FOUND: (b) (f) (g) (h)

I found the 3/4" rebar as set by Hayden. I set four new witness corners after I verified the monument's location with G.P.S. and E.D.M. methods.

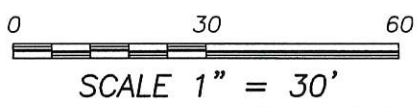
### DESCRIPTION OF CORNER AND WITNESS MONUMENTS, references and accessories used to perpetuate the original or re-established location of this corner. (c) (d) (e)

SKETCH:



### LEGEND

- Section Corner—as designated
- 3/4" x 18" rebar set
- ⊙ Mag nail set
- x-x- Existing fence



CERTIFIED LAND CORNER

DEC 27 1990

STATE OF WISCONSIN )  
COUNTY OF GRANT ) S.S.

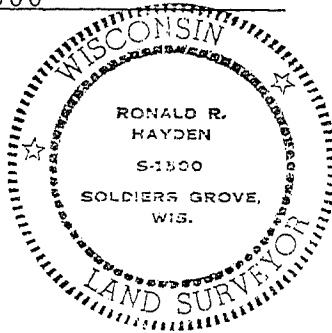
CERTIFICATE

I, Ronald R. Hayden, do hereby certify that on the 3 day of November 1990, I found (evidence)(no evidence) of the ~~xxxxx~~ SW corner of Section 26, T 6 N, R 3 W, Fourth Principal Meridian, and I re-established said corner according to the Wisconsin Statutes as shown and described hereon.

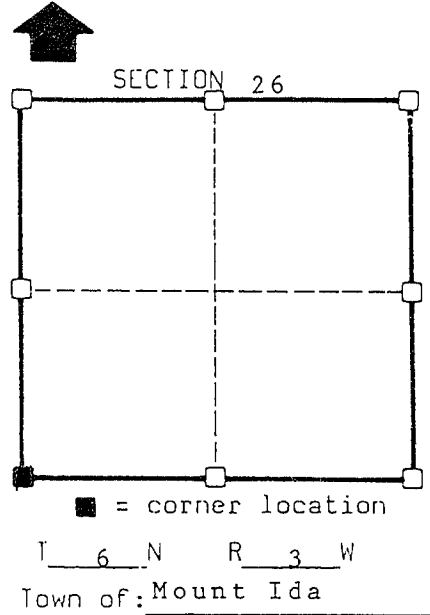
Dated this 5 day of November 1990

*Ronald R. Hayden*

Ronald R. Hayden, RLS-1500  
Title



Seal



History of original corner establishment:

Original done by Parke in 1833.

Description of corner evidence found: Corner fell in excavated area of Graham Road. Excavated corner area but entire area has been disturbed. Established corner from evidence found in Sections 25, 26, 27, 34, 35, & 36. Set 3/4" X 30" iron rebar at the corner location. Set upside/down fencepost 1' South of corner.

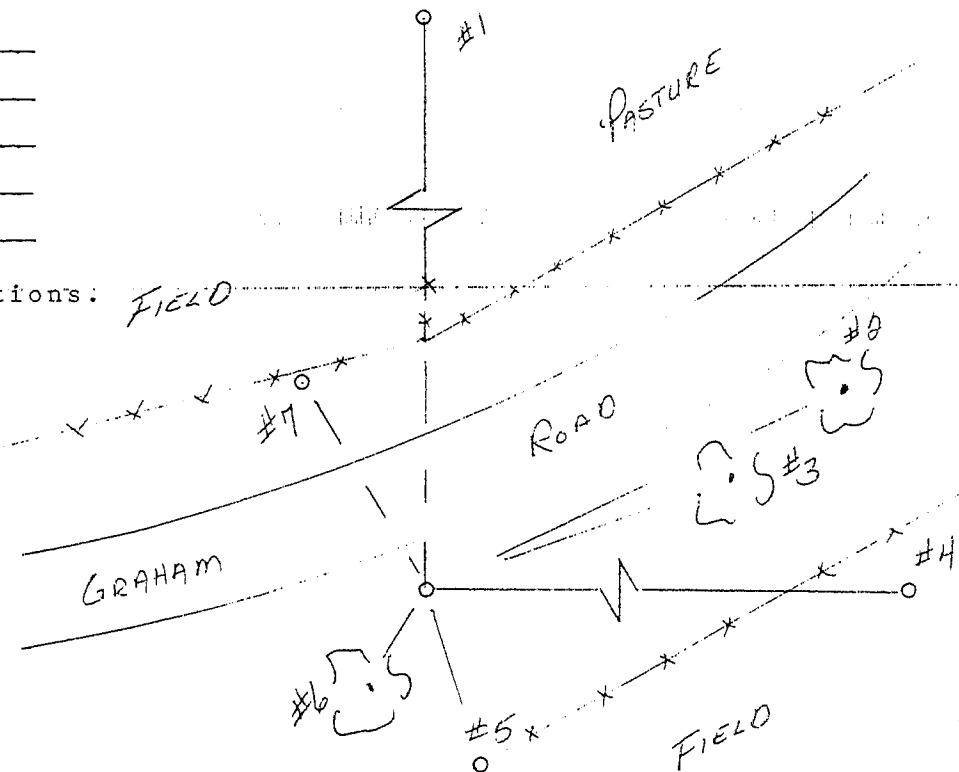
Description of corner and witness monuments, references and accessories used to perpetuate the original or re-established location of this corner:

Witnesses to corner location:

- Ronald R. Hayden, RLS
- Steven E. Hayden
- Robbie R. Hayden

See back for witness descriptions:

Sketch:



SURVEY CONTROL ORDER

horizontal

vertical

WISCONSIN COORDINATE SYSTEM

Corner	East(X)	North(Y)	Elevation(Z)	Zone
Control Sta. Name				