

63098

# U.S. PUBLIC LAND SURVEY MONUMENT RECORD - GRANT COUNTY, WI

Section 27, Town 6 North Range 3 West, Town of Mount Ida (a)

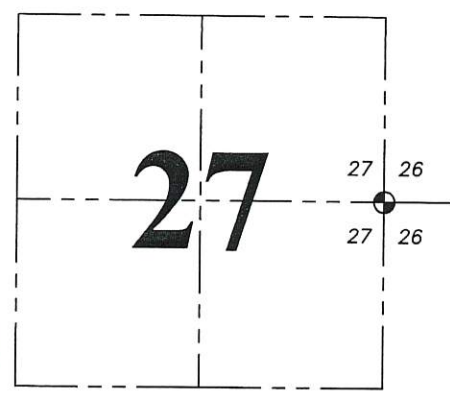
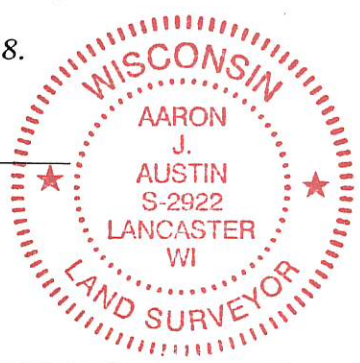
NOTE: This form is intended and designed to fulfill all requirements of the Wisconsin Administrative Code Chapter A-E 7.08, U.S. Public Land Survey Monument Record (3) (a) (b) (c) (d) (e) (f) (g) (h) (i).

CERTIFICATE: (i)  
I, Aaron J. Austin, Wisconsin Professional Land Surveyor, do hereby certify that the corner location on this record was determined by me and/or under my direct supervision and that this U.S. Public Land Survey Monument Record is correct and complete to the best of my knowledge and belief.

GRANT CO. CORNER I.D.: 63098

Dated this 20th day of June, 2018.

*Aaron J. Austin*  
Aaron J. Austin, S-2922



⊕ = CORNER LOCATION

Grant County Coordinates:  
NAD 83 (2011)  
Northing: 566,819.16  
Easting: 820,368.87

HISTORY OF CORNER ESTABLISHMENT:  
Harvey Parke set the original corner in 1833.  
Ronald Hayden reset the corner and prepared a Survey Monument Record dated 11-5-1990.

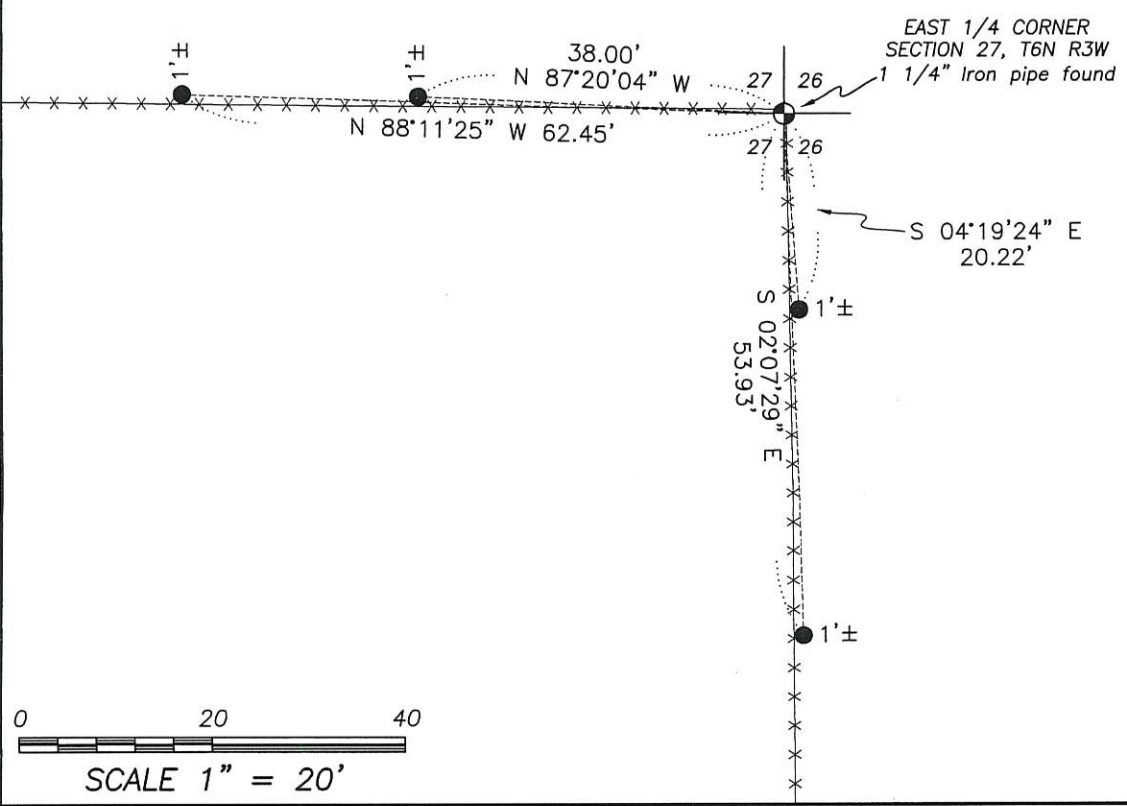
DESCRIPTION OF CORNER EVIDENCE FOUND: (b) (f) (g) (h)  
I found the Aluminum Monument as set by Hayden. I set four new witness corners after I verified the monument's location with G.P.S. and E.D.M. methods.

DESCRIPTION OF CORNER AND WITNESS MONUMENTS, references and accessories used to perpetuate the original or re-established location of this corner. (c) (d) (e)  
Witnesses to corner location Shane Austin.

SKETCH:

## LEGEND

- ⊕ Section Corner—as designated
- 3/4" x 18" rebar set
- x-x- Existing fence



CERTIFIED LAND CORNER

DEC 27 1990

STATE OF WISCONSIN )  
 COUNTY OF GRANT ) S.S.

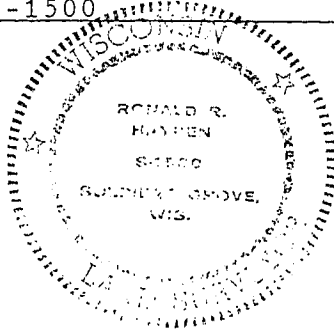
CERTIFICATE

I, Ronald R. Hayden, do hereby certify that on the 3 day of November 1990, I found (evidence) ~~(no evidence)~~ of the W $\frac{1}{2}$  corner of Section 26, T 6 N, R 3 W, Fourth Principal Meridian, and I re-established said corner according to the Wisconsin Statutes as shown and described hereon.

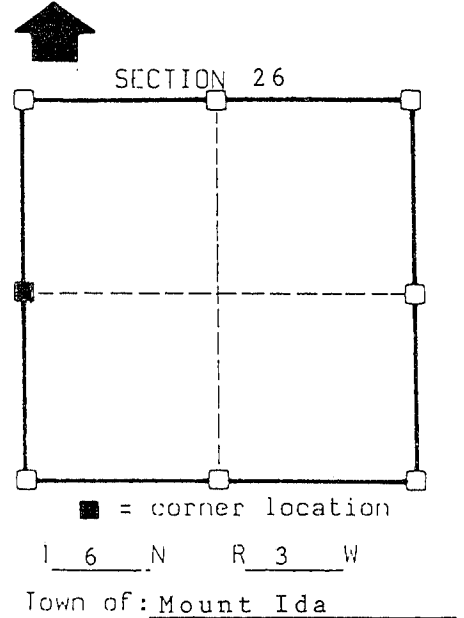
Dated this 5 day of November 1990

*Ronald R. Hayden*

Ronald R. Hayden, RLS-1500  
 Title



Seal



History of original corner establishment:

Original done by Parke in 1833.

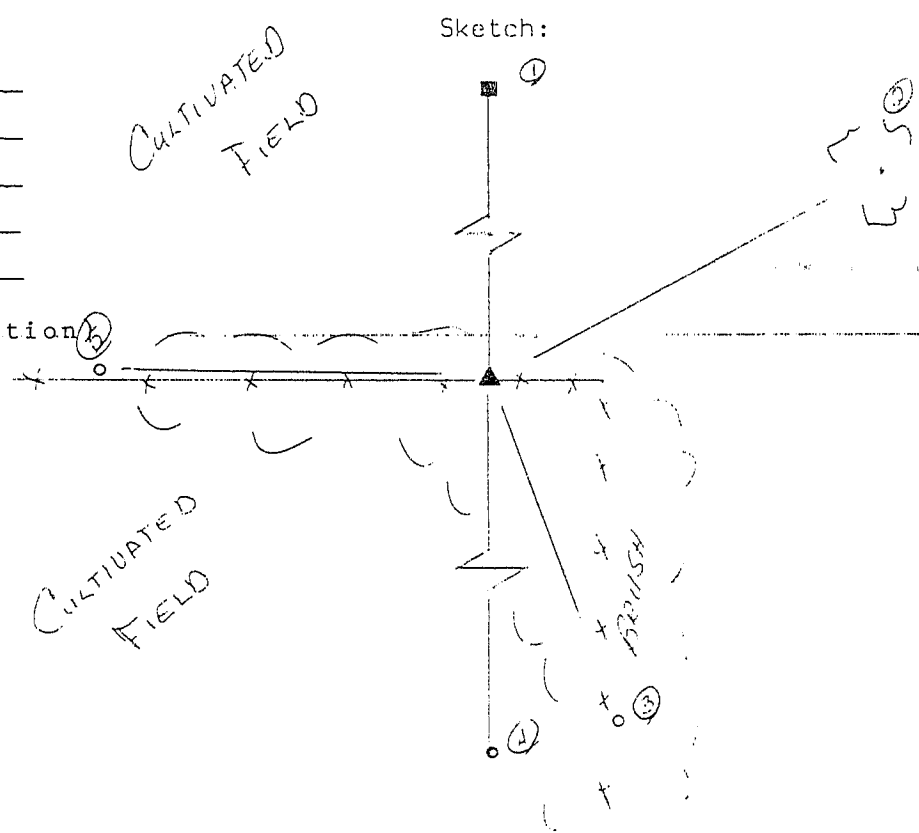
Description of corner evidence found: Excavated area 12' East and West by 5' North and South by 3'to5' deep. Found remains of an old fence corner post. Also found remains and discoloration of a 4" diameter wood post, set in the middle of a 4' X 4' square of different color soil, believe to be the mound of the original corner. Set 1 1/2" X 48" iron pipe for corner at 4" post.

Description of corner and witness monuments, references and accessories used to perpetuate the original or re-established location of this corner:

Witnesses to corner location:

- Ronald R. Hayden, RLS
- Robbie R. Hayden
- Steven E. Hayden

(See back for witness description)



TRIMLINE CONTROL ORDER

Corner	East (X)	North (Y)	Elevation (Z)	Zone
Control Sta. Name				

DEC 27 1990

## WITNESSES

1. Found 1" iron axle at the Northwest corner of Section 26.  
Witness bears: N 00° 28' 34" E 2663.09'.
2. Black cherry being 9" in diameter with a spike in the South Side, East of a dirt mound. Witness bears: N 62° E 71.10'.
3. Set 3/4" X 30" iron bar east of the fenceline. Witness bears; S 20° E 18.54'.
4. Corner #16 of Section 26, a 3/4 inch iron rebar.  
Witness bears: S 00° 27' 59" W 1324.43'.
5. Set 3/4" X 30" iron rebar 1' north of a Fencepost.  
Witness bears: S 90° W 37.83'.