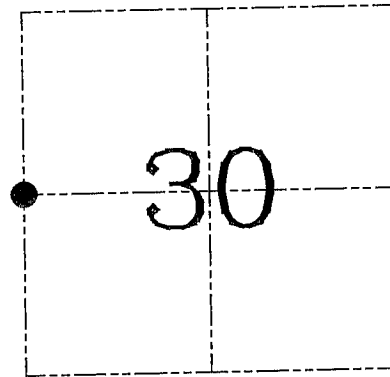


U.S. PUBLIC LAND SURVEY MONUMENT RECORD – GRANT COUNTY, WI
Section 30, Town 6 North Range 3 West, Town of Mount Ida

CERTIFICATE

I, Larry L. Austin, do hereby certify that the corner location on this record was determined by me and/or under my direct supervision and that this U.S. public land survey monument record is correct and complete to the best of my knowledge and belief.

Dated this 8th day of July, 2003



● = CORNER LOCATION

HISTORY OF CORNER ESTABLISHMENT

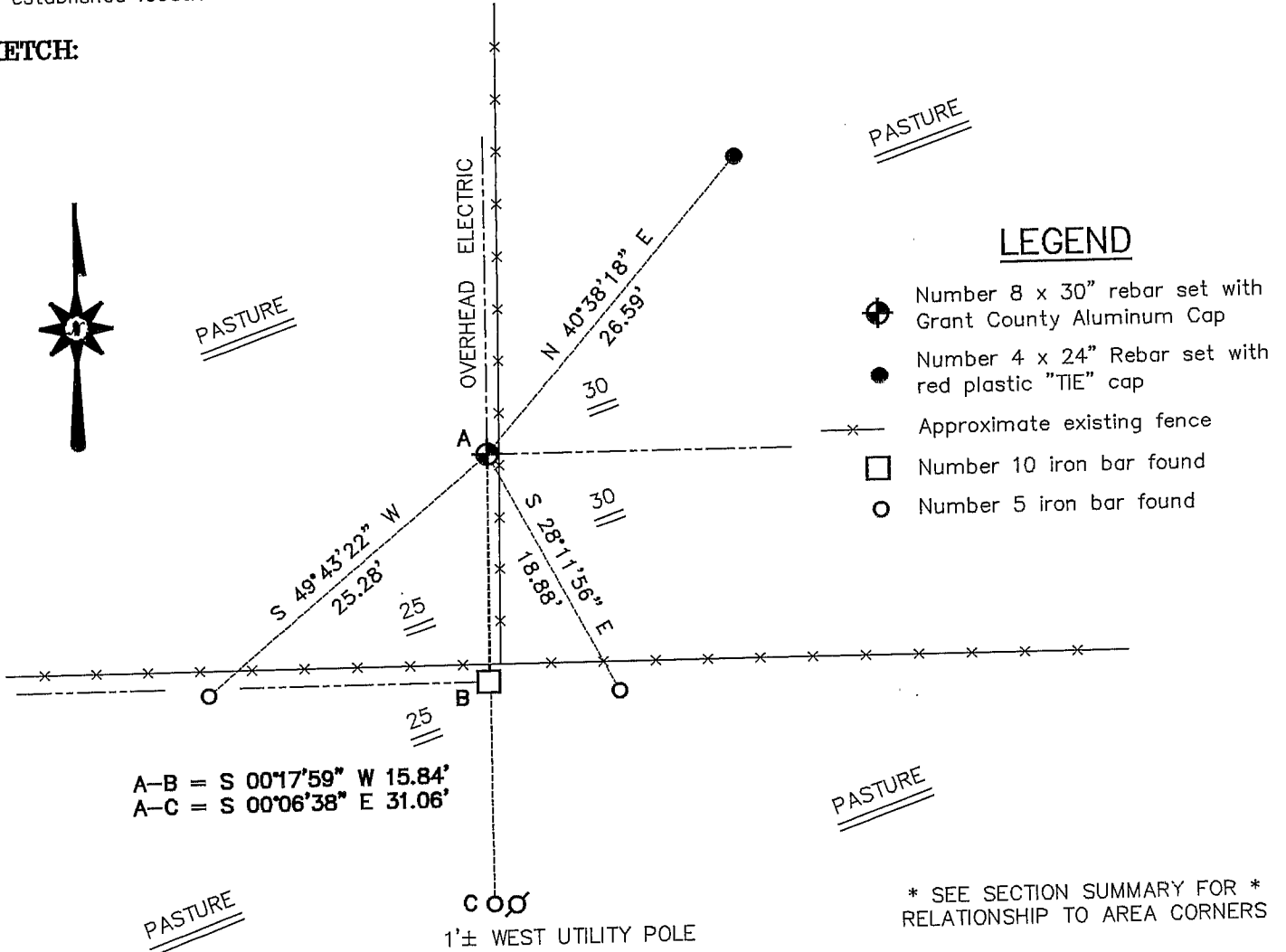
Corner was never originally set.

DESCRIPTION OF CORNER EVIDENCE FOUND

I set the corner at the proportioned offset from the existing East 1/4 of Section 25. Verified this location using EDM & GPS methods.

DESCRIPTION OF CORNER AND WITNESS MONUMENTS, references and accessories used to perpetuate the original or re-established location of this corner. Witnesses to corner location Bobby Sedgwick & Shane Austin & Brad Digman

SKETCH:



AUSTIN ENGINEERING, LLC
 4211 HWY 81 EAST, LANCASTER, WI 53813
 PHONE 608-723-6363 FAX 608-723-6702

FIELDBOOK: TDSR, 2218
 G: \T6NR3W\30A
 H: \TIE\T6NR3W\94
 JOB NUMBER 03S195

DRAWN BY: SW AUSTIN
 APPROVED: LL AUSTIN

CORNER NUMBER 94