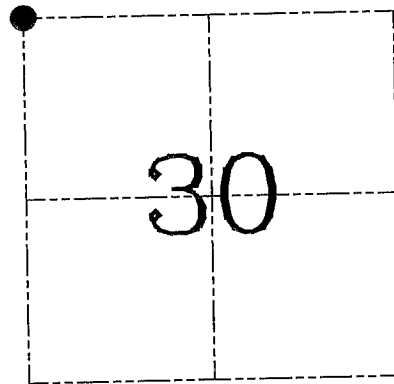


U.S. PUBLIC LAND SURVEY MONUMENT RECORD – GRANT COUNTY, WI
Section 30, Town 6 North Range 3 West, Town of Mount Ida

CERTIFICATE

I, Larry L. Austin, do hereby certify that the corner location on this record was determined by me and/or under my direct supervision and that this U.S. public land survey monument record is correct and complete to the best of my knowledge and belief.

Dated this 8th day of July, 2003



● = CORNER LOCATION

HISTORY OF CORNER ESTABLISHMENT

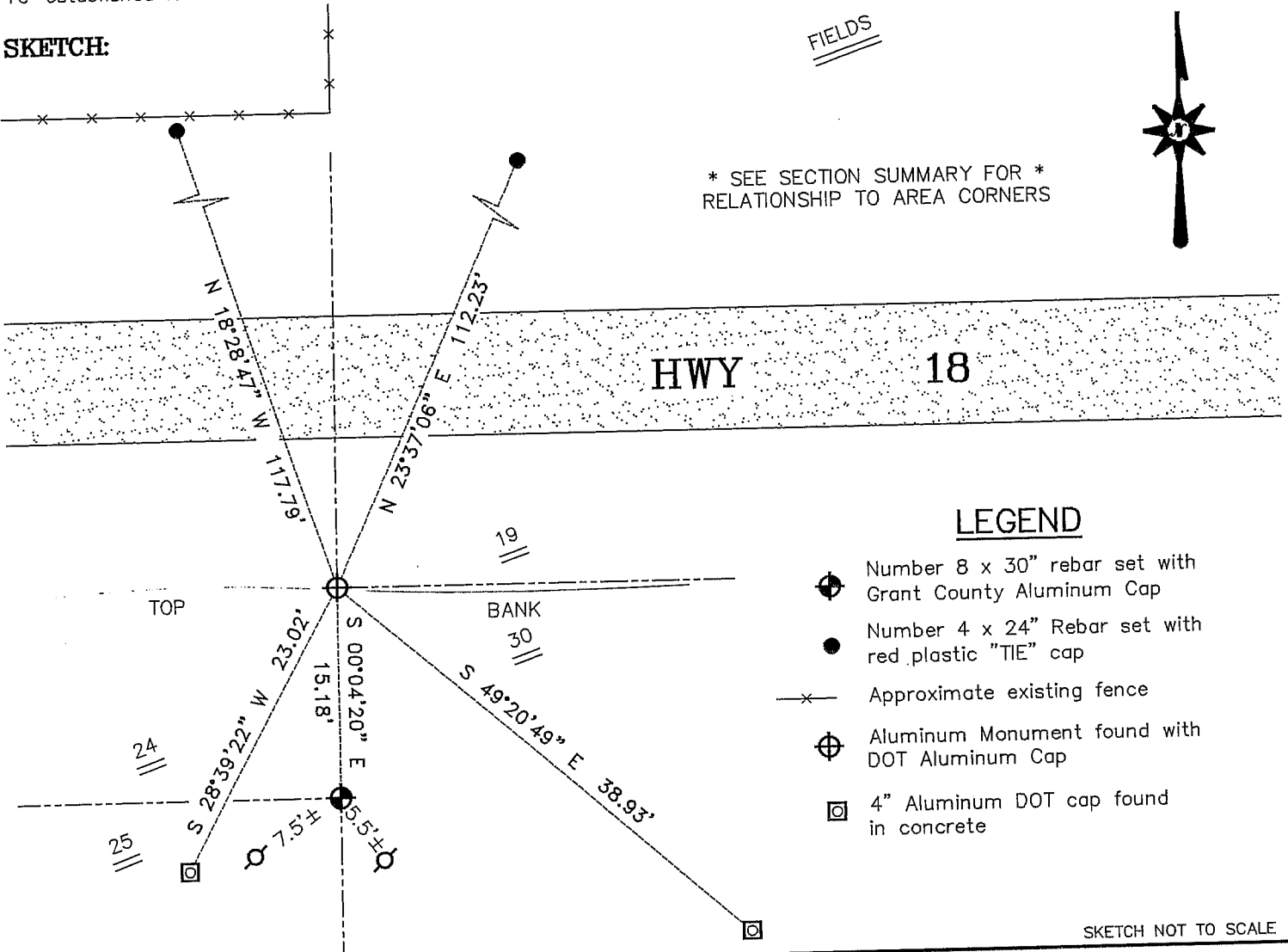
Corner was originally set in 1833 by Parke.
 In 1992 Halverson set an aluminum monument at the corner.

DESCRIPTION OF CORNER EVIDENCE FOUND

I found the existing aluminum monument and set new ties. All preexisting ties were lost during road construction. Verified this location using EDM & GPS methods.

DESCRIPTION OF CORNER AND WITNESS MONUMENTS, references and accessories used to perpetuate the original or re-established location of this corner. Witnesses to corner location Bobby Sedgwick & Shane Austin & Brad Digman

SKETCH:



FIELDS

* SEE SECTION SUMMARY FOR *
 RELATIONSHIP TO AREA CORNERS



LEGEND

- Number 8 x 30" rebar set with Grant County Aluminum Cap
- Number 4 x 24" Rebar set with red plastic "TIE" cap
- × Approximate existing fence
- ⊕ Aluminum Monument found with DOT Aluminum Cap
- ⊠ 4" Aluminum DOT cap found in concrete

SKETCH NOT TO SCALE

AUSTIN ENGINEERING, LLC

4211 HWY 81 EAST, LANCASTER, WI 53813
 PHONE 608-723-6363 FAX 608-723-6702

FIELDBOOK: TDS RNGR, 2218
 G: \T6NR3W\30A
 H: \TIE\T6NR3W\93
 JOB NUMBER 03S195

DRAWN BY: SW AUSTIN
 APPROVED: LL AUSTIN

CORNER NUMBER 93

SEP 27 U. S. PUBLIC LAND SURVEY MONUMENT RECORD

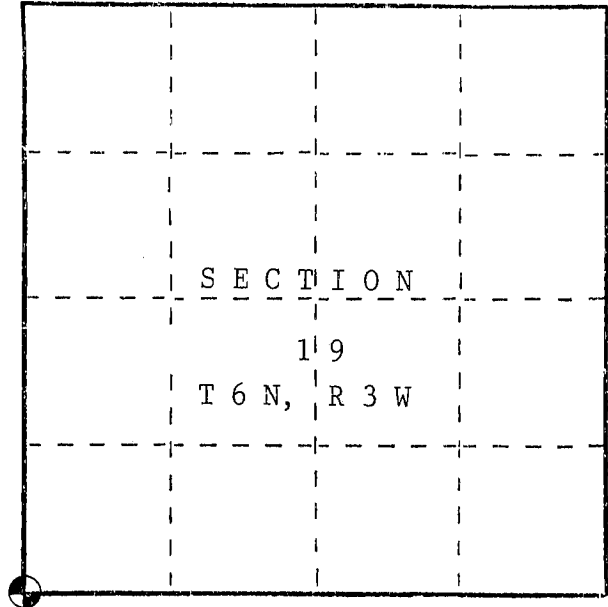
INSTRUCTIONS: This record shall show the location of the corner and shall include all of the following nine elements (a through i).

(a) Identify the corner by reference to the U.S. public land survey system.

○ = Corner monument restored.

Southwest corner of Section 19,
Town 6 North, Range 3 West, Town of
Mt. Ida, Grant County, WI

Set aluminum monument (DOT)



(b) Describe any record evidence, monument evidence, occupational evidence, testimonial evidence or any other material evidence you considered, and whether the monument was found or placed.

There is no record of this corner since the original government survey. I set this corner the recorded government distance from the Southeast corner of Section 24, Town 6 North, Range 4 West.

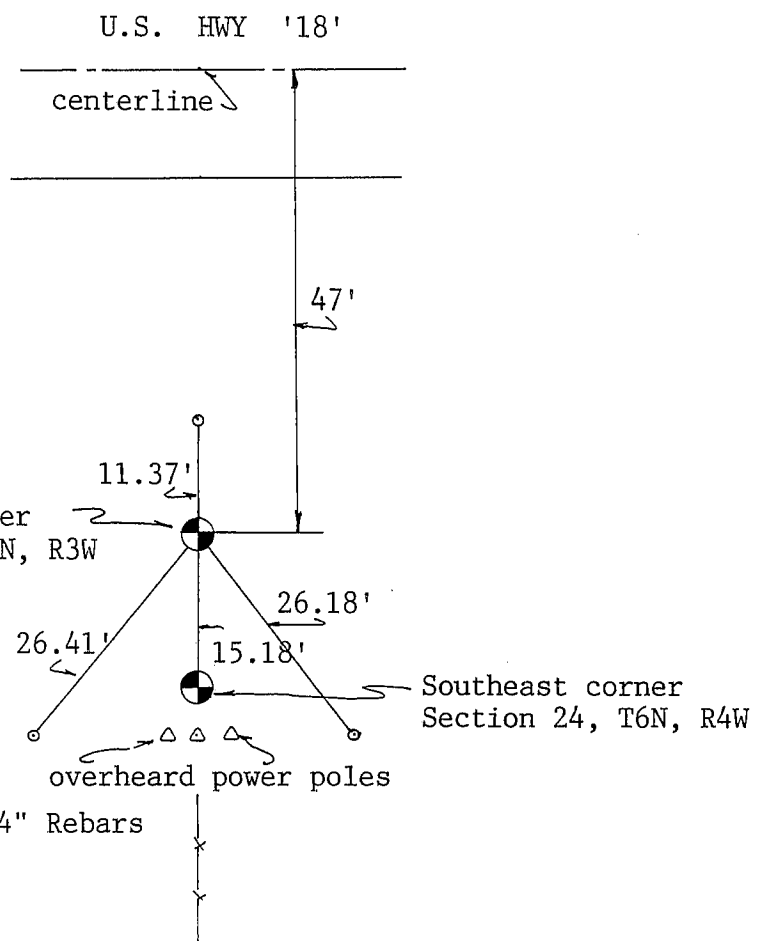
(c) In the plan view drawing below, provide reference ties to at least 4 witness monuments, or, if the location is within a municipality, to at least 2 witness monuments. (Witness monuments shall be made of concrete, natural stone, iron or other equally durable material.) Describe witness monuments.

(d) Show a plan view drawing depicting the relevant monuments and reference ties which is sufficient in detail to enable accurate relocation of the corner monument if the corner monument is disturbed. Indicate north.

Scale 1"=20'

● Set aluminum monument

○ Reference ties are 3/4" x 24" Rebars

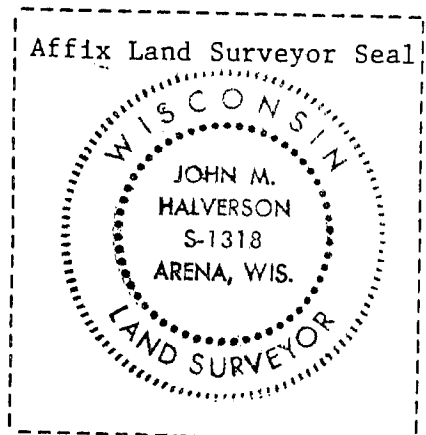
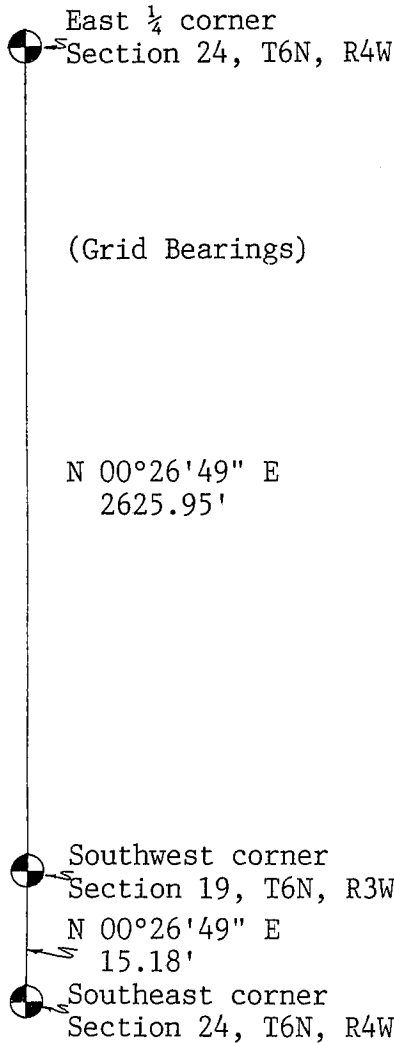


(e) Describe any material discrepancy between the location of the corner as restored or reestablished and the location of that corner as previously restored or reestablished by distance and direction. Show the discrepancy on the plan view drawing under (d), above. Show the distances between the corner as previously restored or reestablished and (1) the corner as restored or reestablished, and (2) to at least 2 of the witness monuments shown on the drawing in (d), above.

(f) Was the corner restored through acceptance of (1) an obliterated evidence location, or, (2) a found perpetuated location?

(g&h) Was the corner reestablished through lost corner proportionate methods? If so, show the method, including the directions and distances to other public land survey corners used as evidence or used for proportioning in determining the corner location?

Yes.



(i) I, John M. Halverson
(type or print name) certify that the corner location shown on this record was determined by me or under my direction and control and that this U.S. Public Land Survey Monument Record is correct and complete to the best of my knowledge and belief.

John M. Halverson
Signature

11/13/92
Date