

U.S. PUBLIC LAND SURVEY MONUMENT RECORD - GRANT COUNTY, WI

Section 21, Town 6 North Range 3 West, Town of Mount Ida (a)

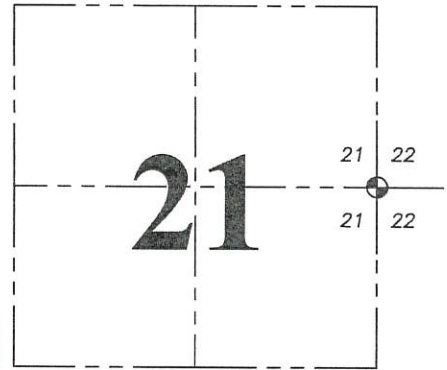
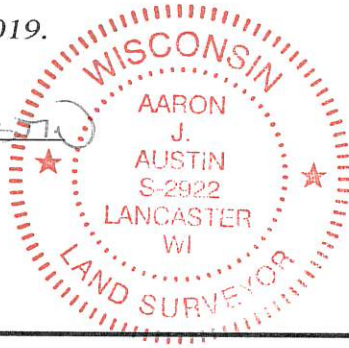
NOTE: This form is intended and designed to fulfill all requirements of the Wisconsin Administrative Code Chapter A-E 7.08, U.S. Public Land Survey Monument Record (3) (a) (b) (c) (d) (e) (f) (g) (h) (i).

CERTIFICATE: (i)

I, Aaron J. Austin, Wisconsin Professional Land Surveyor, do hereby certify that the corner location on this record was determined by me and/or under my direct supervision and that this U.S. Public Land Survey Monument Record is correct and complete to the best of my knowledge and belief.

Dated this 4th day of January, 2019.

Aaron J. Austin
Aaron J. Austin, S-2922



⊕ = CORNER LOCATION

Grant County Coordinates:
NAD 83 (2011)
Northing: 572,183.66
Easting: 815,068.91

HISTORY OF CORNER ESTABLISHMENT:

Harvey Parke set the original corner in 1833.
Matthew Janiak set a 3/4" rebar at this corner and prepared a Government Corner Record dated 3-22-1990.

DESCRIPTION OF CORNER EVIDENCE FOUND: (b) (f) (g) (h)

I found the 3/4" rebar as set by Janiak. I established four witness corners after I verified the monument's location with E.D.M. and G.P.S. methods.

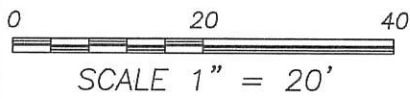
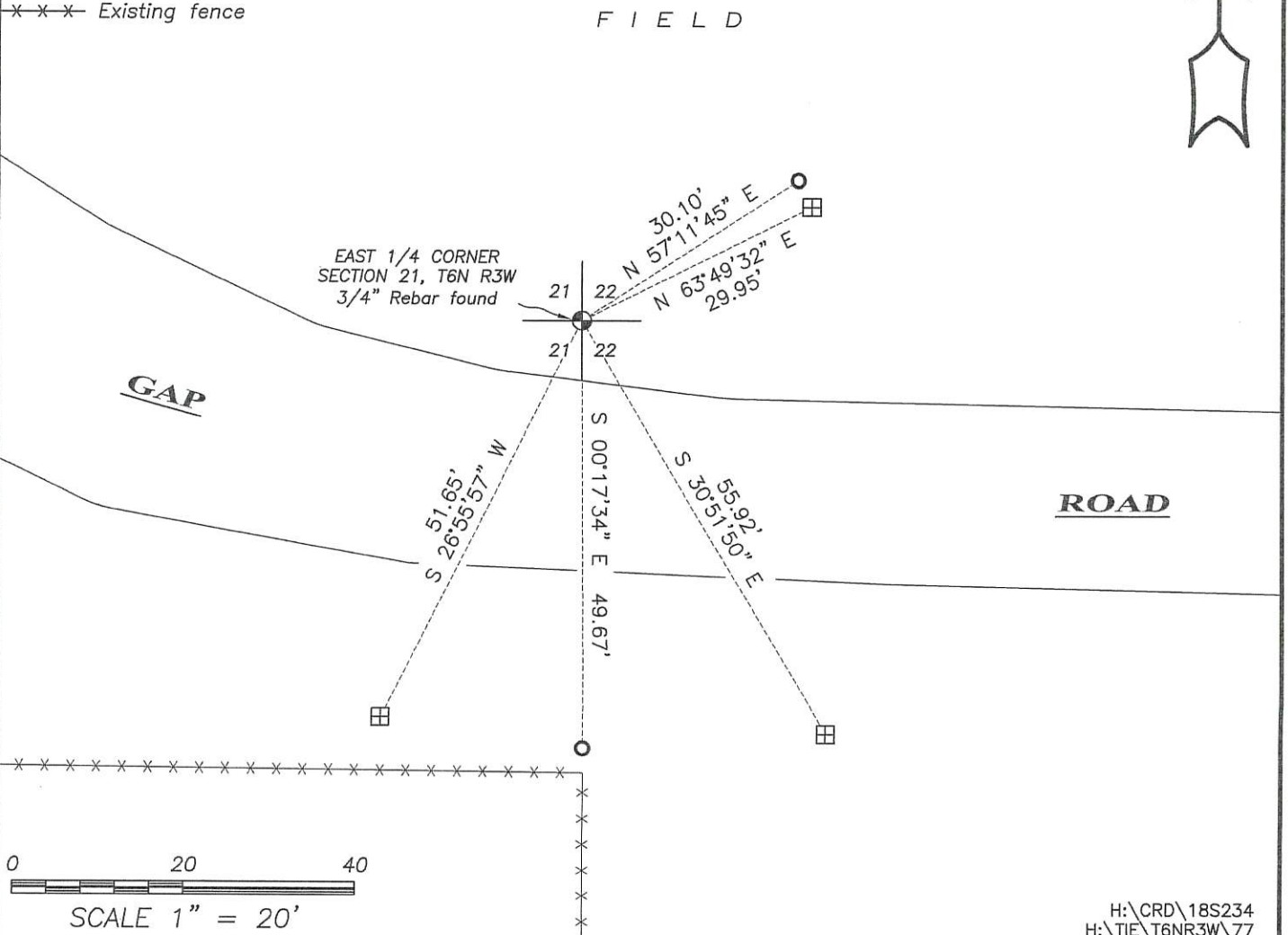
DESCRIPTION OF CORNER AND WITNESS MONUMENTS, references and accessories used to perpetuate the original or re-established location of this corner. (c) (d) (e)

Witnesses to corner location Shane Austin, Owen Austin. Drawn by Owen Austin.

SKETCH:

LEGEND

- ⊕ Section Corner—as designated
- 3/4" rebar found
- ⊞ D.O.T. Aluminum Monument found
- ××× Existing fence



APR 16 1990

GRANT COUNTY GOVERNMENT CORNER RECORD

W. 1/4 CORNER, SECTION 22, TOWNSHIP 6 NORTH, RANGE 3W
TOWN, CITY OR VILLAGE OF MOUNT IDA

TYPE OF MONUMENT: 3/4" X 24" IRON ROD ELEVATION-M.S.L. DATUM _____

STATE PLANE COORDINATES: N _____

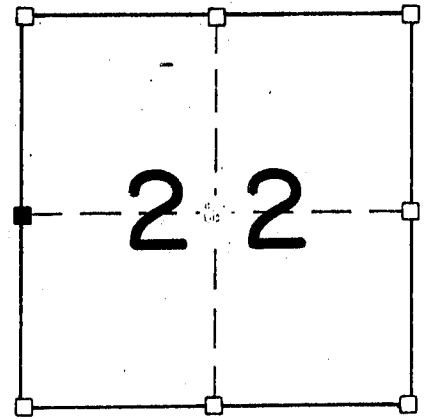
WISCONSIN SOUTH ZONE E _____

WITNESSES TO CORNER LOCATION

SEAN M. WALSH

PATRICK J. DEDERICH

SECTION 22, T. 6 N, R. 3 W
TOWN OF MOUNT IDA

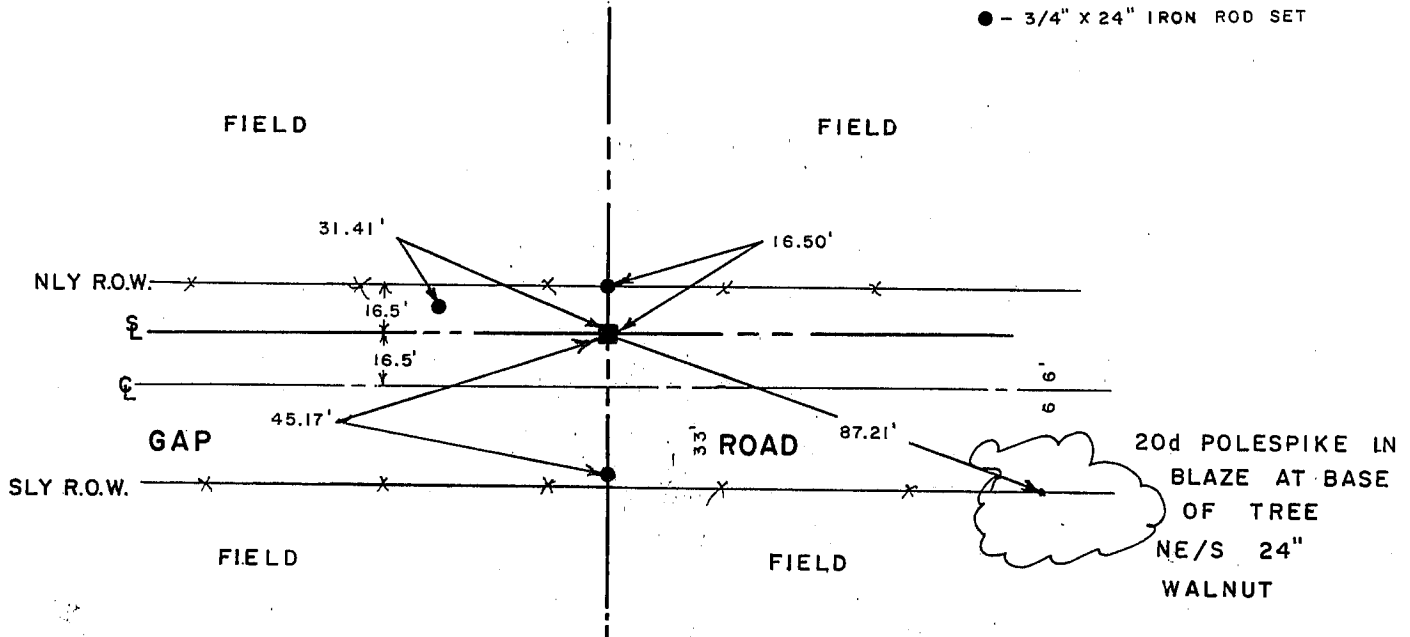


■ - CORNER LOCATION

● - 3/4" X 24" IRON ROD SET

NORTH

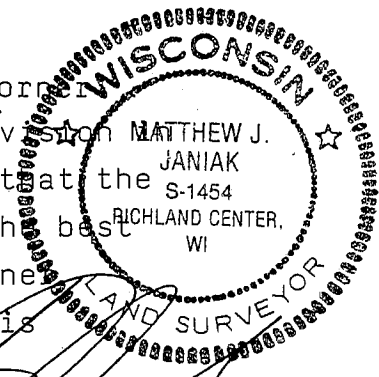
TIE SKETCH
(SHOW ALL HELPFUL FEATURES)



SURVEYOR'S CERTIFICATE
STATE OF WISCONSIN)
COUNTY) SS

SEAL S-1454

I, Matthew J. Janiak, DO HEREBY CERTIFY THAT the above corner
has been established under my direction and supervision
accordance with the information shown hereon and that the
information shown hereon is correct and true to the best
of my information, knowledge and belief. this corner
has been established at the occupied location, this



DATED THIS 22nd DAY OF April, 19 90

Matthew J. Janiak
REGISTERED LAND SURVEYOR

CORNER CODE

(OVER)

location fits very well with the other corners of the Northwest
One-quarter of Section 22.