

63069

U.S. PUBLIC LAND SURVEY MONUMENT RECORD - GRANT COUNTY, WI

Section 20, Town 6 North Range 3 West, Town of Mount Ida (a)

NOTE: This form is intended and designed to fulfill all requirements of the Wisconsin Administrative Code Chapter A-E 7.08, U.S. Public Land Survey Monument Record (3) (a) (b) (c) (d) (e) (f) (g) (h) (i).

CERTIFICATE: (i)

I, Aaron J. Austin, Wisconsin Professional Land Surveyor, do hereby certify that the corner location on this record was determined by me and/or under my direct supervision and that this U.S. Public Land Survey Monument Record is correct and complete to the best of my knowledge and belief.

Dated this 11th day of February, 2026.

Aaron J Austin
Aaron J. Austin, PLS-2922



⊕ = CORNER LOCATION

Grant County Coordinates:
NAD 83 (2011)
Northing: 574,852.07
Easting: 809,766.74

HISTORY OF CORNER ESTABLISHMENT:

Original corner was set in 1833 by Harvey Parke.
Larry Austin set a 3/4" Rebar and prepared a Survey Monument Record dated 2-2-1996.

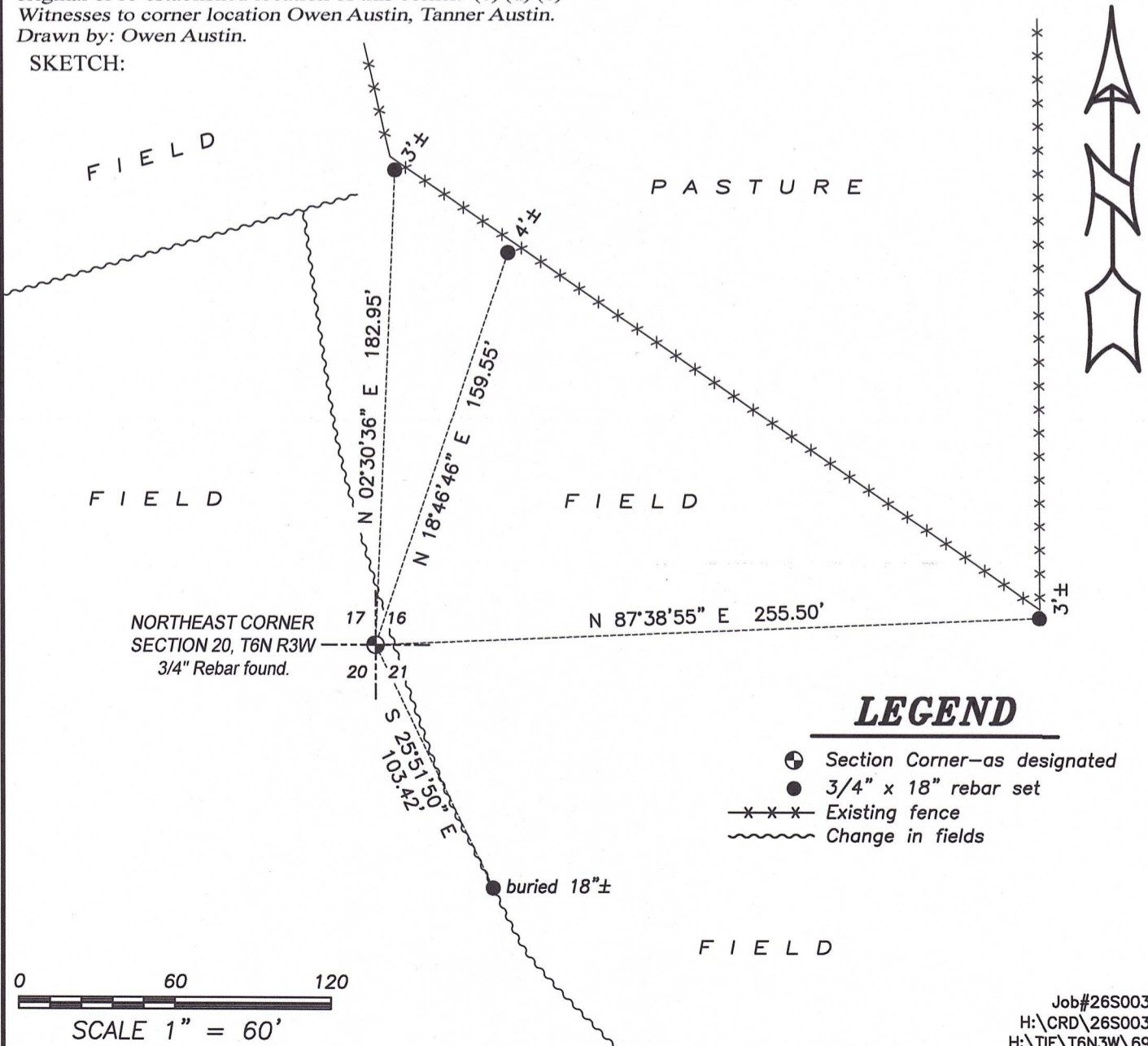
DESCRIPTION OF CORNER EVIDENCE FOUND: (b) (f) (g) (h)

I found the 3/4" Rebar Larry set. I set four witness corners and verified the Monument's location with G.P.S. and E.D.M. methods.

DESCRIPTION OF CORNER AND WITNESS MONUMENTS: references and accessories used to perpetuate the original or re-established location of this corner. (c) (d) (e)

Witnesses to corner location Owen Austin, Tanner Austin.
Drawn by: Owen Austin.

SKETCH:



LEGEND

- ⊕ Section Corner—as designated
- 3/4" x 18" rebar set
- x-x-x- Existing fence
- ~~~~~ Change in fields

Survey Monument Record

TYPE OF MONUMENT 3/4" x 24" IRON BAR SET

STATE PLANE COORDINATES: N _____
E _____

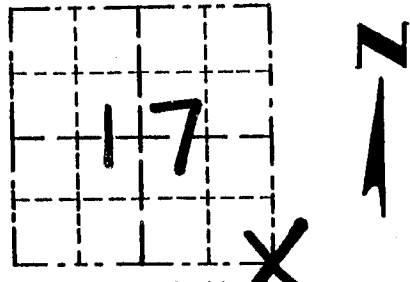
ELEVATION — M.S.L. DATUM: _____

THETA ANGLE: _____

FIELD BOOK: 95-11

PAGE 29

CORNER NO. 69
SECTION 17
TOWN 6N
RANGE 3W



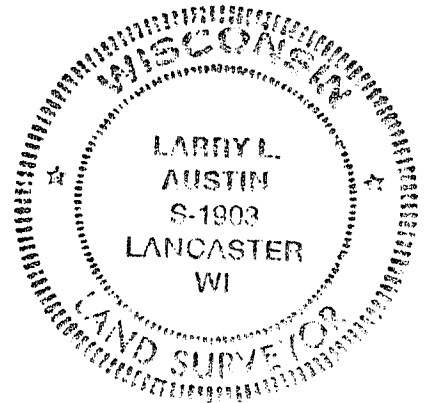
LOCATION
(Indicated by "X")

BASIS FOR MONUMENT LOCATION

(Use reverse side if necessary)

- ORIGINAL CORNER SET
IN 1833 BY HARVEY PARKE.

SEAL:



- LOCATION OF CORNER
ESTABLISHED BY PROPORTIONATE
MEASUREMENTS TO THE SE CORNER
OF SECTION 20 AND THE EAST 1/4
CORNER SECTION 17 & VERIFIED BY
EDM TRAVERSE OF AREA.

CERTIFIED CORRECT

Larry L. Austin
Registered Land Surveyor

DATE: 2/2/96

TIE SKETCH

Show at least three (3) ties and monument

LEGEND

● 3/4" x 24" IRON BAR SET

○ 1" x 12" IRON PIPE SET

— — — EXISTING FENCE

