

63060

# U.S. PUBLIC LAND SURVEY MONUMENT RECORD - GRANT COUNTY, WI

Section 15, Town 6 North Range 3 West, Town of Mount Ida (a)

NOTE: This form is intended and designed to fulfill all requirements of the Wisconsin Administrative Code Chapter A-E 7.08, U.S. Public Land Survey Monument Record (3) (a) (b) (c) (d) (e) (f) (g) (h) (i).

### CERTIFICATE: (i)

I, Aaron J. Austin, Wisconsin Professional Land Surveyor, do hereby certify that the corner location on this record was determined by me and/or under my direct supervision and that this U.S. Public Land Survey Monument Record is correct and complete to the best of my knowledge and belief.

Dated this 31st day of January, 2023.

*Aaron J. Austin*  
Aaron J. Austin, S-2922



⊕ = CORNER LOCATION

Grant County Coordinates:  
NAD 83 (2011)  
Northing: 574,800.37  
Easting: 817,683.76

### HISTORY OF CORNER ESTABLISHMENT:

Original corner was set in 1833 by Harvey Parke.  
Mathew Janiak set a 3/4" Rebar and prepared a Survey Monument Record dated 3/22/1990.

### DESCRIPTION OF CORNER EVIDENCE FOUND: (b) (f) (g) (h)

I found the 3/4" Rebar and three witness corners Janiak set. I set one additional witness corner after I verified the Monument's location with G.P.S. and E.D.M. methods.

### DESCRIPTION OF CORNER AND WITNESS MONUMENTS, references and accessories used to perpetuate the original or re-established location of this corner. (c) (d) (e)

Witnesses to corner location Owen Austin, Tanner Austin.  
Drawn by: Owen Austin

SKETCH:

### LEGEND

- ⊕ Section Corner—as designated
- 3/4" rebar found
- 3/4" x 18" rebar set
- ⊕ Existing utility pole
- x-x-x- Existing fence



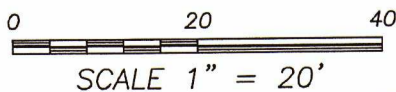
Y A R D

ROAD

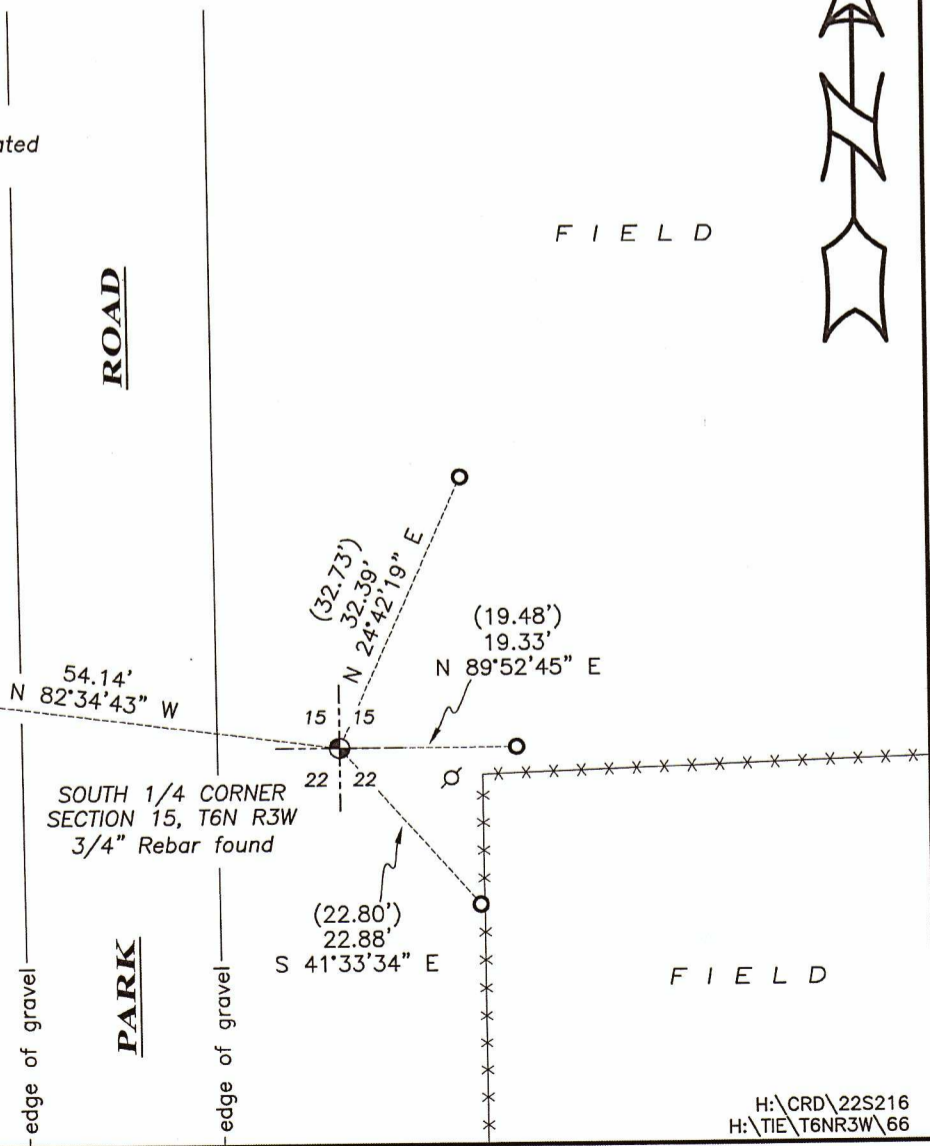
PARK

F I E L D

F I E L D



SCALE 1" = 20'



SOUTH 1/4 CORNER  
SECTION 15, T6N R3W  
3/4" Rebar found

APR 16

# GRANT COUNTY GOVERNMENT CORNER RECORD

N 1/4 CORNER, SECTION 22, TOWNSHIP 6 NORTH, RANGE 3 W  
TOWN, CITY OR VILLAGE OF MOUNT IDA

TYPE OF MONUMENT: 3/4" X 24" IRON ROD ELEVATION-M.S.L. DATUM

STATE PLANE COORDINATES: N

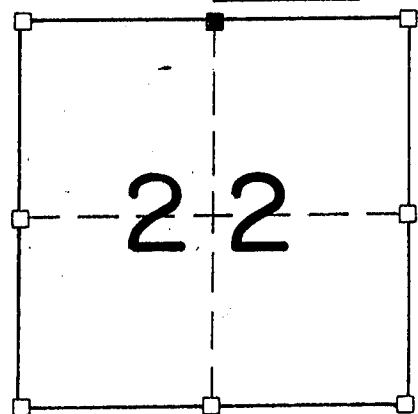
WISCONSIN SOUTH ZONE E

WITNESSES TO CORNER LOCATION

SEAN M. WALSH

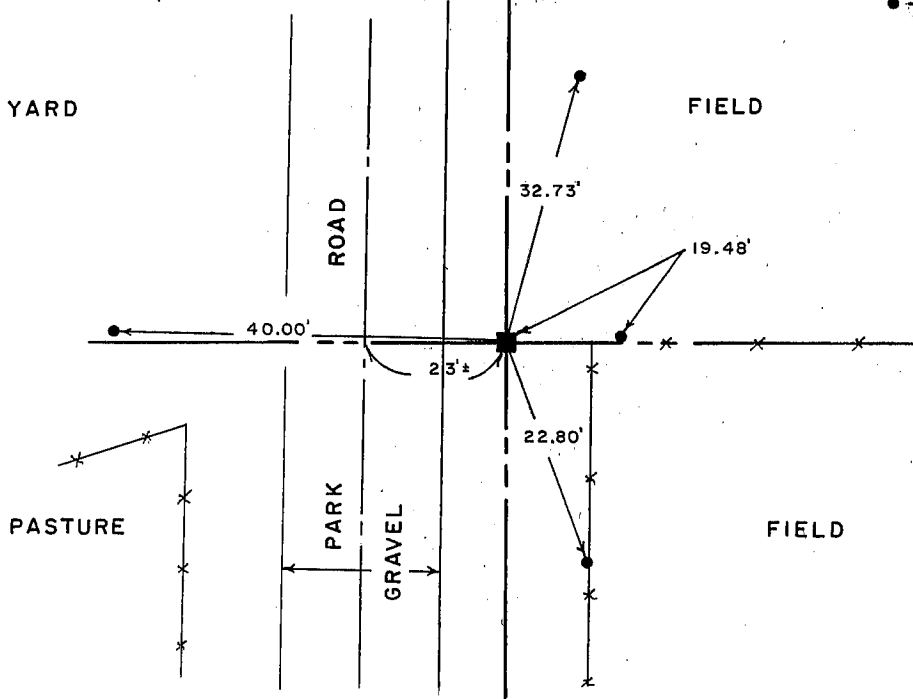
PATRICK J. DEDERICH

SECTION 22, T 6 N, R 3 W  
TOWN OF MOUNT IDA



NORTH

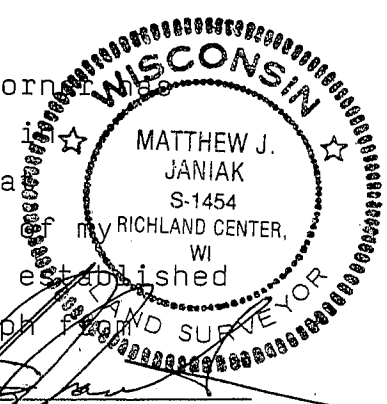
TIE SKETCH  
(SHOW ALL HELPFUL FEATURES)



SURVEYOR'S CERTIFICATE  
STATE OF WISCONSIN )  
COUNTY ) SS

SEAL S-1454

I, Matthew J. Janiak, DO HEREBY CERTIFY THAT the above corner  
been established under my direction and supervision in  
accordance with the information shown hereon and that  
the information shown hereon is correct to the best  
information, knowledge and belief. this corner was established  
through the retracement of a survey by Homer D. Ralph  
July of 1974, this location works



DATED THIS 22ND DAY OF March, 1974

REGISTERED LAND SURVEYOR

CORNER CODE

( OVER )

66

very well with the location of the other corners of the Northwest  
one-quarter of Section 22.