

63056

U.S. PUBLIC LAND SURVEY MONUMENT RECORD - GRANT COUNTY, WI

Section 16, Town 6 North Range 3 West, Town of Mount Ida (a)

NOTE: This form is intended and designed to fulfill all requirements of the Wisconsin Administrative Code Chapter A-E 7.08, U.S. Public Land Survey Monument Record (3) (a) (b) (c) (d) (e) (f) (g) (h) (i).

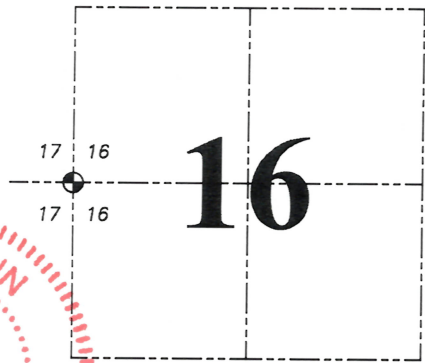
CERTIFICATE: (i)

I, Aaron J. Austin, Wisconsin Professional Land Surveyor, do hereby certify that the corner location on this record was determined by me and/or under my direct supervision and that this U.S. Public Land Survey Monument Record is correct and complete to the best of my knowledge and belief.

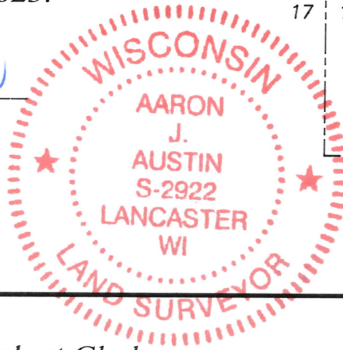
Dated this 7th day of September, 2023.

Aaron J Austin

Aaron J. Austin, S-2922



Grant County Coordinates:
NAD 83 (2011)
Northing: 577,502.00
Easting: 809,731.58



⊙ = CORNER LOCATION

HISTORY OF CORNER ESTABLISHMENT:

Original corner was set in 1833 by Robert Clark.
Larry Austin found 1" Rebar and prepared a Survey Monument Record dated 2-2-1996.

DESCRIPTION OF CORNER EVIDENCE FOUND: (b) (f) (g) (h)

I found a 1" Rebar. I set four witness corners after I verified the Monument's location with G.P.S. and E.D.M. methods.

DESCRIPTION OF CORNER AND WITNESS MONUMENTS: references and accessories used to perpetuate the original or re-established location of this corner. (c) (d) (e)

Witnesses to corner location Shane Austin, Tanner Austin.
Drawn by: Owen Austin.

SKETCH:

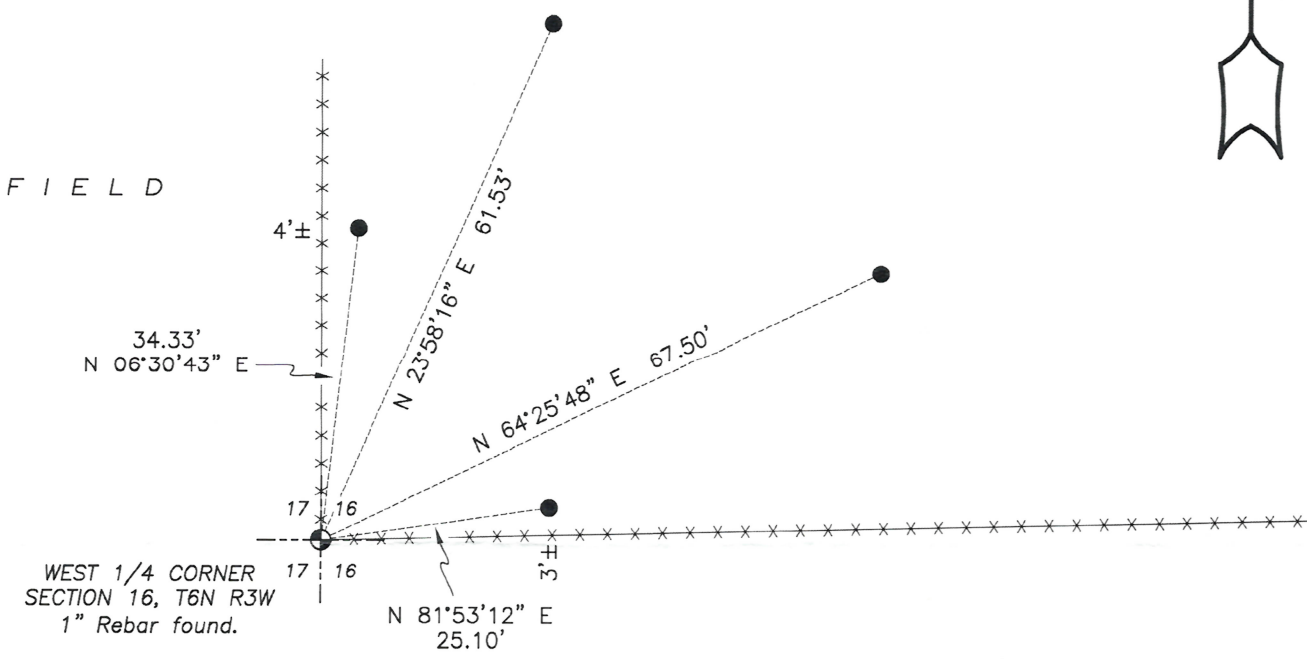
LEGEND

- ⊙ Section Corner—as designated
- 3/4" x 18" rebar set
- x-x-x- Existing fence

PASTURE

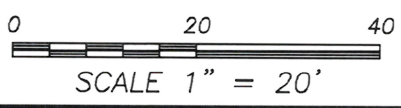


FIELD



WEST 1/4 CORNER SECTION 16, T6N R3W
1" Rebar found.

FIELD



REC'D MAR 8 1995

Survey Monument Record

TYPE OF MONUMENT 1" IRON BAR FOUND

STATE PLANE COORDINATES: N _____
E _____

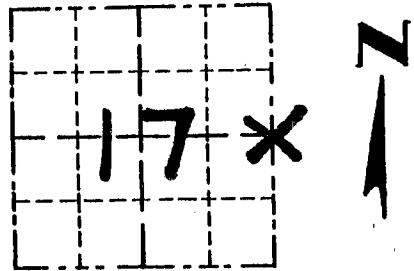
ELEVATION — M.S.L. DATUM: _____

THETA ANGLE: _____

FIELD BOOK: 95-11

PAGE 29

CORNER NO. 56
SECTION 17
TOWN 6N
RANGE 3W

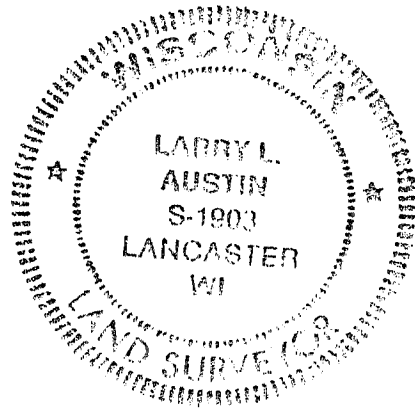


LOCATION
(Indicated by "X")

BASIS FOR MONUMENT LOCATION

(Use reverse side if necessary)

- ORIGINAL CORNER SET IN 1833 BY HARVEY PARKE.
- FOUND A 1" BAR AT AN ^{SEAL:} OCCUPATION EVIDENCE LOCATION
- I ACCEPTED THIS LOCATION AFTER VERIFICATION BY EDM TRAVERSE OF THE AREA.



CERTIFIED CORRECT

Larry L. Austin
Registered Land Surveyor

DATE: 2/2/96

TIE SKETCH

Show at least three (3) ties and monument

