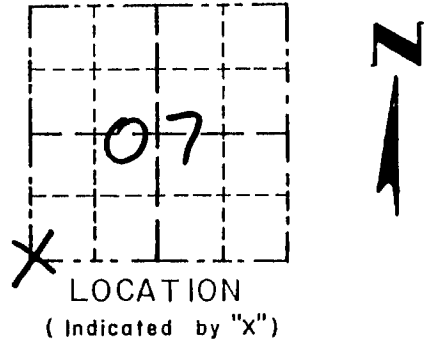


Survey Monument Record

TYPE OF MONUMENT 3/4" X 24" IRON BAR SET AT CORNER

CORNER NO. 53
 SECTION 07
 TOWN 6N
 RANGE 3W

FIELD BOOK: 97-10
 PAGE (2)



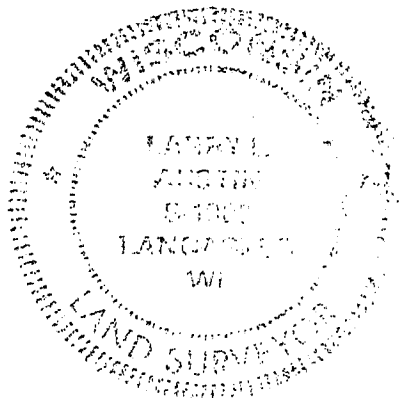
BASIS FOR MONUMENT LOCATION

(Use reverse side if necessary)

Show info such as: History of corner, with reference to Vol. and pg., dates, surveyor; exact description of monument replaced; if location computed, by taped or EDM traverse; landowner, remarks, etc.

SEAL:

CORNER WAS SET IN 1933 BY HARVEY PARKE. NO RECORD OF CORNER FOUND SINCE ORIGINAL SURVEYS. I SET THE CORNER AT THE RECORDED OFFSET FROM THE SOUTHEAST CORNER OF SECTION 12 T6N R4W. VERIFIED THIS LOCATION USING EDM METHODS.



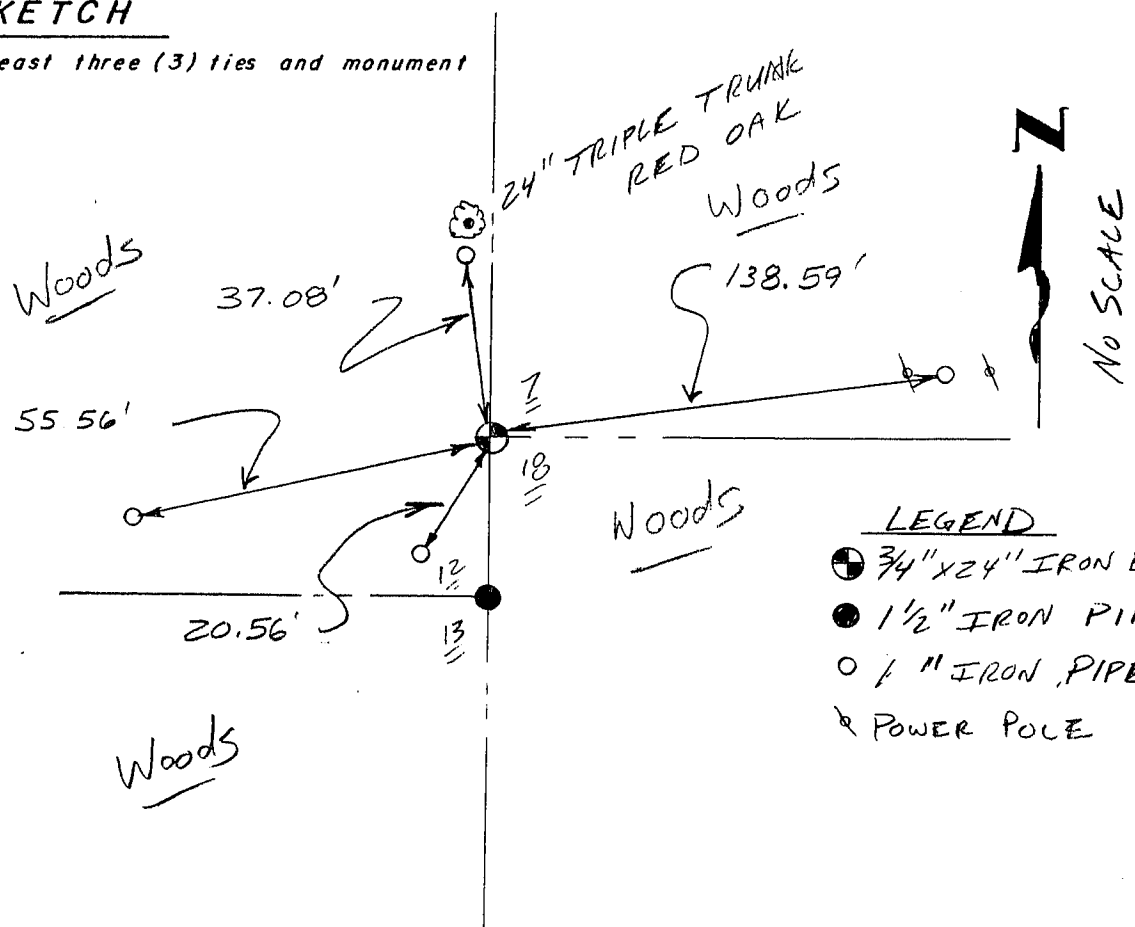
CERTIFIED CORRECT

Larry P. Austin
 Registered Land Surveyor

DATE: 4/10/98

TIE SKETCH

Show at least three (3) ties and monument



- LEGEND
- ⊕ 3/4" X 24" IRON BAR
 - 1/2" IRON PIPE
 - 1" IRON PIPES
 - ⊗ POWER POLE