

03040

U.S. PUBLIC LAND SURVEY MONUMENT RECORD - GRANT COUNTY, WI

Section 15, Town 6 North Range 3 West, Town of Mount Ida (a)

NOTE: This form is intended and designed to fulfill all requirements of the Wisconsin Administrative Code Chapter A-E 7.08, U.S. Public Land Survey Monument Record (3) (a) (b) (c) (d) (e) (f) (g) (h) (i).

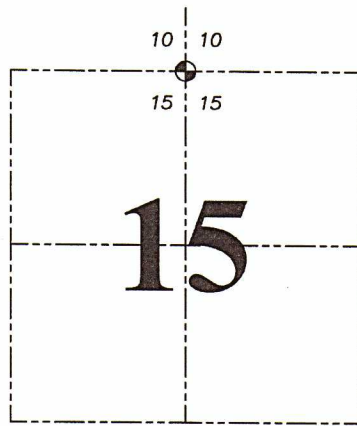
CERTIFICATE: (i)

I, Aaron J. Austin, Wisconsin Professional Land Surveyor, do hereby certify that the corner location on this record was determined by me and/or under my direct supervision and that this U.S. Public Land Survey Monument Record is correct and complete to the best of my knowledge and belief.

Dated this 31st day of January, 2023.

Aaron J Austin

Aaron J. Austin, S-2922



⊕ = CORNER LOCATION

Grant County Coordinates:
NAD 83 (2011)
Northing: 580,094.71
Easting: 817,618.29

HISTORY OF CORNER ESTABLISHMENT:

Original corner was set in 1833 by Harvey Parke.
No other record found for this corner being set was found.

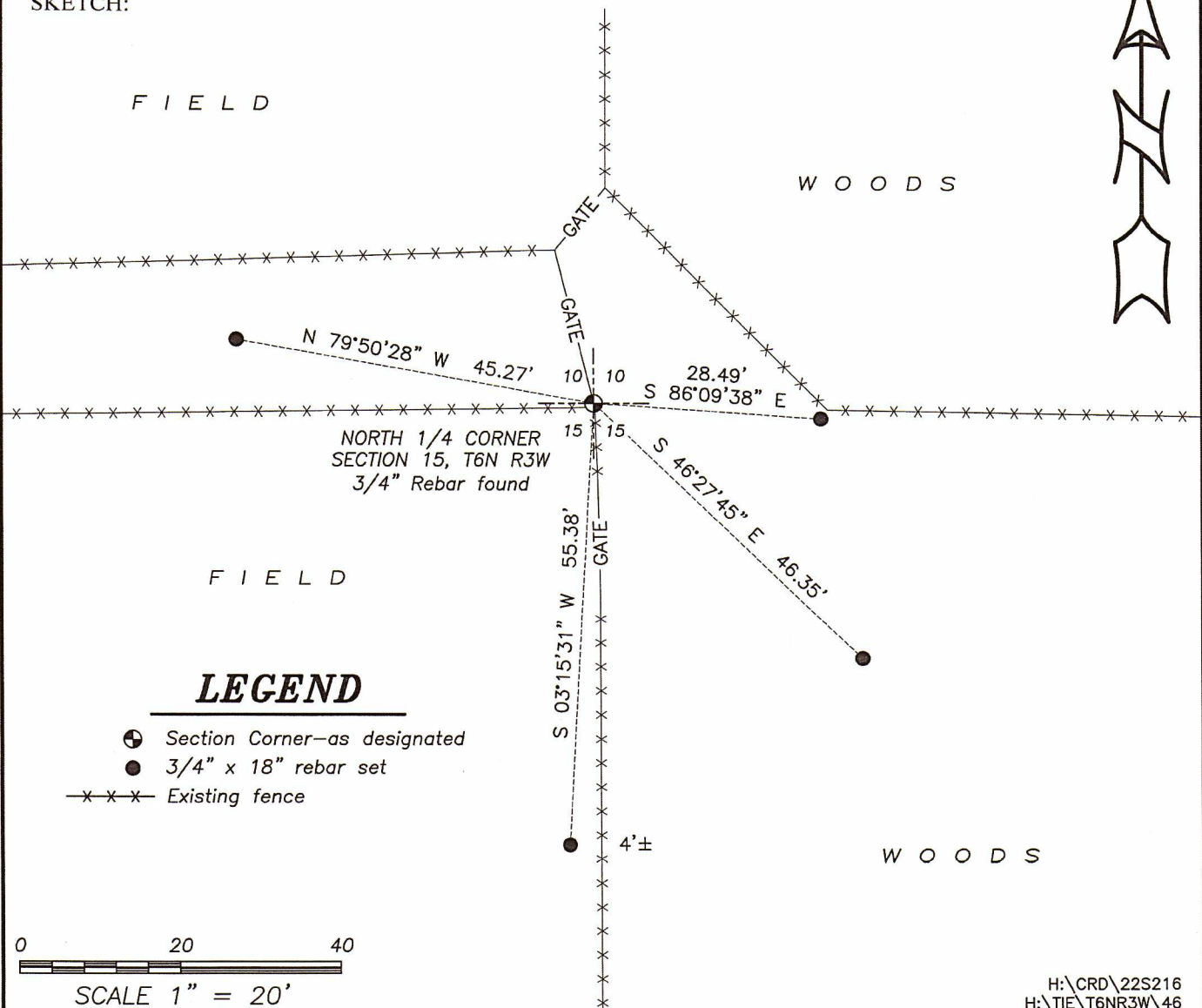
DESCRIPTION OF CORNER EVIDENCE FOUND: (b) (f) (g) (h)

I found and accepted a 3/4" Rebar at a fence corner. This Rebar was utilized on a previous Survey by Larry Austin dated 5/22/1992 filed in Book 27, Page 36. I set four witness corners after I verified the Monument's location with G.P.S. and E.D.M. methods.

DESCRIPTION OF CORNER AND WITNESS MONUMENTS, references and accessories used to perpetuate the original or re-established location of this corner. (c) (d) (e)

Witnesses to corner location Owen Austin, Tanner Austin.
Drawn by: Owen Austin

SKETCH:



LEGEND

- ⊕ Section Corner—as designated
- 3/4" x 18" rebar set
- x-x-x- Existing fence

